

## The Camrose The Willows, Olchfa Sketty, Swansea, SA2 8NW

An opportunity to live in an exceptional home in the heart of Sketty which is one of the most sought-after suburbs of Swansea. Built on land once forming part of the high achieving Olchfa Comprehensive School and with its very own primary school a stones' throw away, families of all ages will be well served. The Willows is a highly desirable place to live for all, suitably placed for families and young professionals.

The Camrose, At the heart of this charming yet resolutely modern three-bedroom home is an open plan kitchen and dining area with stunning French doors that lead onto a beautifully landscaped rear garden. With space and functionality firmly in mind, this home offers a spacious lounge that will be the perfect setting for entertaining guests. Upstairs hosts a master bedroom with en-suite and bespoke fully-fitted wardrobes, a double and single bedroom and a family bathroom.

**£349,995**

# The Camrose The Willows, Olchfa

Sketty, Swansea, SA2 8NW



- NHBC 10 Year Warranty
- Master Bedroom with En-Suite
- Contemporary Development
- 3 Bedroom Semi-Detached
- 945 Sq Ft
- Open Plan Kitchen/Dining Room
- High Specification Throughout

## Ground Floor

### Kitchen

9'8" x 10'11" (2.96m x 3.33m)

### Dining

8'0" x 10'11" (2.45m x 3.33m)

### Lounge

10'8" x 14'2" (3.26m x 4.32m)

### WC

2'8" x 6'9" (0.83 x 2.06m)

## First Floor

### Master Bedroom

10'7" x 10'8" (3.24m x 3.26m)

### En-Suite

7'10" x 3'5" (2.41m x 1.05m)

### Bedroom 2

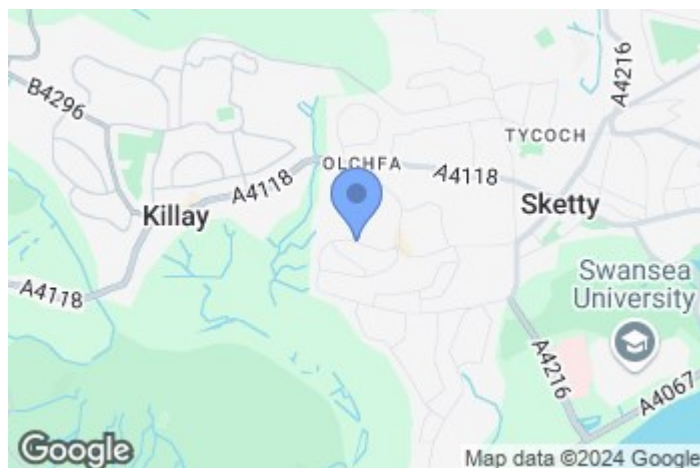
10'8" x 10'7" (3.26m x 3.24m)

### Bedroom 3

6'9" x 7'1" (2.06m x 2.16m)

### Family Bathroom

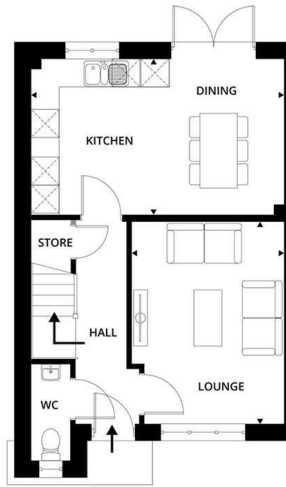
6'3" x 6'9" (1.92m x 2.06m)



Directions



# Floor Plan



These particulars, whilst believed to be accurate are set out as a general outline only for guidance and do not constitute any part of an offer or contract. Intending purchasers should not rely on them as statements of representation of fact, but must satisfy themselves by inspection or otherwise as to their accuracy. No person in this firm's employment has the authority to make or give any representation or warranty in respect of the property.

