

The Usk The Willows, Olchfa Sketty, Swansea, SA2 8NW

* £5,000 WORTH OF INCENTIVES PLUS CONTRIBUTION TOWARDS STAMP DUTY *

An opportunity to live in an exceptional home in the heart of Sketty which is one of the most sought-after suburbs of Swansea. Built on land once forming part of the high achieving Olchfa Comprehensive School and with its very own primary school a stones' throw away, families of all ages will be well served. The Willows is a highly desirable place to live for all, suitably placed for families and young professionals.

£469,995

The Usk The Willows, Olchfa

Sketty, Swansea, SA2 8NW



- NHBC 10 Year Warranty
- Two Bedrooms with En-Suite
- Contemporary Development
- 4 Bedroom Town House
- 1479 Sq Ft
- Open Plan Kitchen/Dining Room
- High Specification Throughout

Ground Floor

Kitchen

16'11" x 10'7" (5.17m x 3.23m)

Dining

8'0" x 14'11" (2.44m x 4.57m)

Lounge

11'2"* x 17'7"* (3.42m* x 5.38m*)

WC

7'1" x 3'1" (2.17m x 0.96m)

First Floor

Bedroom 2

14'2"* x 9'3" (4.33m* x 2.82m)

En-Suite

6'3"* x 7'1"* (1.91m* x 2.17m*)

Bedroom 3

10'7" x 9'7" (3.23m x 2.94m)

Bedroom 4

10'7" x 8'6" (3.23m x 2.61m)

Family Bathroom

6'3" x 7'2" (1.92m x 2.19m)

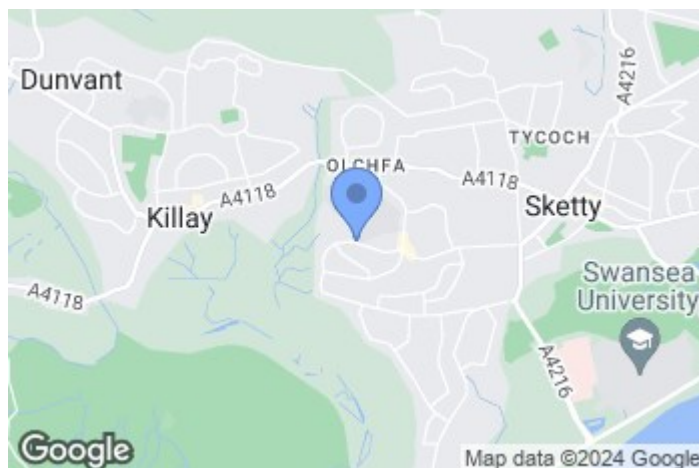
Second Floor

Master Bedroom

14'11"* x 12'9"* (4.56m* x 3.90m*)

En-Suite

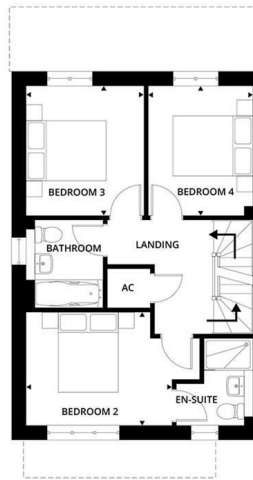
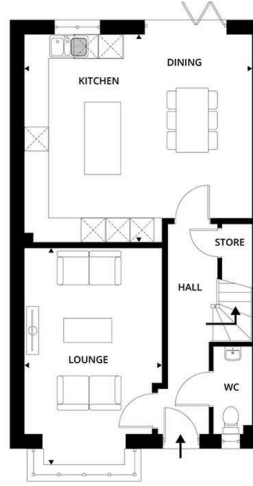
4'9"* x 11'5"* (1.47m* x 3.50m*)



Directions



Floor Plan



These particulars, whilst believed to be accurate are set out as a general outline only for guidance and do not constitute any part of an offer or contract. Intending purchasers should not rely on them as statements of representation of fact, but must satisfy themselves by inspection or otherwise as to their accuracy. No person in this firm's employment has the authority to make or give any representation or warranty in respect of the property.

