

Plot 8, The Oystermouth The Willows, Olchfa Sketty, Swansea, SA2 8NW

An opportunity to live in an exceptional home in the heart of Sketty which is one of the most sought-after suburbs of Swansea. Built on land once forming part of the high achieving Olchfa Comprehensive School and with its very own primary school a stones' throw away, families of all ages will be well served. The Willows is a highly desirable place to live for all, suitably placed for families and young professionals.

The Oystermouth - A beautiful four-bedroom home which feature a contemporary open-plan kitchen, dining and family area. Bi-fold doors featured in a large open space an uninterrupted view of the soft landscaping of the private rear garden. Stunning without compromising on practicality, the Oystermouth hosts a generous lounge with a feature bay window and access into a large integral garage via the hallway. The first floor benefits from a generous master bedroom with an en-suite and a bespoke fully-fitted wardrobes, three further bedroom and a family bathroom.

£489,995

Plot 8, The Oystermouth The Willows, Olchfa

Sketty, Swansea, SA2 8NW



- NHBC 10 Year Warranty
- Master Bedroom with En-Suite
- 1384 Sq Ft
- 4 Bedroom Detached Family Home
- Integral Garage
- High Specification Throughout
- Open Plan Kitchen/Dining/Family Room
- Utility & Ground Floor WC
- Contemporary Development

Ground Floor

WC

5'2" x 3'5" (1.58m x 1.06m)

Lounge

10'4" x 16'10"* (3.15m x 5.14*)

Kitchen

13'7" x 10'4" (4.16m x 3.15m)

Dining

13'9" x 10'4"* (4.20m x 3.15m*)

Utility

6'5" x 5'2" (1.96m x 1.58m)

Garage

19'7" x 9'6" (5.97m x 2.91m)

First Floor

Master Bedroom

10'5" x 18'5"* (3.19m x 5.62m*)

En-Suite

8'8" x 6'4"* (2.66m x 1.94m*)

Bedroom 2

9'10" x 14'3"* (3.00m x 4.35m*)

Bedroom 3

9'2" x 11'10"* (2.80m x 3.63m*)

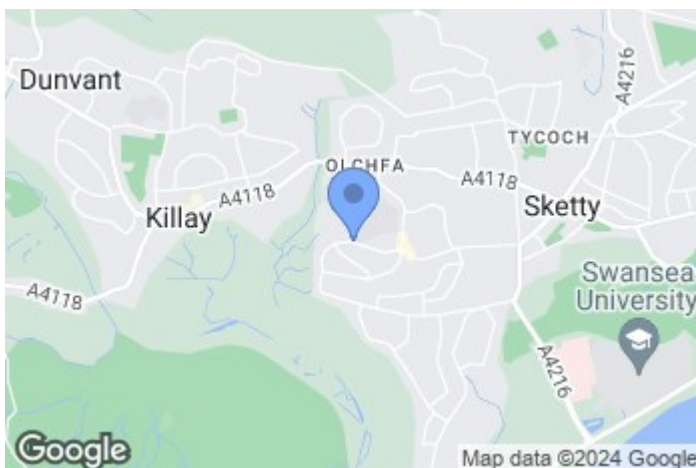
Bedroom 4

9'5"* x 9'2"* (2.88m* x 2.81m*)

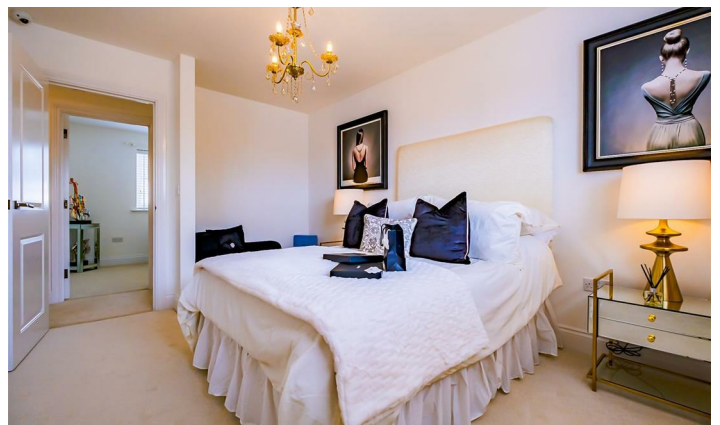
Family Bathroom

8'3"* x 7'9"* (2.52m* x 2.38m*)

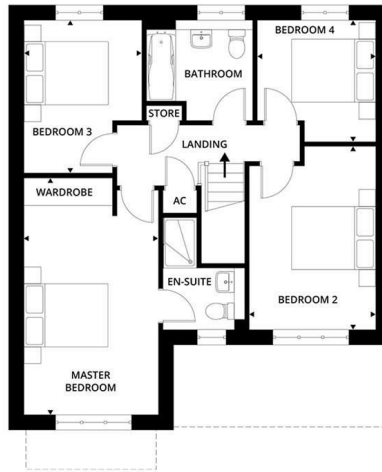
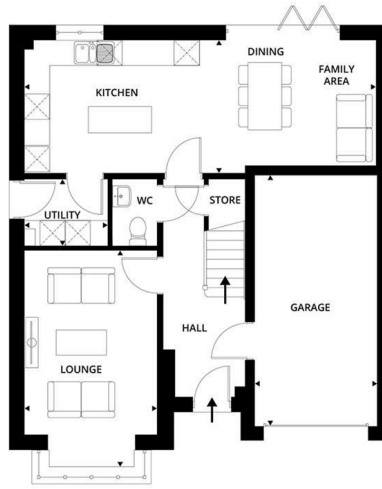
External



Directions



Floor Plan



These particulars, whilst believed to be accurate are set out as a general outline only for guidance and do not constitute any part of an offer or contract. Intending purchasers should not rely on them as statements of representation of fact, but must satisfy themselves by inspection or otherwise as to their accuracy. No person in this firm's employment has the authority to make or give any representation or warranty in respect of the property.

