



13 Parklands Court

Sketty, Swansea, SA2 8LZ

Available for sale on a 70/30 shared ownership with Pobl. A first floor two bedroom retirement apartment, enjoying a popular location with good shopping facilities around which includes post office, supermarket, chemist and with great links and bus routes to the City Centre, Mumbles and Gower. The accommodation briefly comprises, hallway, lounge, kitchen, two bedrooms and shower room. Service charge £40 per week which includes buildings insurance, maintenance of lift, communal areas, gardens, water rates, use of communal laundry and on site manager. EPC Rating - C.

70% Shared ownership £84,000

13 Parklands Court

Sketty, Swansea, SA2 8LZ



- RETIREMENT APARTMENT
- FIRST FLOOR
- LEASEHOLD 60 YEARS
- SHARED OWNERSHIP
- TWO BEDROOM
- COUNCIL TAX BAND C
- 70/30 WITH POBL
- COMMUNAL FACILITIES

The Accommodation Comprises

Hall

Lounge

13'9" x 13'5" (4.20m x 4.08m)

Kitchen

8'4" x 8'1" (2.55m x 2.47m)

Bedroom 1

13'9" x 8'9" (4.20m x 2.67m)

Bedroom 2

9'10" x 10'7" (3.00m x 3.23m)

Shower Room

Communal Facilities

Tenure

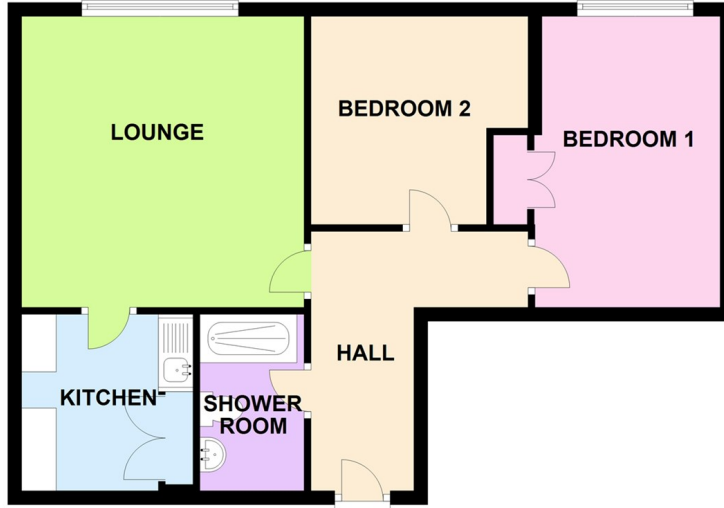


Directions

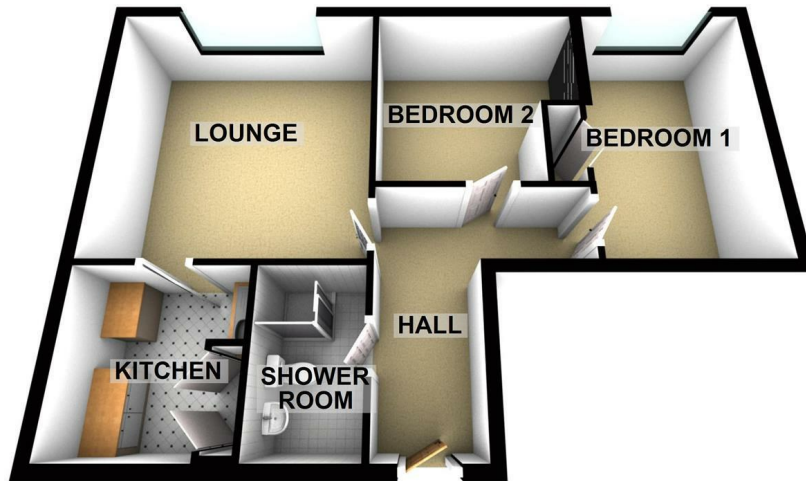


Floor Plan

FLOOR PLAN



FLOOR PLAN



These particulars, whilst believed to be accurate are set out as a general outline only for guidance and do not constitute any part of an offer or contract. Intending purchasers should not rely on them as statements of representation of fact, but must satisfy themselves by inspection or otherwise as to their accuracy. No person in this firm's employment has the authority to make or give any representation or warranty in respect of the property.

