



## 21 Alexandra Terrace, Brynmill, Swansea, SA2 0DU

**£150,000**

CASH BUYERS ONLY. A spacious three bedroom middle terrace property offered for sale with no onward chain. Located in the popular location of Brynmill within walking distance of the vibrant Uplands district and delightful parks including Brynmill and Singleton. Ideally situated for local schools, amenities and easy access to the sea front, Swansea City Centre, Singleton Hospital and University. The accommodation comprises to the ground floor a porch, hall, living room, sitting room, dining room and kitchen. To the first floor you will find three bedrooms and a bathroom. Externally to the front of the property there is a courtyard. To the rear you will find an enclosed garden.

## The Accommodation Comprises

### Ground Floor

#### Porch

Entered via front door.

#### Hall

Staircase leading to the first floor, radiator.

#### Living Room 10'4" x 11'5" (3.14m x 3.48m)



Double glazed bay window to front, fireplace, radiator.

#### Sitting Room 11'1" x 8'11" (3.37m x 2.71m)



Sliding door leading to rear garden, radiator.

#### Dining Room 15'7" x 8'6" (4.74m x 2.60m)



Double glazed window to rear, understairs storage cupboard, radiator.

#### Kitchen 16'8" x 5'7" (5.07m x 1.70m)



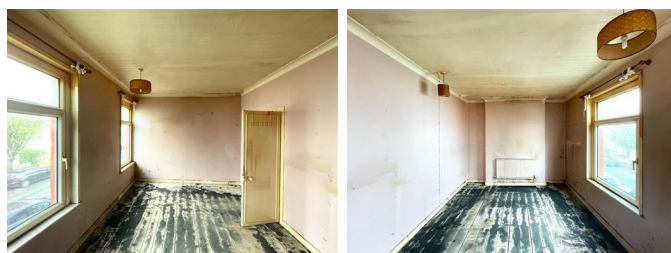
Fitted with a range of wall and base units with worktop over, 1+1/2 bowl stainless steel sink, plumbing for washing machine, space for fridge/freezer and cooker. Double glazed windows to side and rear, door to rear garden, radiator.

### First Floor

#### Landing

Loft access, radiator.

#### Bedroom 1 10'4" x 14'10" (3.16m x 4.51m)



Two double glazed windows to front, radiator.

#### Bedroom 2 11'1" x 8'11" (3.37m x 2.71m)

Double glazed window to rear, radiator.

#### Bedroom 3 10'2" x 8'6" (3.11m x 2.60m)

Single glazed window to rear, storage cupboard, radiator.

#### Bathroom

Fitted three piece suite comprising bath with shower over, wash hand basin and WC. Tiled walls, frosted window to side.

#### External

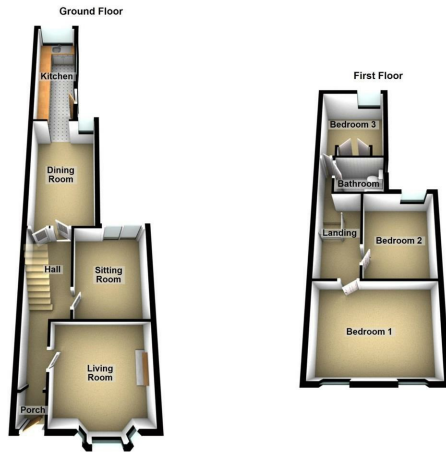
To the front of the property there is a courtyard. To the rear you will find an enclosed garden.

#### Tenure

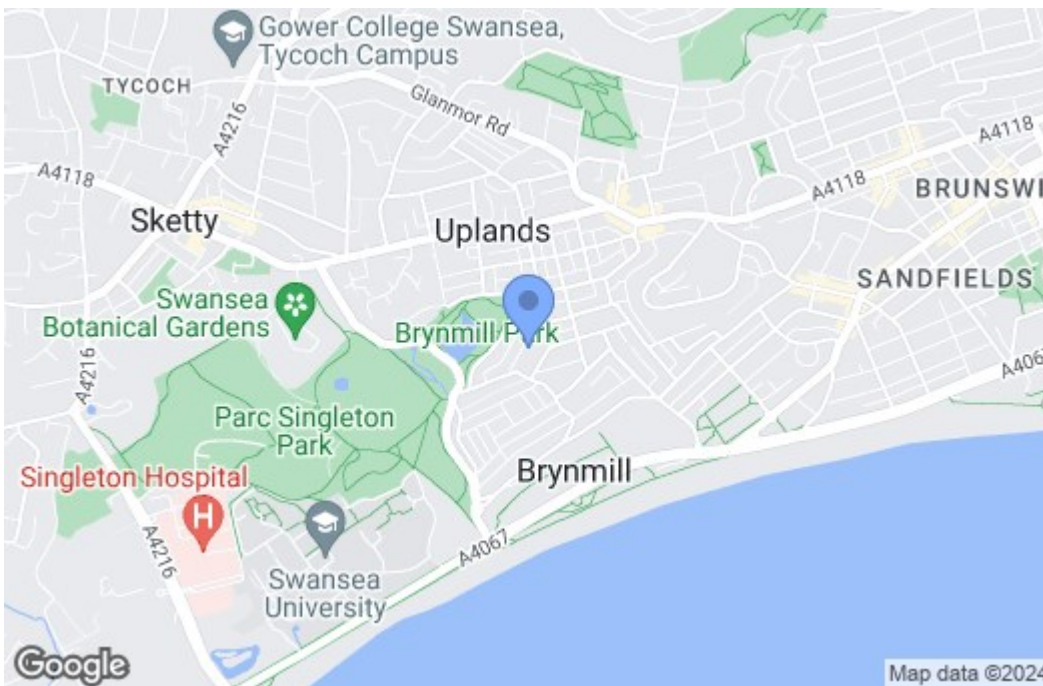
Freehold  
Council Band - D (Annual Price: £1,782 (min))



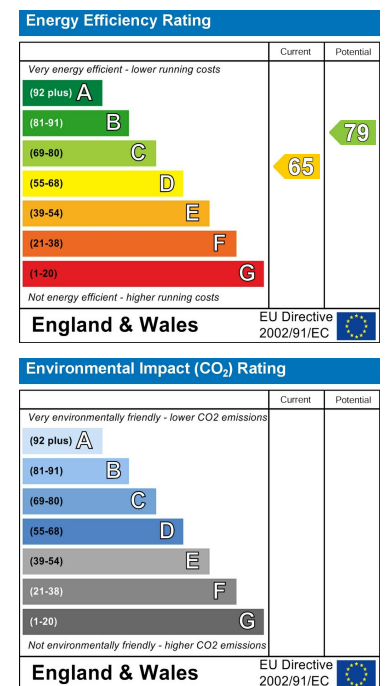
## Floor Plan



## Area Map



## Energy Efficiency Graph



These particulars, whilst believed to be accurate are set out as a general outline only for guidance and do not constitute any part of an offer or contract. Intending purchasers should not rely on them as statements of representation of fact, but must satisfy themselves by inspection or otherwise as to their accuracy. No person in this firm's employment has the authority to make or give any representation or warranty in respect of the property.