

TIME TO LEVEL UP...

WILLENHALL **137**

PART-RACKED
HIGH BAY
WAREHOUSE
IN THE
BLACK
COUNTRY
READY FOR OCCUPATION



WILLENHALL

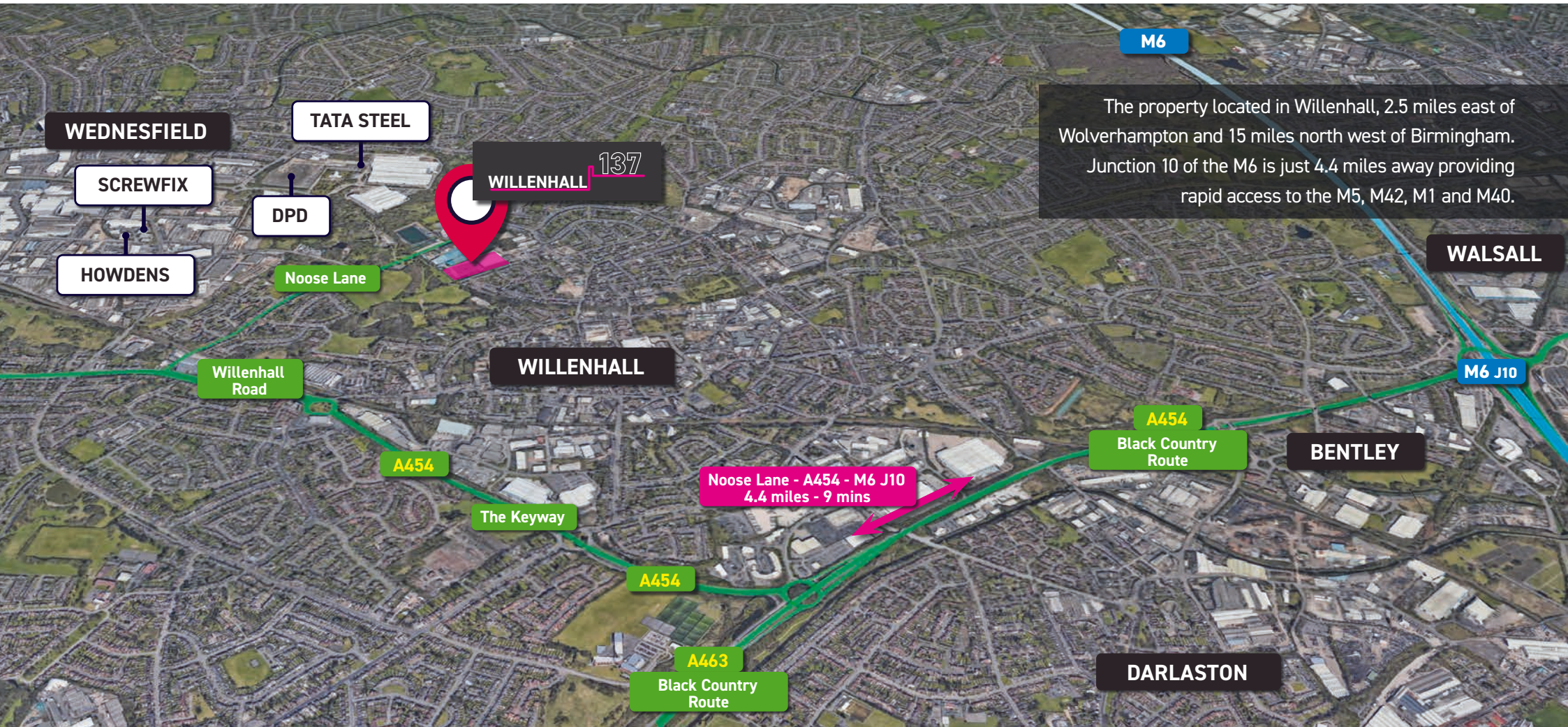
137

**NOOSE LANE, WILLENHALL, WOLVERHAMPTON
WEST MIDLANDS, WV13 3AP**

W3W: [///motel.spicy.gains](http://motel.spicy.gains)



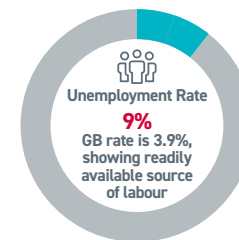
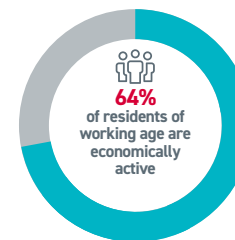
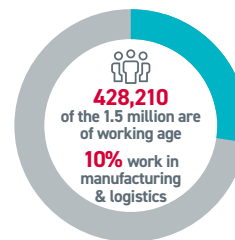
TO LET racked industrial warehouses within a prime commercial location
up to 136,953 sq.ft. (12,723m²)



WILLENHALL 137 provides a total accommodation of 136,953 sq.ft. on a total site of 15.37 acres giving a low site cover of approximately 45%. The premises are made up of a mixture of industrial and warehouse buildings in varying age but of good functional quality with eaves height ranging from 8m to 17m. The warehouse is part-leased which will be left in-situ and can be utilised straight away. Preference is to dispose of the whole as one unit, however, there is the possibility of splitting the property.



Within 30 minutes drive time



WILLENHALL

GUARDIAN LOCK & ENGINEERING

DAVENPORT BURGESS

137

WILLENHALL

B4484

Park Road

FIBBERSLEY PARK PRIMARY ACADEMY

SPORTING KHALSA FC

WMT GARAGE

WILLENHALL MEMORIAL PARK

BLACK COUNTRY PERFORMANCE HUB

Noose Lane

WILLENHALL 137



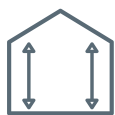
ACCOMMODATION

The accommodation comprises:

Rear Unit includes canopy space of	136,953sq.ft. 12,723m ² 15,277sq.ft. 1,419m ²
--	--

KEY FEATURES

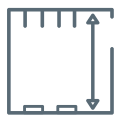
- Gatehouse
- Level Access Doors
- Large Yards
- Part-racked (24,000 pallet positions)
- Modern office accommodation



17m
eaves
height



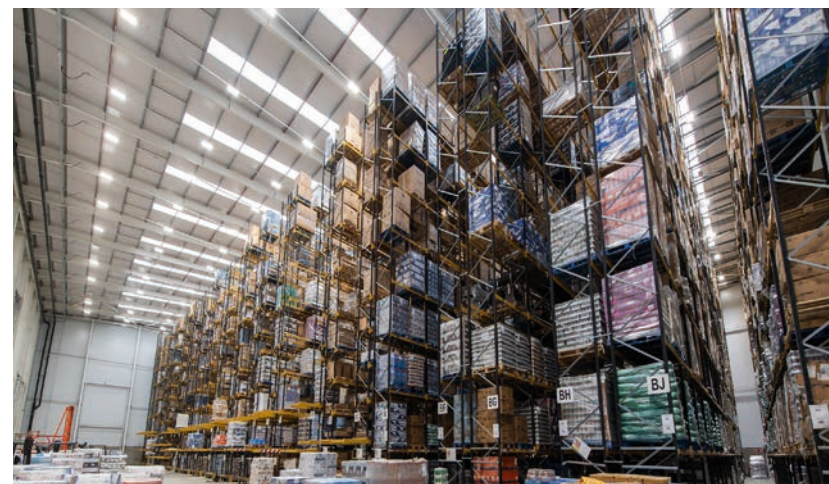
2 storey
office
accommodation



large
secure area



Ample HGV
parking spaces







TRAVEL DISTANCES

SAT NAV: WV13 3AP
 What 3 Words: ///motel.spicy.gains

TOWNS & CITIES

Willenhall	0.9 miles	4 mins
Wolverhampton	3.5 miles	12 mins
Walsall	4.8 miles	15 mins
West Bromwich	7.8 miles	16 mins
Birmingham	15 miles	24 mins
Coventry	33.7 miles	46 mins
Crewe	46 miles	56 mins
Leicester	54.1 miles	1 hr 30 mins
Manchester	74.8 miles	1 hr 24 mins
London	135 miles	2 hrs 40 mins

MOTORWAYS

M6 J10	4.4 miles	9 mins
M54	4.5 miles	11 mins
M6 Toll	6.1 miles	13 mins
M5/M6 Junction	6.7 miles	13 mins
M42	19 miles	26 mins
M40	31.1 miles	38 mins
M69	33.5 miles	40 mins
M1	44 miles	50 mins
M25	117 miles	2 hrs 3 mins

AIRPORTS

Birmingham	24.5 miles	33 mins
East Midlands	48.9 miles	58 mins
Manchester	66.5 miles	1 hr 13 mins

PORTS

Holyhead	163 miles	2 hrs 52 mins
Felixstowe	188 miles	3 hrs 26 mins
Channel Tunnel	203 miles	3 hrs 38 mins
Folkestone	208 miles	3 hrs 47 mins

WILLENHALL 137



FOR FURTHER INFORMATION

Please contact:

hexagon
commercial property
Black Country
01384 374888
hexagoncommercial.co.uk

Harvey Pearson
07387 165367
hp@hexagoncommercial.co.uk
Jack Summers
07446 912228
js@hexagoncommercial.co.uk

BNP PARIBAS
REAL ESTATE
0121 237 1234
realestate.bnpparibas.co.uk

Chris Harris
07554 644091
chris.harris@realestate.bnpparibas
Giles Thomas
07443 149671
giles.thomas@realestate.bnpparibas

BULLEYS
01902 713333
BULLEYS.CO.UK

James Bird
07894 930592
james.bird@bulleys.co.uk
Lewis Giles
07779 994141
lewis.giles@bulleys.co.uk