

Fletcher & Company

3 Amber Hill, Crich, Matlock, DE4 5BZ

Offers Around £375,000

Freehold



- Spacious Detached Home
- Superb Aspect over Nature Reserve & Far-Reaching Views
- Cloakroom/WC, Utility & Study
- Generous Lounge/Dining Room with Log Burner
- Well Appointed Fitted Kitchen
- Four Bedrooms & Two Bathrooms
- Private Enclosed Garden
- Driveway & Integral Garage
- No Chain Involved
- Quiet Cul-de-Sac Location





Summary

A spacious four bedroom detached home with private garden occupying a cul-de-sac location with views to the rear over a nature reserve and far-reaching views to the front. The property is sold with the benefit of no chain involved.

F&C

The Location

Crich is a very popular village set amidst attractive open countryside with a varied selection of shops, pubs, a primary school and delightful walks. It is famous for the Tramway Museum and Crich Stand. Crich is within reach of Matlock, Matlock Bath, Wirksworth and Belper as well as Derby.

Accommodation

Lower Ground Floor

Utility

7'10" x 5'1" (2.39 x 1.55)

Comprising marble effect worktop having a stainless steel sink unit with fitted cupboards beneath and appliance space suitable for washing machine.

Cloakroom

4'9" x 2'7" (1.47 x 0.80)

Appointed with a low flush WC and a wash handbasin.

Study

10'7" x 7'5" (3.23 x 2.28)

Having a central heating radiator and an integral door to garage.



Garage

15'1" x 10'1" (4.61 x 3.09)

With power, lighting and workshop to rear.

Ground Floor

Entrance Hall

10'10" x 9'9" (3.32 x 2.99)

A composite entrance door provides access to the hallway with central heating radiator, wood effect tile flooring and staircases to first floor and lower ground floor.



Lounge/Dining Room

23'7" x 13'4" (7.20 x 4.08)

Featuring a cast iron log burner, central heating radiator, decorative coving and double glazed window to rear offering pleasant aspect and composite door to garden.



Fitted Kitchen

12'2" x 8'0" (3.73 x 2.45)

Comprising wood grain effect worktops with tiled surrounds, inset stainless steel sink unit, fitted base cupboards and drawers, complementary wall mounted cupboards with down lighting, appliance spaces including a six plate Rangemaster gas hob, American style Neff fridge freezer and Smeg dishwasher (all available by separate negotiation), central heating radiator, quarry tiled floor, recessed ceiling spotlighting and double glazed window to front offering stunning views in the distance.



Bedroom Three

11'7" x 10'1" (3.55 x 3.09)

Having a central heating radiator and double glazed window to front offering fabulous views.



Bedroom Four

9'10" x 8'11" (3.02 x 2.72)

Having a central heating radiator and double glazed window to rear with views over the garden and mature trees.



First Floor Landing

8'5" x 3'0" (2.58 x 0.92)

With access to attic space housing the Baxi gas fired boiler and double glazed window to side.

Bedroom One

13'5" x 12'11" (4.09 x 3.95)

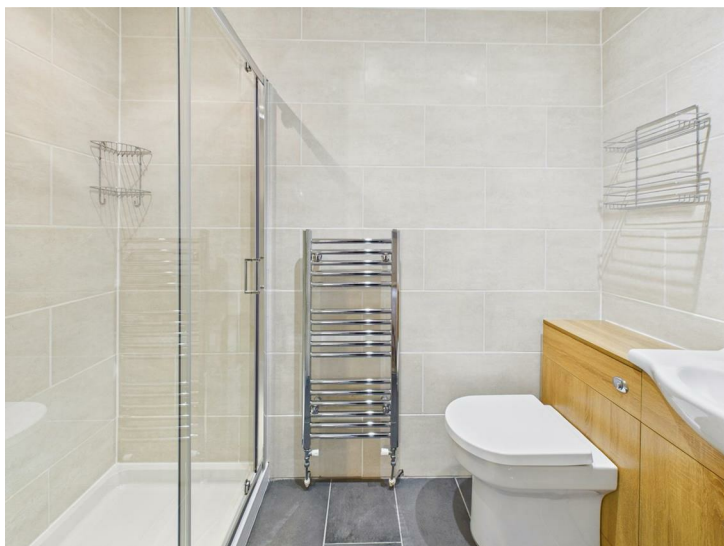
With central heating radiator, linen cupboard with central heating radiator and double glazed window to rear overlooking the nature reserve and mature trees.



En-Suite Shower Room

7'8" x 3'10" (2.36 x 1.18)

Appointed with a low flush WC, vanity unit with wash handbasin and cupboards beneath, double shower cubicle, chrome towel radiator and recessed ceiling spotlighting.



Bedroom Two

12'11" x 10'1" (3.94 x 3.09)

Having a central heating radiator and double glazed Velux window to front offering stunning views.



Family Bathroom

8'9" x 6'3" (2.68 x 1.92)

Partly tiled with a white suite comprising low flush WC, vanity unit with wash handbasin and cupboard beneath, panelled bath with shower over, ladder style radiator, recessed spotlight and double glazed window to side.

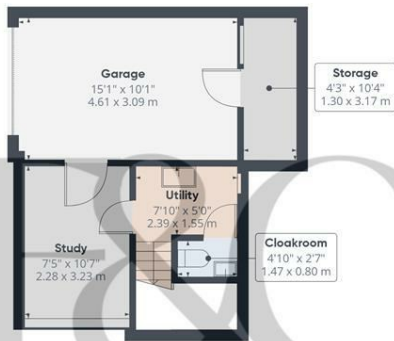


Outside

To the rear of the property is a fabulous garden with lower level patio area and stone edged herbaceous borders containing plants and shrubs. Steps lead up to an elevated lawn surrounded by stone walling and timber fencing. There are well stocked borders and a greenhouse. There is a pleasant backdrop overlooking the nature reserve ideal for dog walking. To the front of the property there is a good sized driveway providing off-road parking an access to an integral garage measuring 15'1" x 10'1"



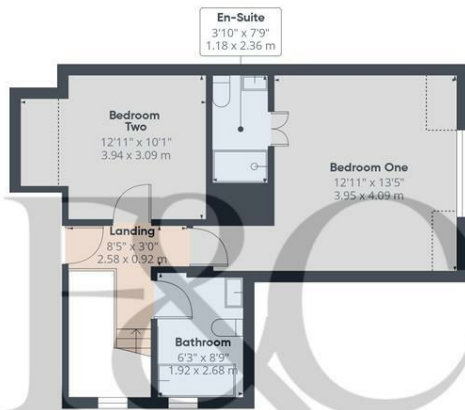
Council Tax Band C



Floor -1



Floor 0



Floor 1

Approximate total area[®]

1486 ft²
138 m²

Reduced headroom

31 ft²
2.9 m²

(1) Excluding balconies and terraces

Reduced headroom
..... Below 5 ft/1.5 m

Calculations reference the RICS IPMS 3C standard. Measurements are approximate and not to scale. This floor plan is intended for illustration only.

GIRAFFE360



Energy Efficiency Rating

	Current	Potential
Very energy efficient - lower running costs		
(92 plus) A		
(81-91) B		
(69-80) C		77
(55-68) D	67	
(39-54) E		
(21-38) F		
(1-20) G		
Not energy efficient - higher running costs		
England & Wales	EU Directive 2002/91/EC	

Duffield Office

Duffield House
Town Street
Duffield
Derbyshire
DE56 4GD

01332 843390
duffield@fletcherandcompany.co.uk

Derby Office

15 Melbourne Court
Millennium Way
Pride Park
Derby
DE24 8LZ

01332 300558
derby@fletcherandcompany.co.uk

Willington Office

3 The Boardwalk
Mercia Marina
Findern Lane
Willington
Derbyshire
DE65 6DW

01283 241500
willington@fletcherandcompany.co.uk

3 Amber Hill
Crich
Matlock
DE4 5BZ

Council Tax Band: C
Tenure: Freehold

