



2 Bed Cottage

2 Mill Cottage Darley Abbey Mills, Darley Abbey, Derby DE22 1DZ
Offers Around £225,000 Freehold



2



1



2



E

**Fletcher
& Company**

www.fletcherandcompany.co.uk

- Character Mill Cottage
- Located in the Heart of Darley Mills – Popular Wine Bars and Restaurants
- Close to Darley Park & Darley Fields
- Requires Modernisation
- Lounge / Dining Room
- Kitchen
- Two Double Bedrooms & Two Bathrooms
- Private Garden
- Character Features
- No Chain Involved

This two-bedroom, two-bathroom cottage presents a unique opportunity for those seeking a characterful home in a vibrant community. This property is perfect for first-time buyers, investors, or those in search of a quaint holiday retreat.

While the cottage requires modernisation throughout, this presents a wonderful chance for the new owner to personalise the space and truly make it their own.

Situated in the heart of Darley Mills, residents will enjoy a short stroll to a variety of popular wine bars and restaurants, making it an ideal location for socialising and enjoying the local culture. The picturesque surroundings and community spirit of Darley Abbey further enhance the appeal of this property being a short walk to Darley Park and Darley Fields.

The Location

Darley Abbey is situated one mile north of Derby city centre and offers a good range of local amenities including a shop/café, hairdressers and historic St Matthew's Church. It has a reputable village primary school (Walter Evans) which serves Ecclesbourne Secondary School located in Duffield. Darley Abbey is well known for being on the doorstep of the beautiful Darley Park with its delightful riverside walks. Excellent transport links are close by providing easy access onto the A6, A38, A50 and A52 leading to the M1 motorway. The cottage is within a short walk to the vibrant Derwent Valley Mills including a fine dining restaurant and popular wine bars. A further point of note is that the Darley Abbey village is one of the few World Heritage Sites.

Accommodation

Ground Floor

Entrance Hall

5'4" x 2'6" (1.65 x 0.78)

With half glazed entrance door and storage cupboard.

Lounge / Dining Room

22'1" x 15'10" (6.75 x 4.85)

With exposed brick chimney breast, decorative beams to ceiling, two radiators, character window to front, character window to rear and split level staircase leading to first floor.



Kitchen

12'1" x 6'3" (3.69 x 1.93)

With a single, stainless steel sink unit with mixer tap, wall and base units with worktops, gas cooker, window to side and stable door giving access to garden.



Inner Lobby

6'5" x 2'2" (1.97 x 0.67)

With plumbing for automatic washing machine and space for tumble dryer.

Bathroom

6'5" x 2'2" (1.96 x 0.67)

With bath with shower over, fitted wash basin with fitted base cupboard underneath, low level WC, radiator and obscure window.



First Floor

2'11" x 2'5" (0.90 x 0.76)

Double Bedroom One

11'11" x 11'8" (3.64 x 3.56)

With radiator and character window to front.



Double Bedroom Two

11'7" x 9'11" (3.55 x 3.03)

With radiator, decorative beams to ceiling and window to rear.



Shower Room

12'2" x 6'9" (3.72 x 2.08)

With separate shower cubicle with electric shower, wash basin, low level WC, radiator, concealed Worcester boiler, storage cupboards and window to rear.

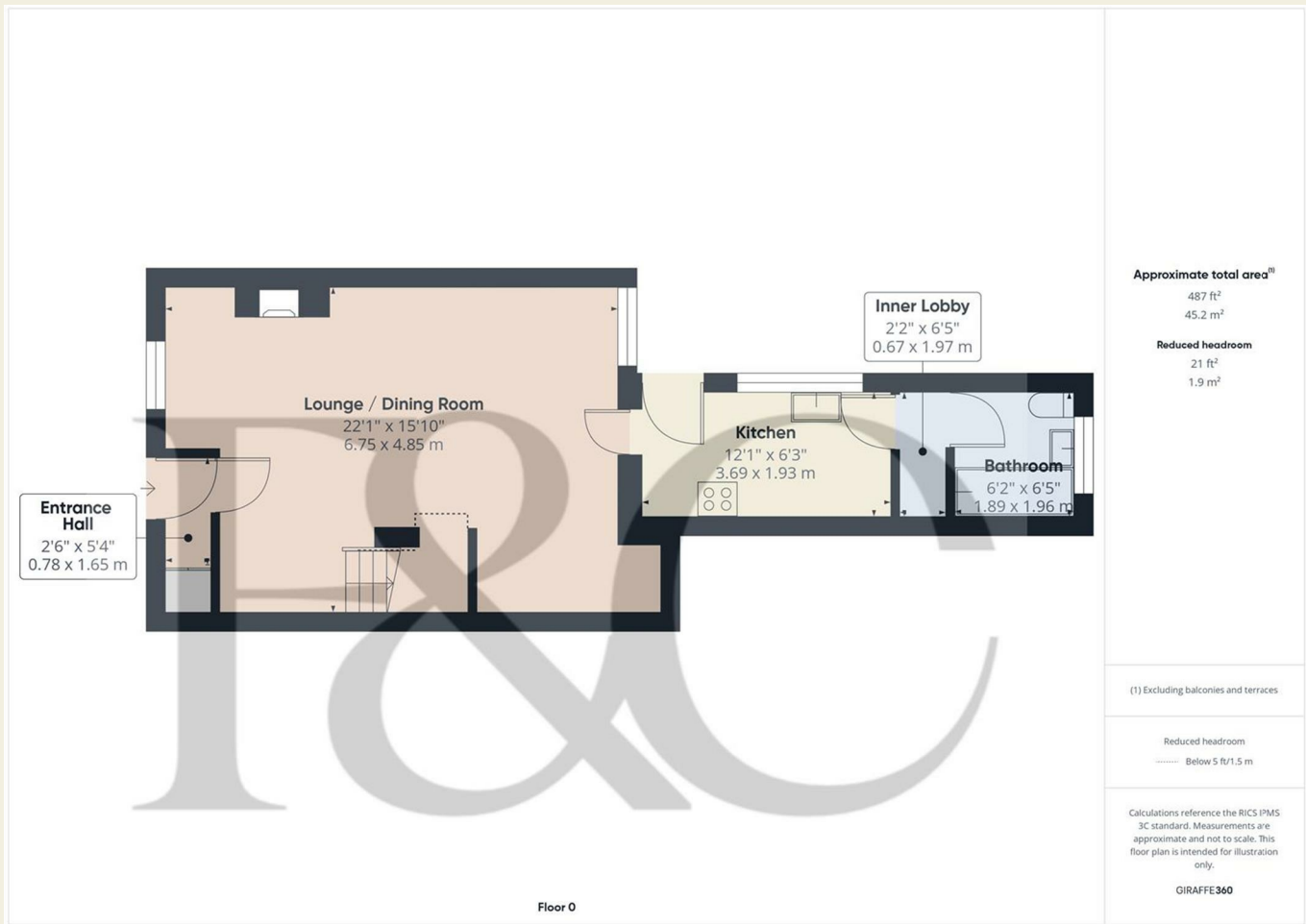


Garden

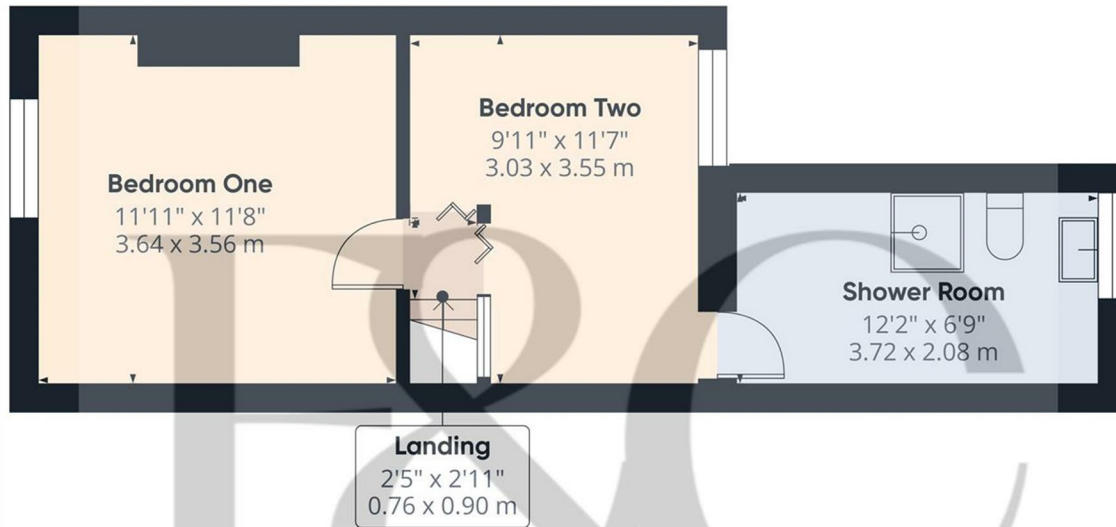
To the rear of the property is a private, manageable, enclosed rear garden which is paved with raised decking with summer house and side timber shed.



Council Tax Band



These particulars do not constitute an offer or a contract neither do they form part of an offer or contract. The vendor does not make or give and Messrs. Fletcher & Company nor any person employed has any authority to make or give any representation or warranty, written or oral, in relation to this property. Whilst we endeavour to make our sales details accurate and reliable, if there is any point which is of particular importance to you, please contact the office and we will be pleased to check the information for you, particularly if contemplating travelling some distance to view the property. None of the services or appliances to the property have been tested and any prospective purchasers should satisfy themselves as to their adequacy prior to committing themselves to purchase.



Approximate total area⁽¹⁾
330 ft²
30.6 m²


(1) Excluding balconies and terraces

Calculations reference the RICS IPMS 3C standard. Measurements are approximate and not to scale. This floor plan is intended for illustration only.


GIRAFFE360

Floor 1

Energy Efficiency Rating

	Current	Potential
<i>Very energy efficient - lower running costs</i>		
(92 plus) A		
(81-91) B		
(69-80) C		77
(55-68) D		
(39-54) E	54	
(21-38) F		
(1-20) G		
<i>Not energy efficient - higher running costs</i>		
England & Wales		EU Directive 2002/91/EC 

Environmental Impact (CO₂) Rating

	Current	Potential
<i>Very environmentally friendly - lower CO2 emissions</i>		
(92 plus) A		
(81-91) B		
(69-80) C		
(55-68) D		
(39-54) E		
(21-38) F		
(1-20) G		
<i>Not environmentally friendly - higher CO2 emissions</i>		
England & Wales		EU Directive 2002/91/EC 

These particulars do not constitute an offer or a contract neither do they form part of an offer or contract. The vendor does not make or give and Messrs. Fletcher & Company nor any person employed has any authority to make or give any representation or warranty, written or oral, in relation to this property. Whilst we endeavour to make our sales details accurate and reliable, if there is any point which is of particular importance to you, please contact the office and we will be pleased to check the information for you, particularly if contemplating travelling some distance to view the property. None of the services or appliances to the property have been tested and any prospective purchasers should satisfy themselves as to their adequacy prior to committing themselves to purchase.