



---

2 Bed Flat - Penthouse

Penthouse A King Street  
Derby  
DE1 3EF

£1,750 Per Calendar Month

---

Fletcher  
& Company



# Penthouse A King Street Derby DE1 3EF



- EXTREMELY RARE - PENTHOUSE APARTMENT - ONE OF ONLY TWO
- BRAND NEW - TWO BEDROOM TWO BATHROOM APARTMENT
- OPEN PLAN LIVING AT ITS VERY BEST - NO EXPENSE SPARED
- NEW KITCHEN, BATHROOM, EN-SUITE, FLOORING
- HIGH CEILINGS WITH MANY WINDOWS - A LIGHT A SPACIOUS APARTMENT
- OVER 1100 SQ.FT - A VERY LARGE APARTMENT
- ALLOCATED AND SECURE PARKING
- CLOSE TO DERBY CITY, AMENITIES AND ROAD NETWORKS
- \*\*\*INTERNAL PHOTOS TO FOLLOW\*\*\*
- VIEWINGS AVAILABLE 7 DAYS A WEEK
- AVAILABLE UNFURNISHED - PLEASE CALL US IF YOU REQUIRE FURNISHED

EXTREMELY RARE, BRAND NEW EXECUTIVE PENTHOUSE - Built in 1875 as an extension to the original St Helen's House, this 3-storey former school house is a prominent building in Derby's history.

Located on the affluent King Street in Derby City Centre, available Early July 2025 is this brand new, never been lived in two bedroom, two bathroom penthouse within walking distance of Derby city centre.

This immense apartment boasts over 1100 square feet of quality, vast amounts of light, high ceilings, high specification furnishing with a no expense spared feel throughout. The property has been neutrally decorated to further compliment this Penthouse, there are two double bedrooms, en-suite to master and a large family bathroom. There is a large open-plan kitchen/ living/ dining room with stylish carpeting and flooring throughout. The kitchen, bathroom and en-suite are contemporary and stylish.

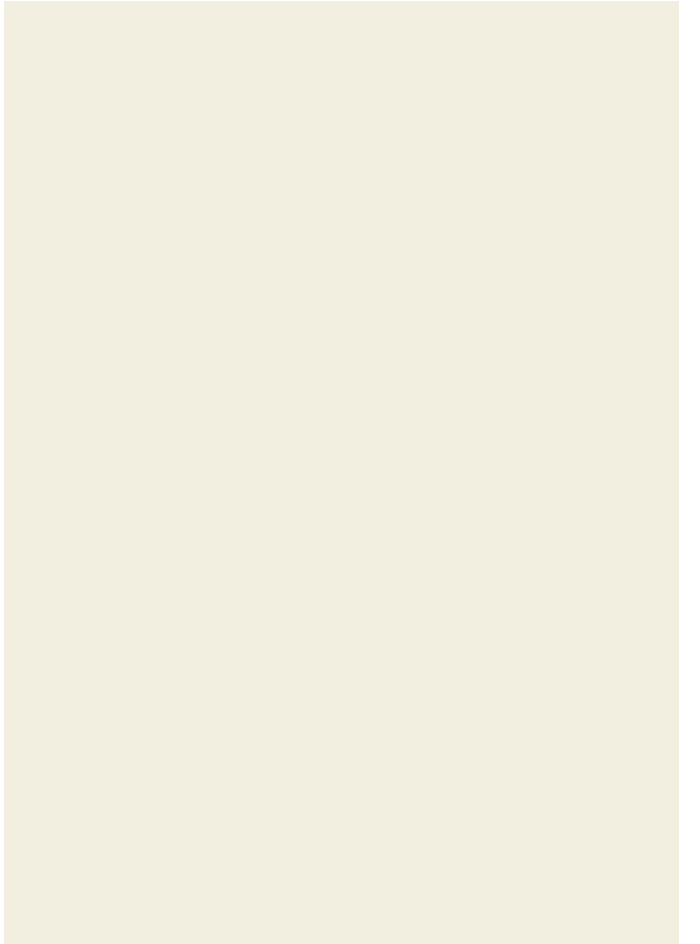
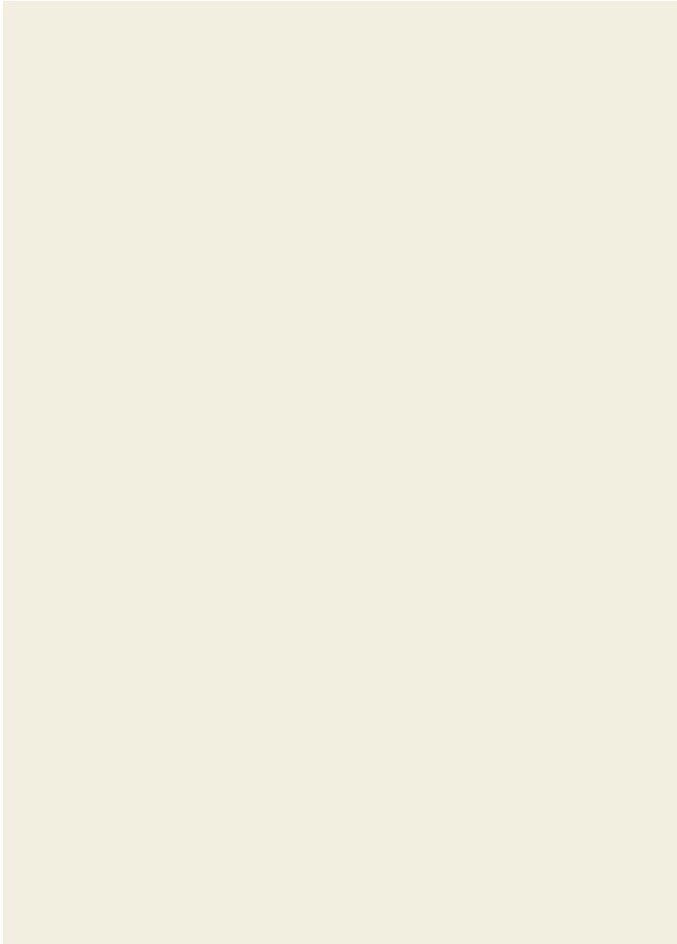
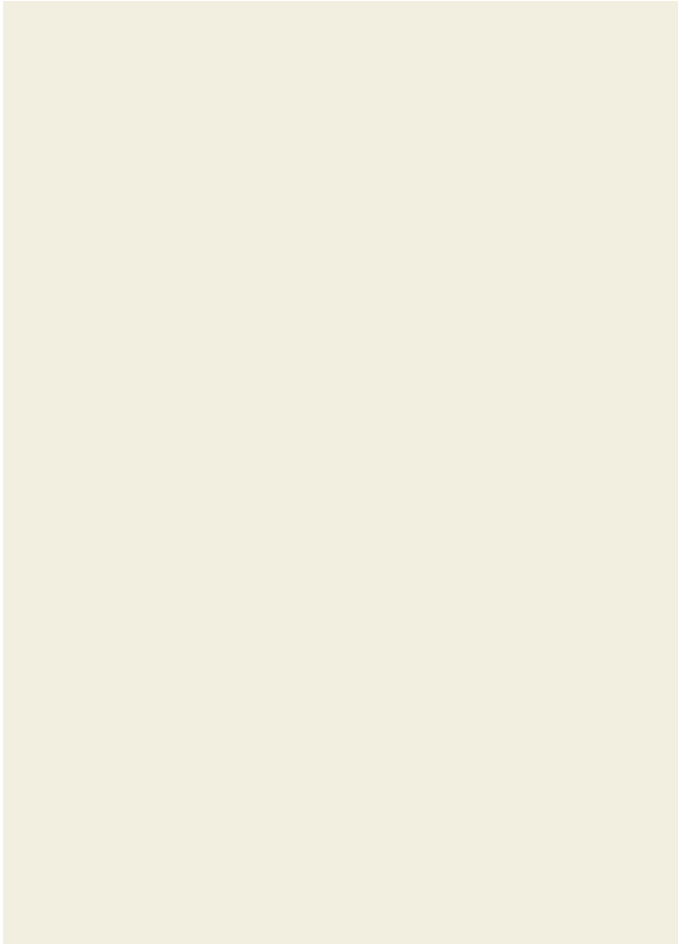
Situated on the top floor and being one of only two apartments occupying the whole of the floor of this historic and grand building, you will want for nothing, with breathtaking, and expansive views of Derby and surrounding areas, a peaceful setting with access to the city and beyond immediately.

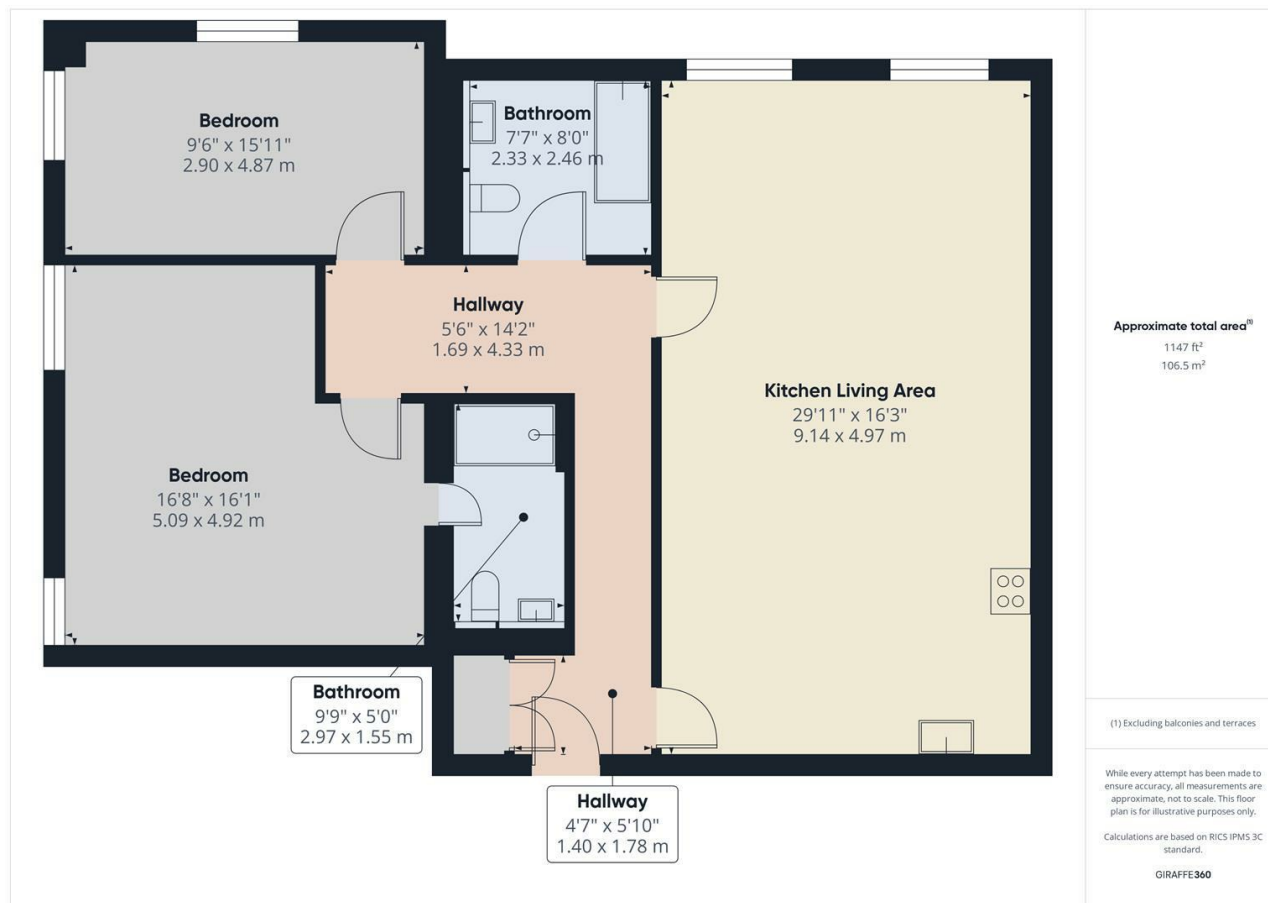
The property is available on an unfurnished and long term basis. VIEWINGS ARE AVAILABLE IMMEDIATELY AND SEVEN DAYS A WEEK.

The property is located on King Street in the popular Five Lamps area; a mixed use suburb a short walk (0.4 miles) north of Derby City Centre. The A38 is approximately 1 mile to the north of this penthouse, which in turn provides access to the M1 and Junction 28. All local amenities are available by foot, or vehicle, the







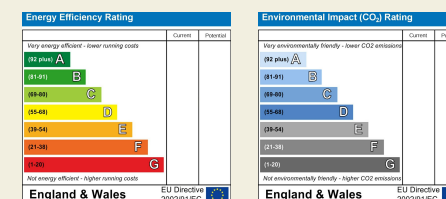


Duffield House  
Town Street  
Duffield  
Derbyshire  
DE56 4GD

T: 01332 843390

E: duffield@fletcherandcompany.co.uk

www.fletcherandcompany.co.uk



**Fletcher  
& Company**

These particulars do not constitute an offer or a contract neither do they form part of an offer or contract. The vendor does not make or give and Messrs. Fletcher & Company nor any person employed has any authority to make or give any representation or warranty, written or oral, in relation to this property. Whilst we endeavour to make our sales details accurate and reliable, if there is any point which is of particular importance to you, please contact the office and we will be pleased to check the information for you, particularly if contemplating travelling some distance to view the property. None of the services or appliances to the property have been tested and any prospective purchasers should satisfy themselves as to their adequacy prior to committing themselves to purchase.