



---

1 Bed Flat - Penthouse

Flat 7 Ellis House, Derby  
Road  
Melbourne  
Derby  
DE72 8FF

£595 Per Calendar Month

---

Fletcher  
& Company

Flat 7 Ellis House, Derby Road  
Derby  
DE73 8FE



- AVAILABLE MID JUNE 2025 - PENTHOUSE IN MELBOURNE • £500 DEPOSIT • SOUGHT AFTER OF MELBOURNE, DERBYSHIRE • ON STREET PARKING AVAILABLE • UNFURNISHED • EN-SUITE BATHROOM TO DOUBLE BEDROOM • WALKING DISTANCE TO ALL AMENITIES • LONG TERM LETS AVAILABLE • A VERY LIGHT AND SPACIOUS FEELING SELF CONTAINED FLAT • GREAT SIZED TOP FLOOR ONE BEDROOM FLAT

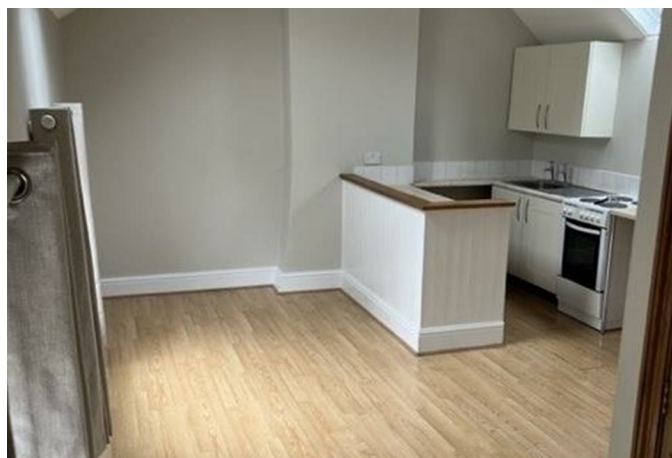
PENTHOUSE - A superb, light and airy second floor flat located in the centre of the much sought after village of Melbourne, Derbyshire.

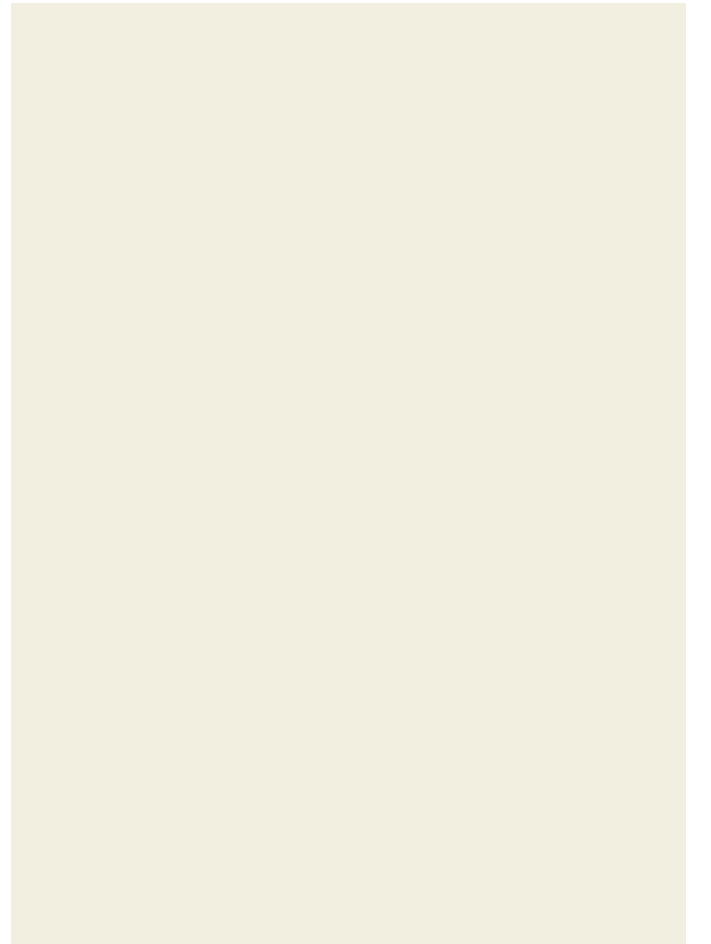
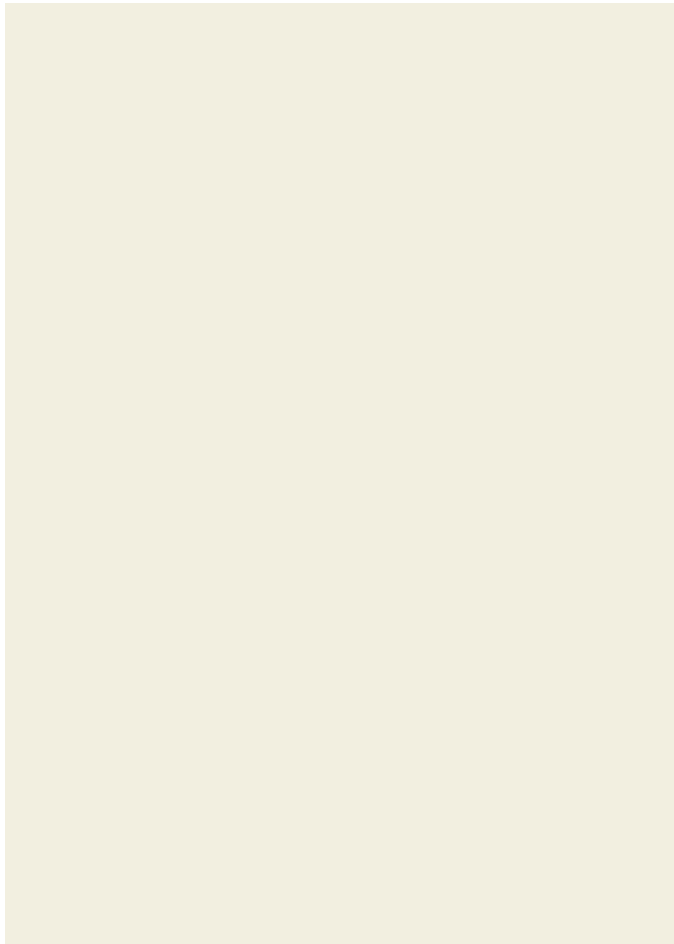
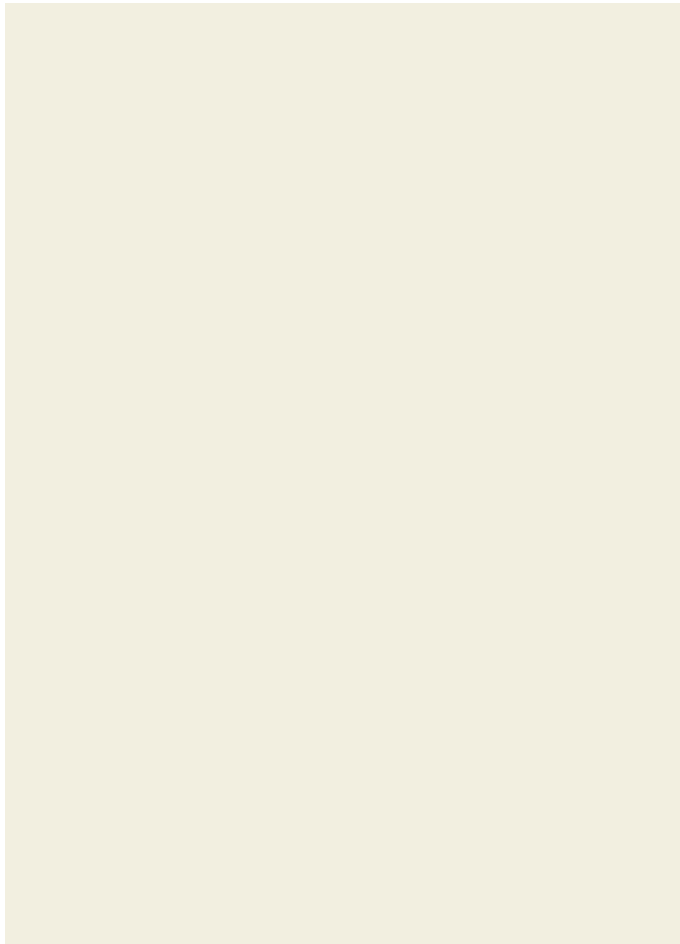
Accessed via its own landing area is this beautiful one double bedroom top floor self contained flat. The property benefits from stylish open plan living, with a nicely fitted kitchen and spacious living dining area. The double bedroom gives access to the en-suite bathroom.

Outside, there is parking is available outside of the property and locally. Melbourne benefits from excellent transport links, eateries, cafes, restaurants and much more.

Viewing is essential to appreciate all that this property provides and its beautiful, and convenient location.

Available from mid June 2025.



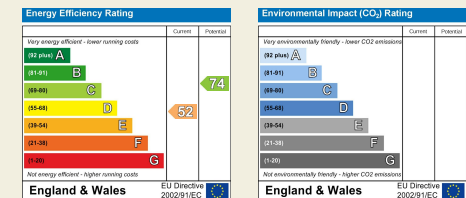




Duffield House  
Town Street  
Duffield  
Derbyshire  
DE56 4GD

T: 01332 843390

E: [duffield@fletcherandcompany.co.uk](mailto:duffield@fletcherandcompany.co.uk)  
[www.fletcherandcompany.co.uk](http://www.fletcherandcompany.co.uk)



These particulars do not constitute an offer or a contract neither do they form part of an offer or contract. The vendor does not make or give and Messrs. Fletcher & Company nor any person employed has any authority to make or give any representation or warranty, written or oral, in relation to this property. Whilst we endeavour to make our sales details accurate and reliable, if there is any point which is of particular importance to you, please contact the office and we will be pleased to check the information for you, particularly if contemplating travelling some distance to view the property. None of the services or appliances to the property have been tested and any prospective purchasers should satisfy themselves as to their adequacy prior to committing themselves to purchase.

Fletcher  
& Company