

Holmfield Over Croft Lane, Crich, Matlock, DE4 5PA

Offers Around £895,000

Freehold



- A Superbly Appointed Modern Detached House
- Envious Village Location With Views Over Open Countryside
- Impressive Hallway, Shower Room/Wc, and Utility Room
- 29ft Open Plan Living/Dining/Kitchen Opening To Rear
- Lounge And garden Room/Gym
- Five Bedrooms
- Four Bathrooms
- Parking For Several Vehicles
- Extensive Rear Patio And Full Width Balcony
- Lawned garden And Swim Spa And Jacuzzi





Summary

Nestled on Over Croft Lane in the picturesque village of Crich, Matlock, this remarkable architect-designed house offers a unique blend of modern living and traditional charm. Spanning an impressive 2,754 square feet, the property boasts five spacious bedrooms and four well-appointed bathrooms, making it an ideal family home.

Upon entering, you are greeted by a spacious hallway, an open plan living/dining/kitchen opening to the rear garden and patio, a characterful lounge with feature fireplace and a garden room/gym which also fully opens to the rear patio and garden. In addition there is a cinema room, a utility and ground floor shower room/Wc. An elegant, contemporary staircase leads to the first floor where there is a master bedroom with balcony, dressing room and en suite. Bedroom two also has access to a balcony and en suite. In addition there is an office/bedroom five and two further double bedrooms with a contemporary bathroom to the second floor.

The rear garden and extensive patio create a wonderful space for outdoor living and entertaining. There is a Swim spa and a jacuzzi with separate changing facilities.

For those with vehicles, the property offers ample parking for up to four cars, a valuable feature in this charming village setting.

The highly sought-after village of Crich is known for its stunning countryside views, and this property is no exception. From various vantage points within the home, you can enjoy far-reaching vistas that showcase the natural beauty of the surrounding landscape.

This individual home is not just a place to live; it is a sanctuary that combines elegance, comfort, and a connection to nature. If you are seeking a property that stands out in both design and location, this house on Over Croft Lane is a must-see.

F&C

The Location

Accommodation

Ground Floor

Impressive Entrance Hall

14'4" x 9'10" (4.39 x 3.00)

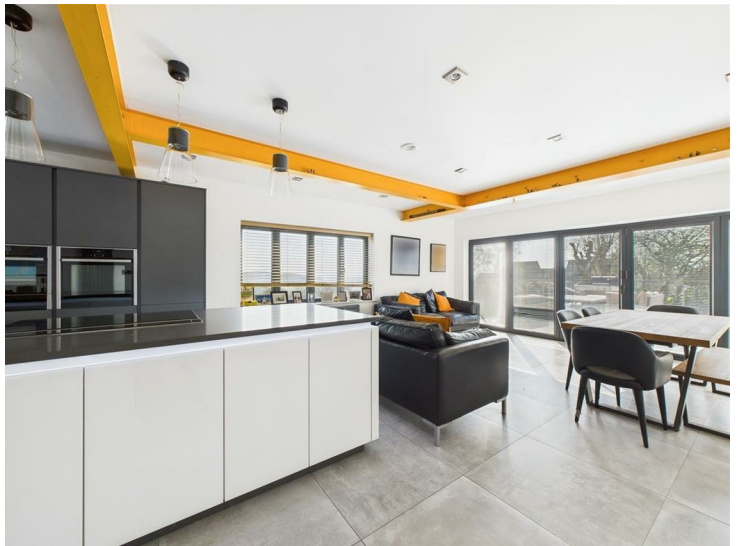
Having a solid oak timber door with double glazed full height windows to either side and a vertical contemporary style radiator. Having a ceramic tiled floor and the hall is open to the vaulted ceiling above which has a galleried landing. Oak panelled doors lead off to several rooms.



Living / Dining / Kitchen

29'9" x 16'7" (9.07 x 5.07)

The kitchen has been designed and installed by Creative Interiors of Derby and is comprehensively fitted with a range of modern base cupboards, drawers and eye level units with a granite work top over incorporating a one and a half bowl sink unit with high pressure mixer tap and an instant boiling water tap. Quality integrated appliances include a dishwasher, full height refrigerator, full height freezer, an induction hob with pop up extractor unit, three eye level electric fan ovens (one of which is a combination/microwave oven). Having under counter lighting, shelf recesses with lighting, inset spotlighting to the ceiling and contemporary vertical and horizontal modern radiators. Ceramic tiling runs through from the kitchen area to the living/dining space. There are double glazed windows to the front and side and folding doors open from the dining/living area on to the rear garden and patio.



Cinema Room

16'6" x 11'2" (5.04 x 3.41)

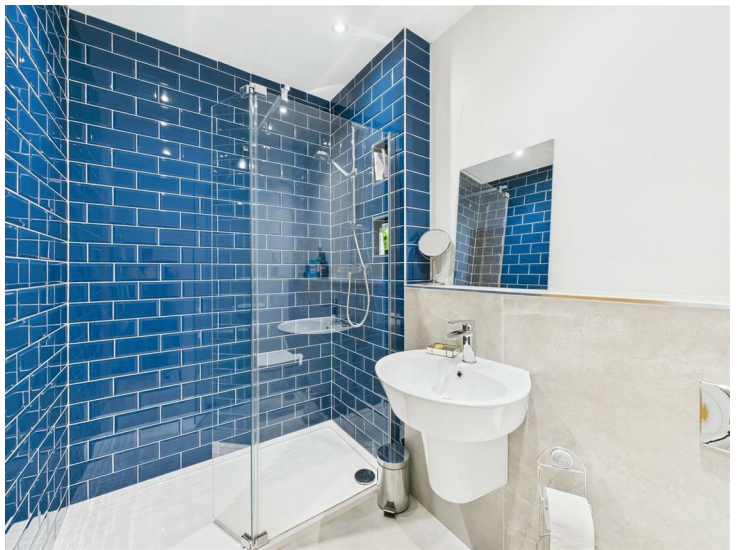
Having a horizontal contemporary style radiator, inset spotlighting and please note that the TV and surround sound system may be available to purchase via separate negotiation.



Shower Room

8'1" x 5'1" (2.48 x 1.57)

Appointed with a three piece contemporary white suite comprising a walk-in shower cubicle with glass shower door and mains fed shower over, a wall mounted wash handbasin and a low flush WC with complementary metro style tiling to the shower enclosure and ceramic floor and wall tiling to other areas. Having a wall mounted mirror, an extractor fan, inset spotlighting and a wall mounted chrome heated towel rail.



Garden Room

18'1" x 12'9" (5.53 x 3.91)

Having a ceramic tiled floor, underfloor heating, a double glazed lantern light ceiling and double glazed folding doors to two sides giving access to and views of the rear garden and patio.



Utility

8'3" x 5'7" (2.54 x 1.72)

Appointed with a range of modern eye level units, base cupboards and tall unit with a roll top worksurface over incorporating a stainless steel drainer unit with mixer tap. There is modern metro style tiling to the splashback areas, a built-in shoe rack, plumbing for automatic washing machine and space for a tumble dryer. Having a ceramic tiled floor and a central heating radiator. Inset spotlighting to the ceiling.



Lounge

20'5" x 17'8" (6.24 x 5.40)

Having a feature brick-built fireplace with tiled hearth housing an open fire with cast iron grate. There is oak flooring, modern vertical and horizontal radiators, TV and wired in speaker connections for surround sound and bi folding doors lead to the garden room/gym/games room.



First Floor

Landing

From the entrance hallway an oak and brushed steel spindled staircase rises to the first floor to a galleried landing with oak and brushed steel balustrade and a feature double glazed window to the front elevation. Having inset spotlighting, a cupboard housing the hot water cylinder and a TV/BT sound/vision matrix and the staircase leads to the second floor.

Bedroom One

16'7" x 14'0" (5.06 x 4.29)

Having feature double glazed French doors with full height windows to either side gives access to a full width external balcony running across the rear elevation and providing an excellent place to enjoy far-reaching views after a garden and countryside beyond. Bedroom one also has double glazed windows to the side providing far-reaching views, contemporary radiators and a door leads to the dressing room.



Dressing Room

6'11" x 5'8" (2.13 x 1.73)

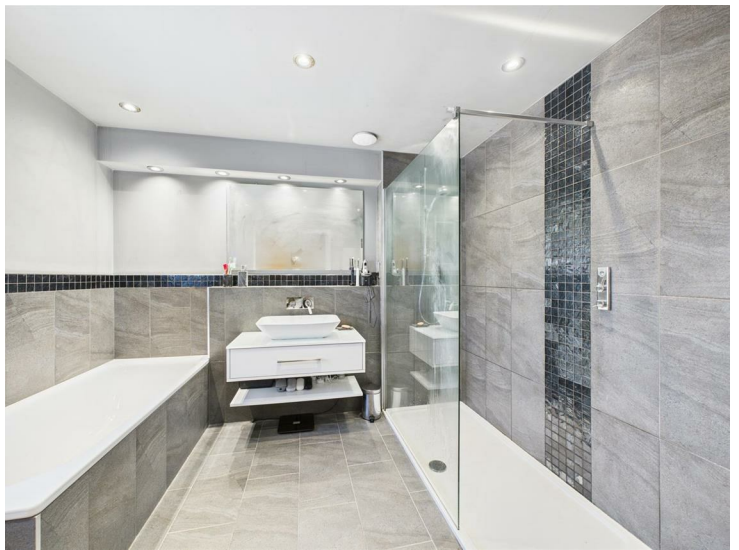
Appointed with a range of fitted wardrobes providing excellent hanging and storage space. The wardrobes have additional drawers, shelving and rails.



En-Suite

9'9" x 8'6" (2.99 x 2.61)

Appointed with a four piece contemporary modern suite by Creative Interiors of Derby comprising a walk-in shower unit with thermostatically controlled shower and glass shower screen, a wall mounted vanity unit with ceramic bowl and mixer tap over, a panelled bath and a low flush WC with tiling to all splashback areas and flooring. There is a wall mounted contemporary heated towel rail, a wall mounted mirror, recess spotlighting, an extractor fan and two double glazed windows with frosted glass.



Bedroom Two

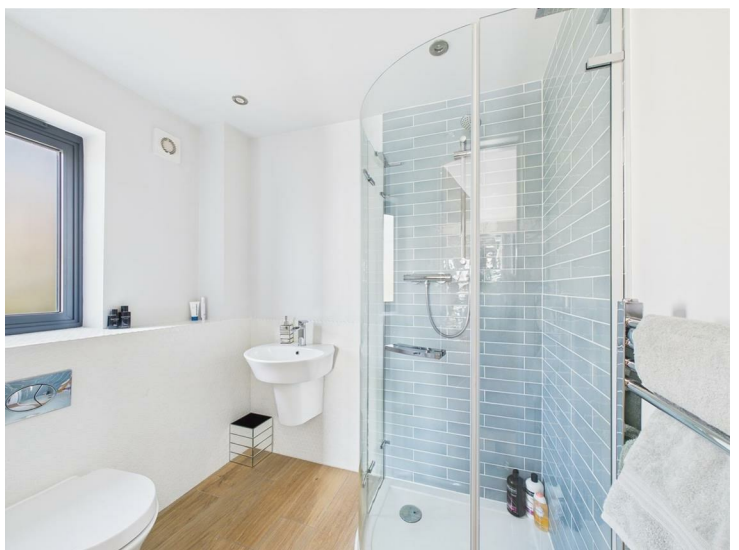
11'8" x 11'4" (3.58 x 3.47)

A double room with central heating radiator, inset spotlighting and double glazed French doors which provide access to the rear full width balcony. An enjoyable place to sit and enjoy far-reaching views of the garden and countryside beyond.

En-Suite

6'3" x 5'2" (1.92 x 1.59)

Appointed with a modern three piece suite comprising a shower unit with mixer shower over and metro style tiling, a wall mounted wash handbasin and a low flush WC with feature tiling to the splashback. Having a wood grain effect floor, an extractor fan, inset spotlighting, a wall mounted chrome heated towel rail and a double glazed window.



Bedroom Five / Office

10'10" x 6'5" (3.31 x 1.97)

With a wall mounted vertical radiator and two double glazed windows to the front elevation. Inset spotlighting to the ceiling.



Second Floor

Landing

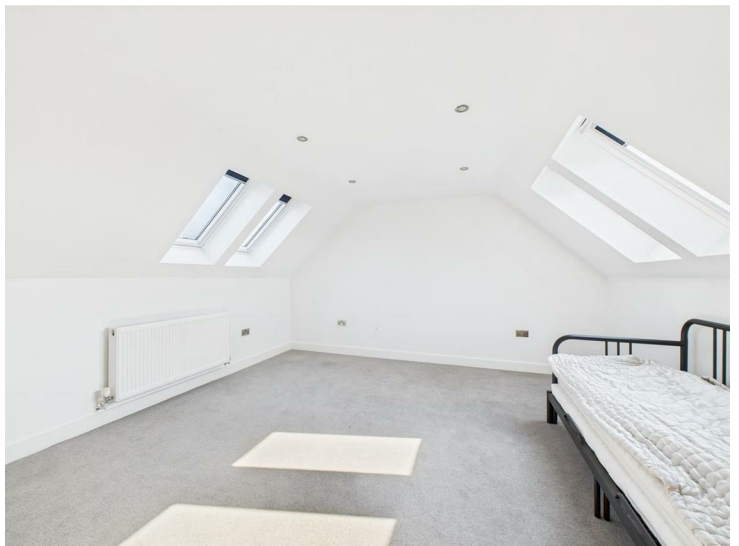
15'8" x 7'10" (4.80 x 2.41)

Having an oak and brushed steel balustrade and a double glazed skylight window.

Bedroom Three

14'4" x 14'4" (4.39 x 4.37)

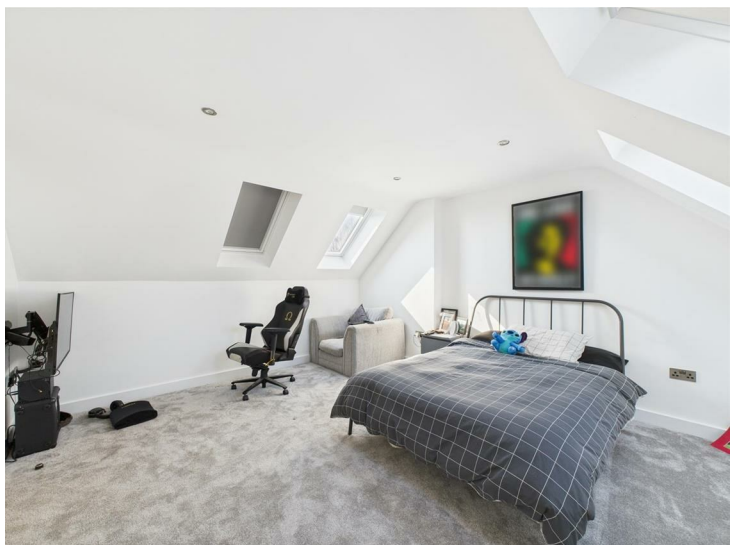
A double bedroom with two Velux style windows with integrated blackout blinds to the front and rear elevation. Having a central heating radiator and inset spotlighting.



Bedroom Four

14'3" x 12'9" (4.35 x 3.90)

A double bedroom with fitted wardrobes and drawers providing excellent hanging and storage space. There is a central heating radiator and four Velux style double glazed skylight windows to the front and rear elevation. Inset spotlighting to the ceiling.



Bathroom

8'11" x 8'9" (2.72 x 2.67)

Luxuriously appointed with a three piece contemporary white suite comprising a freestanding bath with hand-held shower attachments, a low flush WC, and a vanity wash handbasin with useful cupboard space beneath. There Is a wall mounted chrome heated towel rail inset spotlighting to the ceiling, an extractor fan and a feature double glazed window to the front elevation providing far-reaching views over Crich and surrounding countryside.

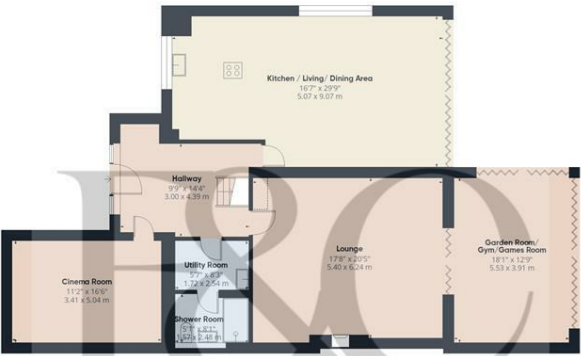


Outside

To the front of the property, and nicely set back from the road, a driveway provides off-road parking for several vehicles and there is an additional storage area to the front. A path to the side of the house provides access to the rear garden. To the rear there is an extensive, raised, ceramic tiled patio with stainless steel post and wire balustrade which flows nicely into the living accommodation. Steps lead down to an extensive lawned garden with dry stone wall and mature hedges to the surround. The garden is well-stocked with a variety of shrubs and flowering plants to the borders. To the rear there is an additional entertaining space with a “Hydropool” jacuzzi with additional swim spa/pool. There is a changing room pod with covered seating area. The garden enjoys far-reaching views over open countryside.



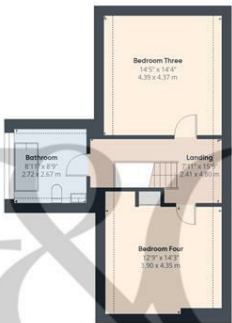
Council Tax Band E



Floor 0



Floor 1



Floor 2

Approximate total area[®]
2754 ft²
255.9 m²

Reduced headroom
79 ft²
7.4 m²

(1) Excluding balconies and terraces

Reduced headroom
..... Below 5 ft/1.5 m

While every attempt has been made to ensure accuracy, all measurements are approximate, not to scale. This floor plan is for illustrative purposes only.

Calculations are based on RICS IPMS 3C standard.

GIRAFFE360



Energy Efficiency Rating

	Current	Potential
Very energy efficient - lower running costs		
(92 plus) A		
(81-91) B		
(69-80) C	76	80
(55-68) D		
(39-54) E		
(21-38) F		
(1-20) G		
Not energy efficient - higher running costs		
England & Wales	EU Directive 2002/91/EC	

Duffield Office

Duffield House
Town Street
Duffield
Derbyshire
DE56 4GD

01332 843390
duffield@fletcherandcompany.co.uk

Derby Office

15 Melbourne Court
Millennium Way
Pride Park
Derby
DE24 8LZ

01332 300558
derby@fletcherandcompany.co.uk

Willington Office

3 The Boardwalk
Mercia Marina
Findern Lane
Willington
Derbyshire
DE65 6DW

01283 241500
willington@fletcherandcompany.co.uk

Holmfild Over Croft Lane
Crich
Matlock
DE4 5PA

Council Tax Band: E
Tenure: Freehold

