



2 Bed House - Terraced

23 King Street
Duffield
Belper
DE56 4EU

£995 Per Calendar Month

Fletcher
& Company

23 King Street
Belper
DE56 4EU



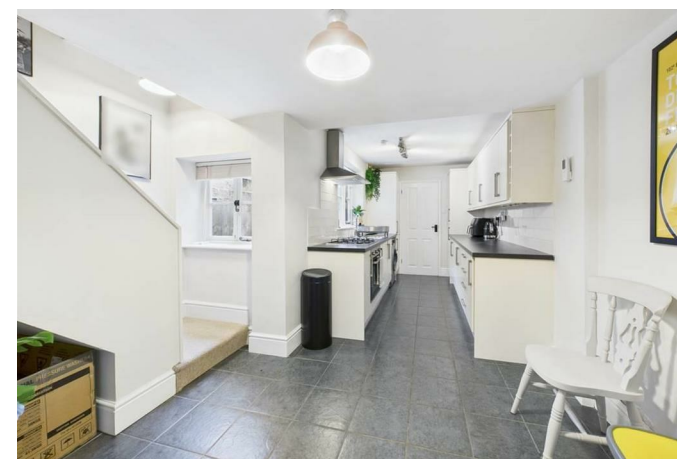
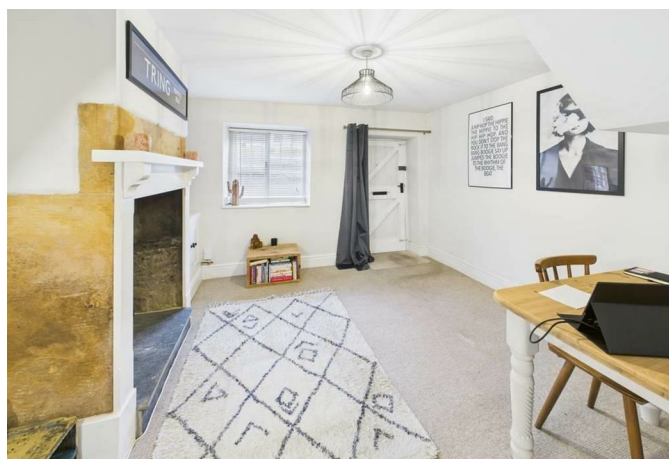
- AVAILABLE NOW • A BEAUTIFUL TWO BEDROOM COTTAGE • AVAILABLE SHORT OR LONG TERM • SECONDS FROM DUFFIELD VILLAGE • MINUTES FROM THE TRAIN STATION • VERY GOOD SIZED KITCHEN AND BATHROOM • LARGE SOUTH FACING GARDEN • ECCLESBOURNE SCHOOL CATCHMENT AREA • COUNCIL TAX BAND B • SEE FLOORPLAN - VIDEO TOUR AVAILABLE

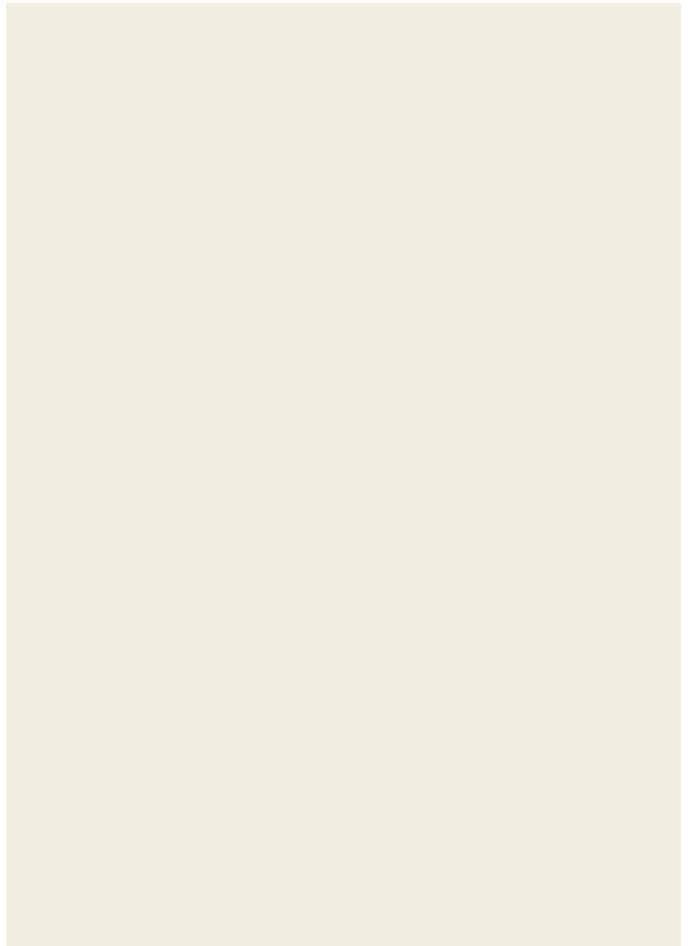
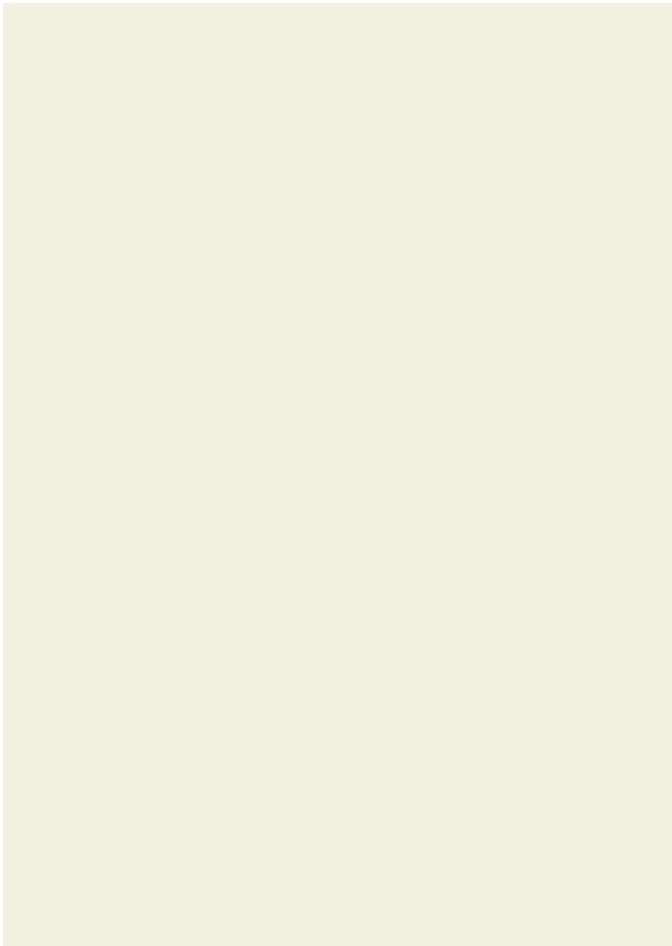
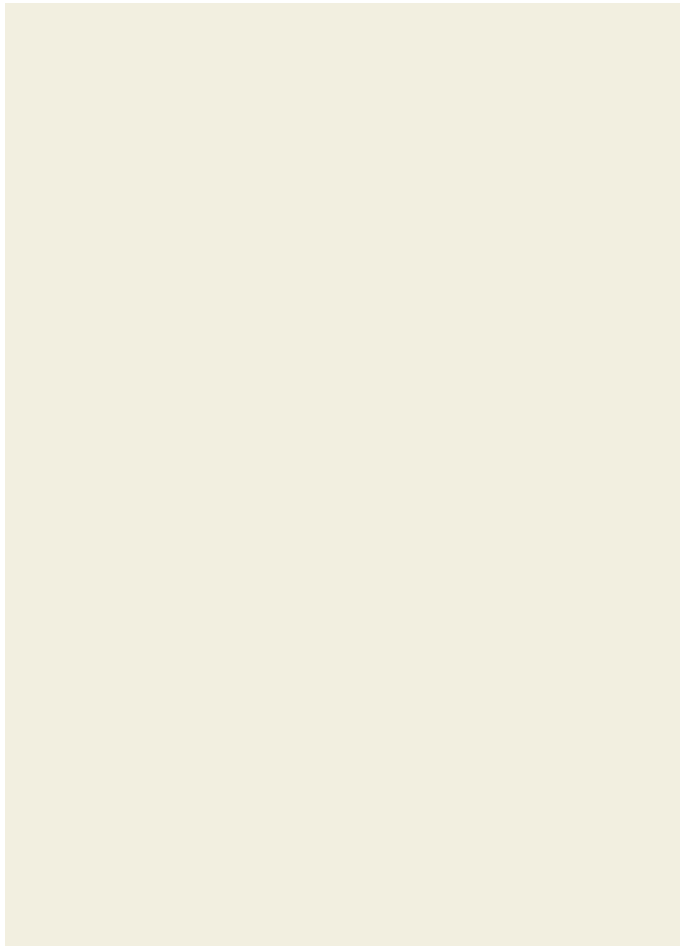
AVAILABLE NOW - This stunning two-bedroom mid-terrace property.

This extremely attractive mid-terrace cottage is situated in a desirable and convenient location within walking distance of all local amenities, and within the noted Ecclesbourne School catchment area. The property has the advantage of gas fired central heating and comprises: Lounge with feature fireplace, Large Dining Area/Fitted Kitchen with integrated fridge/freezer and space for washer/dryer, family bathroom, utility/ cloak area, and on the first floor there are two bedrooms.

Outside, on street parking to the front and a very nice, south facing, low maintenance rear garden with storage.

This property is situated within yards of the vast and ever growing local amenities that Duffield has to offer, along with the nearby train station, bus routes and close to major road networks.



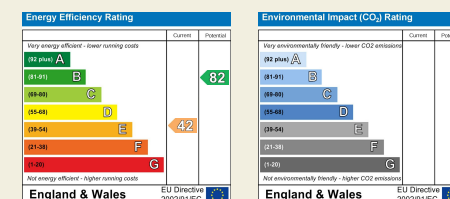




Duffield House
Town Street
Duffield
Derbyshire
DE56 4GD

T: 01332 843390

E: duffield@fletcherandcompany.co.uk
www.fletcherandcompany.co.uk



These particulars do not constitute an offer or a contract neither do they form part of an offer or contract. The vendor does not make or give and Messrs. Fletcher & Company nor any person employed has any authority to make or give any representation or warranty, written or oral, in relation to this property. Whilst we endeavour to make our sales details accurate and reliable, if there is any point which is of particular importance to you, please contact the office and we will be pleased to check the information for you, particularly if contemplating travelling some distance to view the property. None of the services or appliances to the property have been tested and any prospective purchasers should satisfy themselves as to their adequacy prior to committing themselves to purchase.

**Fletcher
& Company**