



1 Bed Apartment

2 Erasmus Drive
Derby
DE1 2EL

£850 Per Calendar Month

Fletcher
& Company

2 Erasmus Drive
Derby
DE1 2EL



- FULLY FURNISHED ONE BEDROOM APARTMENT • AVAILABLE IMMEDIATELY • WALKING DISTANCE TO THE TRAIN STATION AND DERBY CITY • CLOSE TO ALL AMENITIES AND TRANSPORT LINKS • VERY NICE FURNITURE • AVAILABLE LONG TERM • PARKING AVAILABLE ON STREET • COUNCIL TAX A BAND • EPC B • A VERY NICE AND HOMELY APARTMENT - VIEWING ADVISED

FULLY FURNISHED & AVAILABLE IMMEDIATELY - A one bed furnished apartment situated within the highly sought after Nightingale Quarter, within walking distance to Derby Centre.

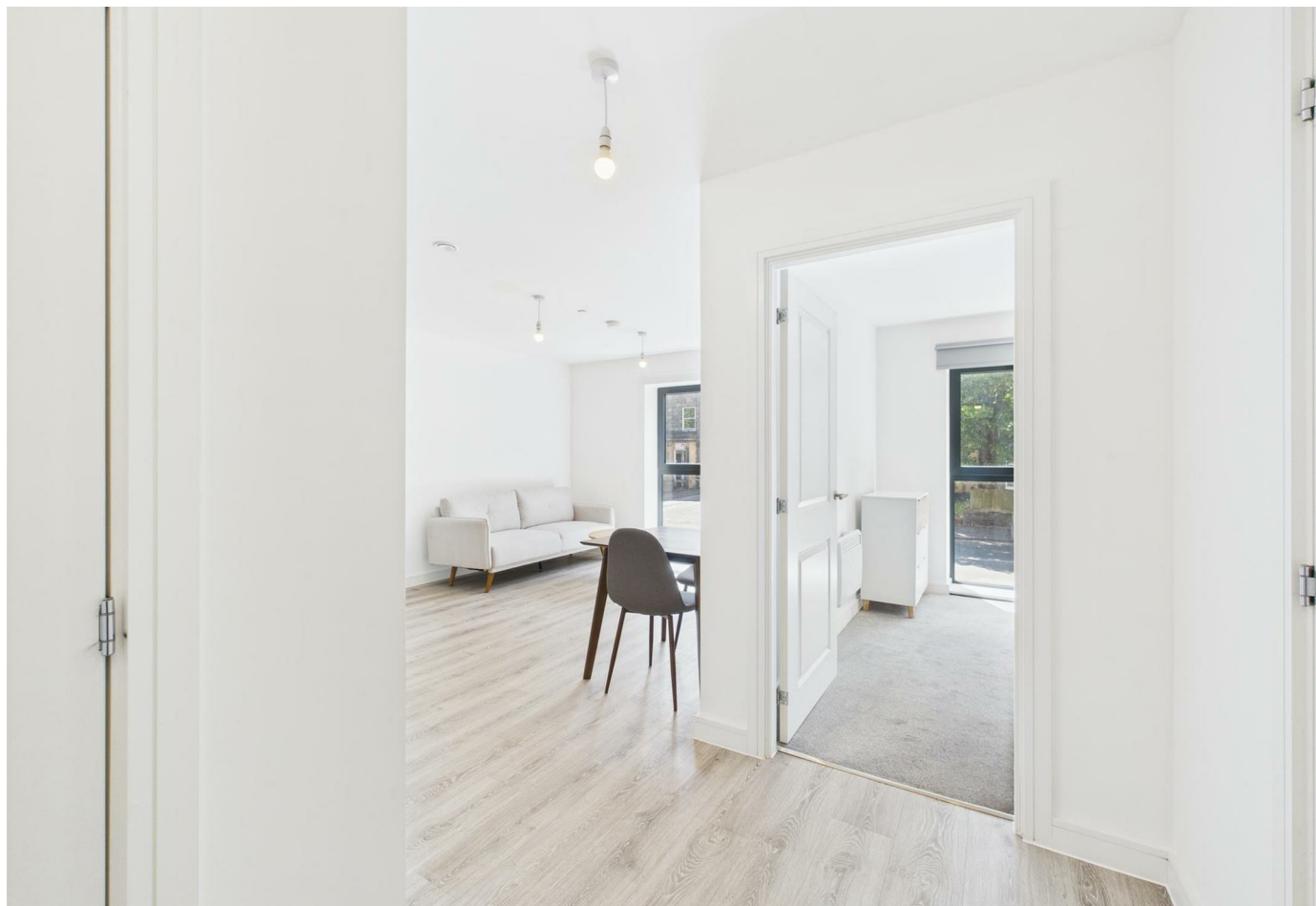
Situated on the second floor, this property benefits from an open plan lounge and kitchen area with large window offering natural daylight throughout and a modern finish.

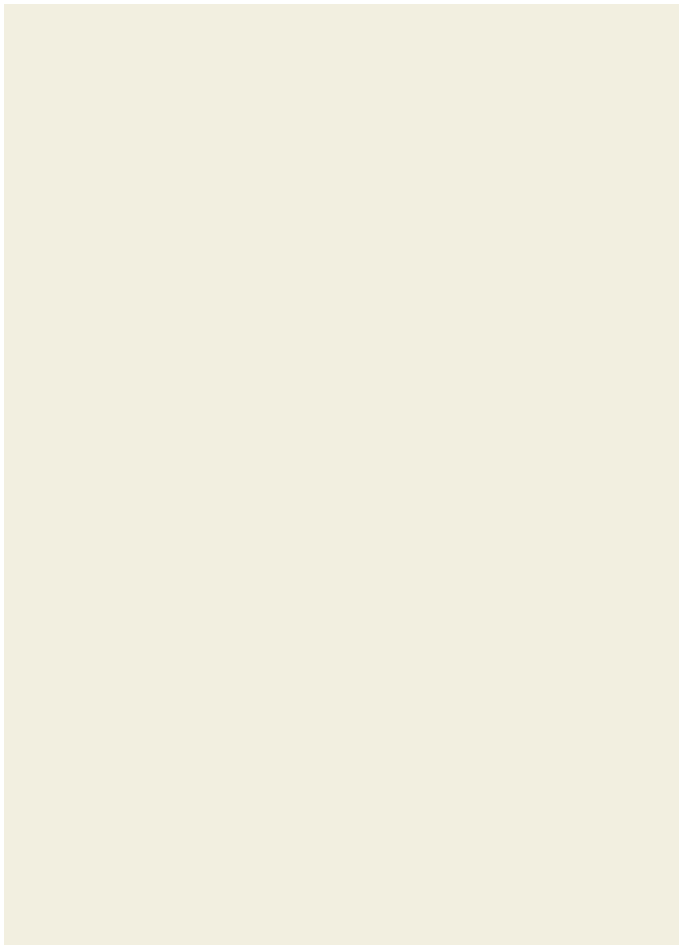
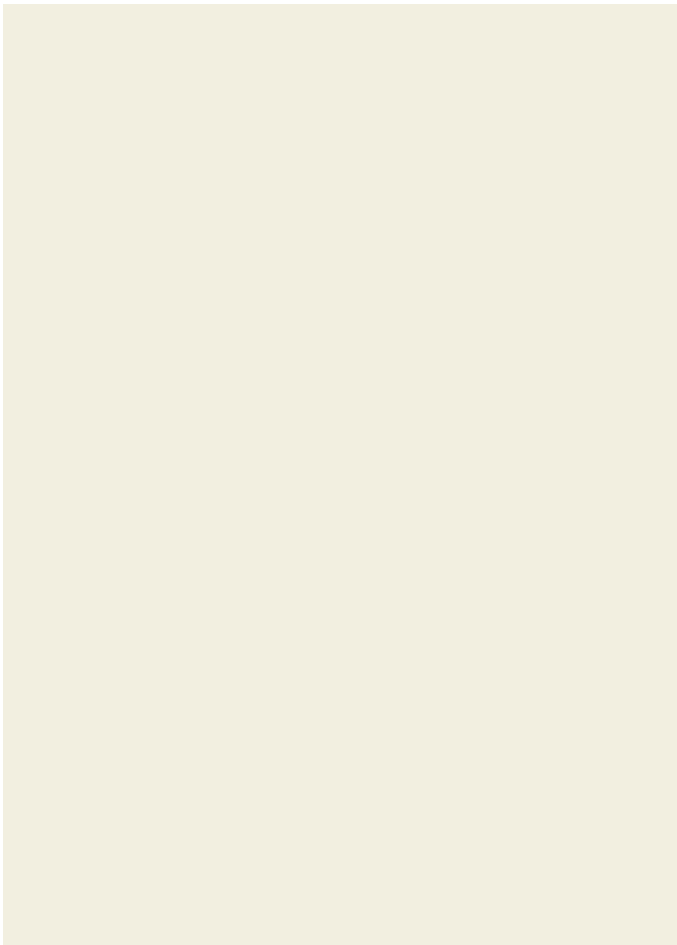
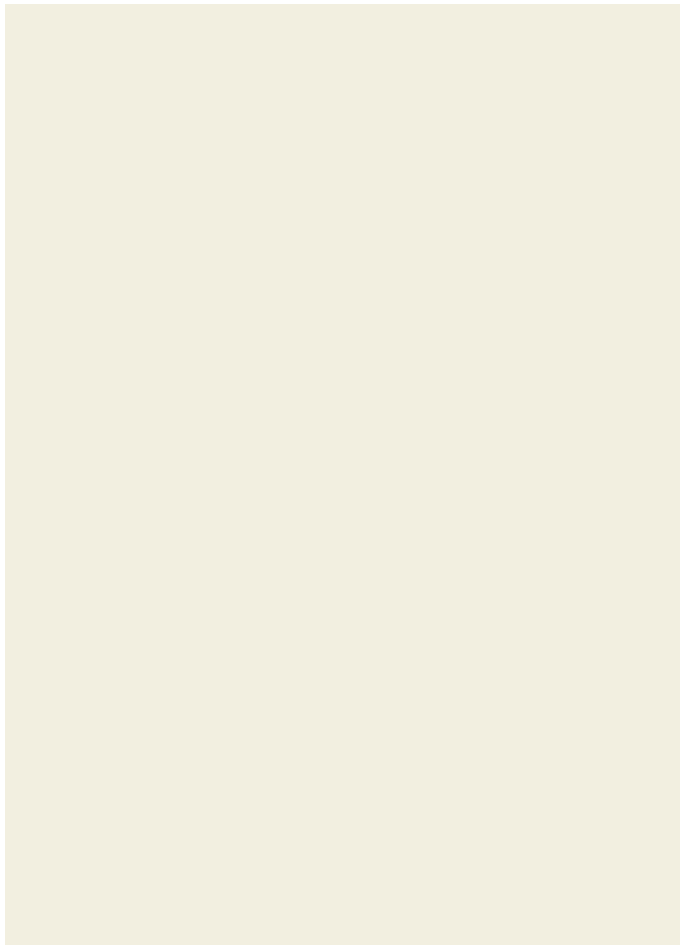
The kitchen has integrated appliances including dishwasher, washing machine with dryer, electric oven and hob plus freestanding freezer.

The double bedroom has fitted mirror-fronted double wardrobe and neutral carpet. The bathroom is tiled with shower over bath.

This apartment comes fully furnished, is available immediately, unfortunately no pets are permitted within this block and this is a one bedroom apartment so is only suitable for a professional or couple.

Available short, or long term.



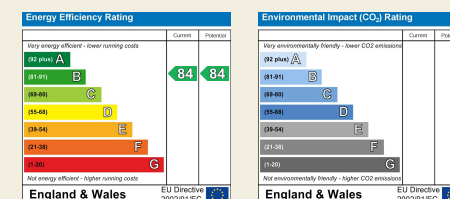




Duffield House
Town Street
Duffield
Derbyshire
DE56 4GD

T: 01332 843390

E: duffield@fletcherandcompany.co.uk
www.fletcherandcompany.co.uk



Fletcher
& Company

These particulars do not constitute an offer or a contract neither do they form part of an offer or contract. The vendor does not make or give and Messrs. Fletcher & Company nor any person employed has any authority to make or give any representation or warranty, written or oral, in relation to this property. Whilst we endeavour to make our sales details accurate and reliable, if there is any point which is of particular importance to you, please contact the office and we will be pleased to check the information for you, particularly if contemplating travelling some distance to view the property. None of the services or appliances to the property have been tested and any prospective purchasers should satisfy themselves as to their adequacy prior to committing themselves to purchase.