



2 Bed Flat/Apartment

46 Girton Way
Mickleover
Derby
DE3 9EA

£825 Per Calendar Month

Fletcher
& Company

46 Girton Way
Derby
DE3 9EA



- AVAILABLE IMMEDIATELY - GROUND FLOOR APARTMENT
- RE-DECORATED & NEW CARPET
- TWO BEDROOMS - EN-SUITE SHOWER ROOM TO MASTER BEDROOM
- OPEN PLAN KITCHEN LIVING AREA
- ALLOCATED PARKING
- COUNCIL TAX A BAND, EPC B RATING
- CLOSE TO DERBY ROYAL HOSPITAL
- CLOSE TO AMENITIES, AND ROAD NETWORKS
- LONG TERM LETS AVAILABLE
- THIS PROPERTY IS READY TO GO

AVAILABLE NOW - GROUND FLOOR APARTMENT - UNFURNISHED

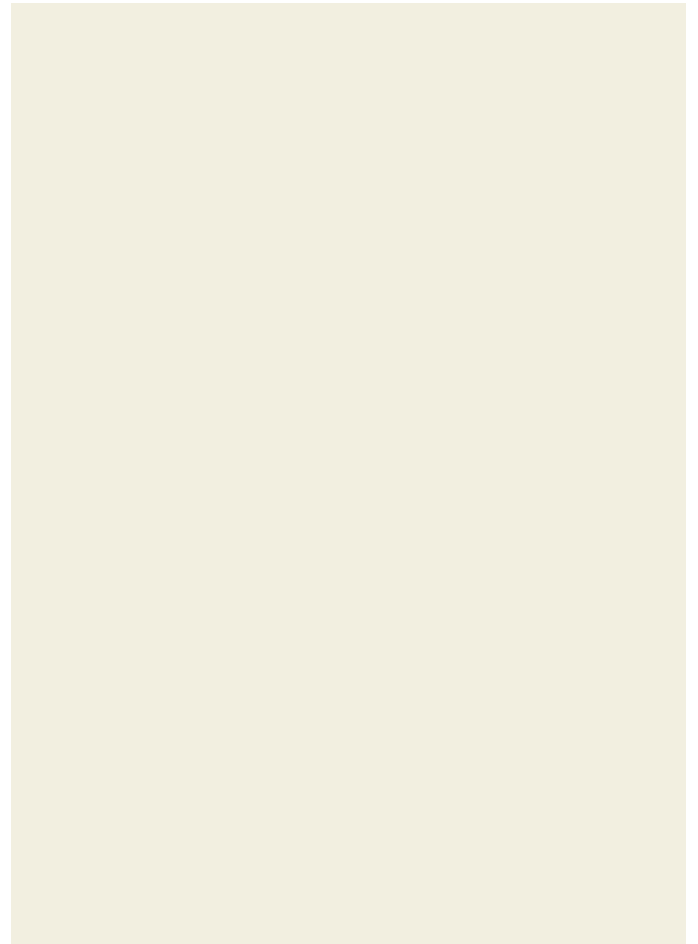
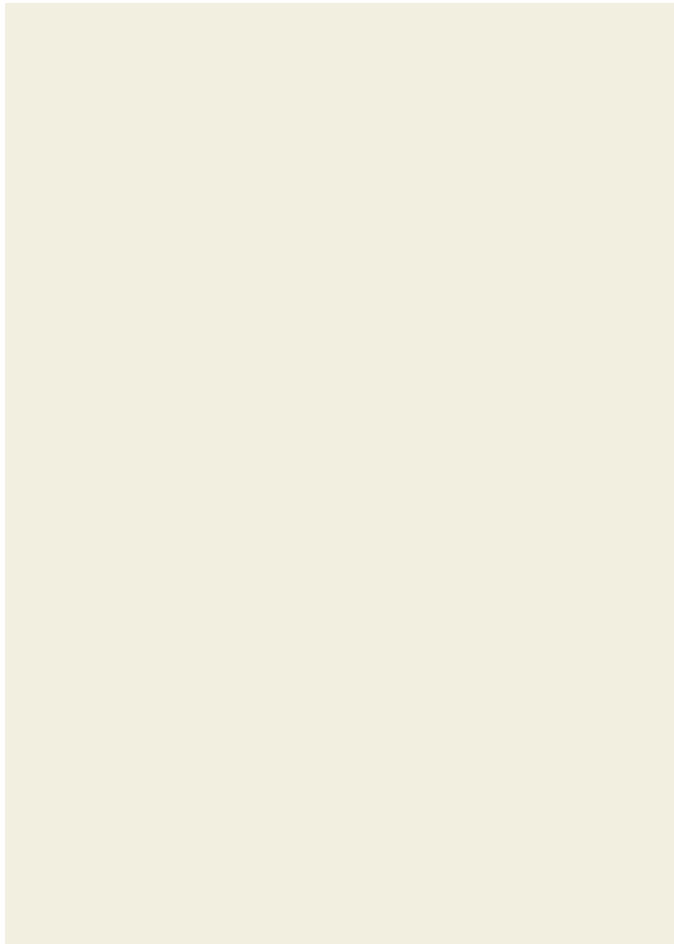
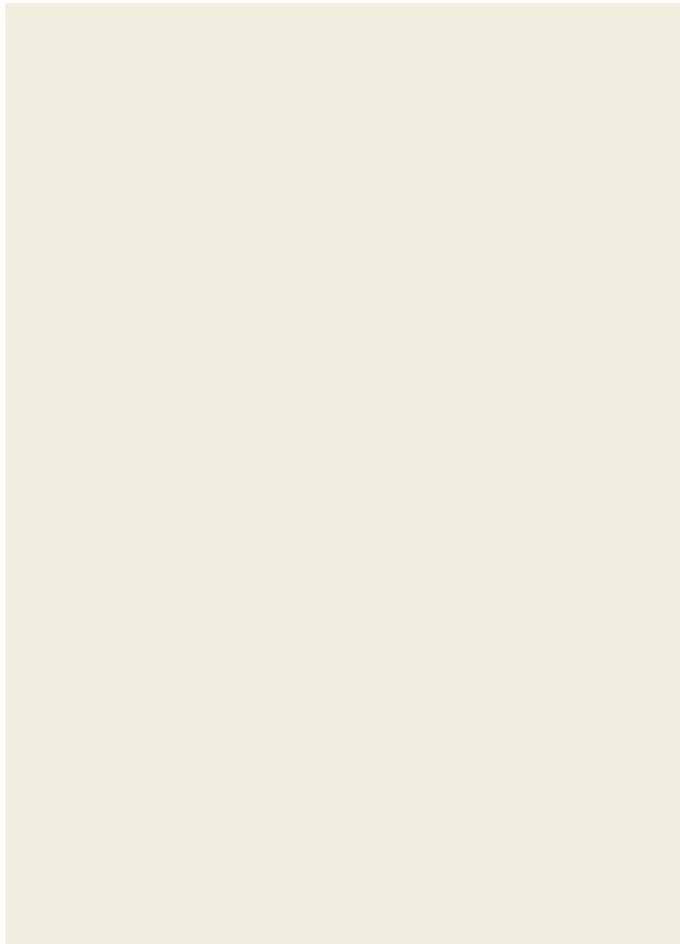
A freshly decorated two-bedroom apartment that benefits further from gas central heating, Upvc double-glazed situate conveniently close to the Royal Derby Hospital and within easy walking distance of Mickleover Village.

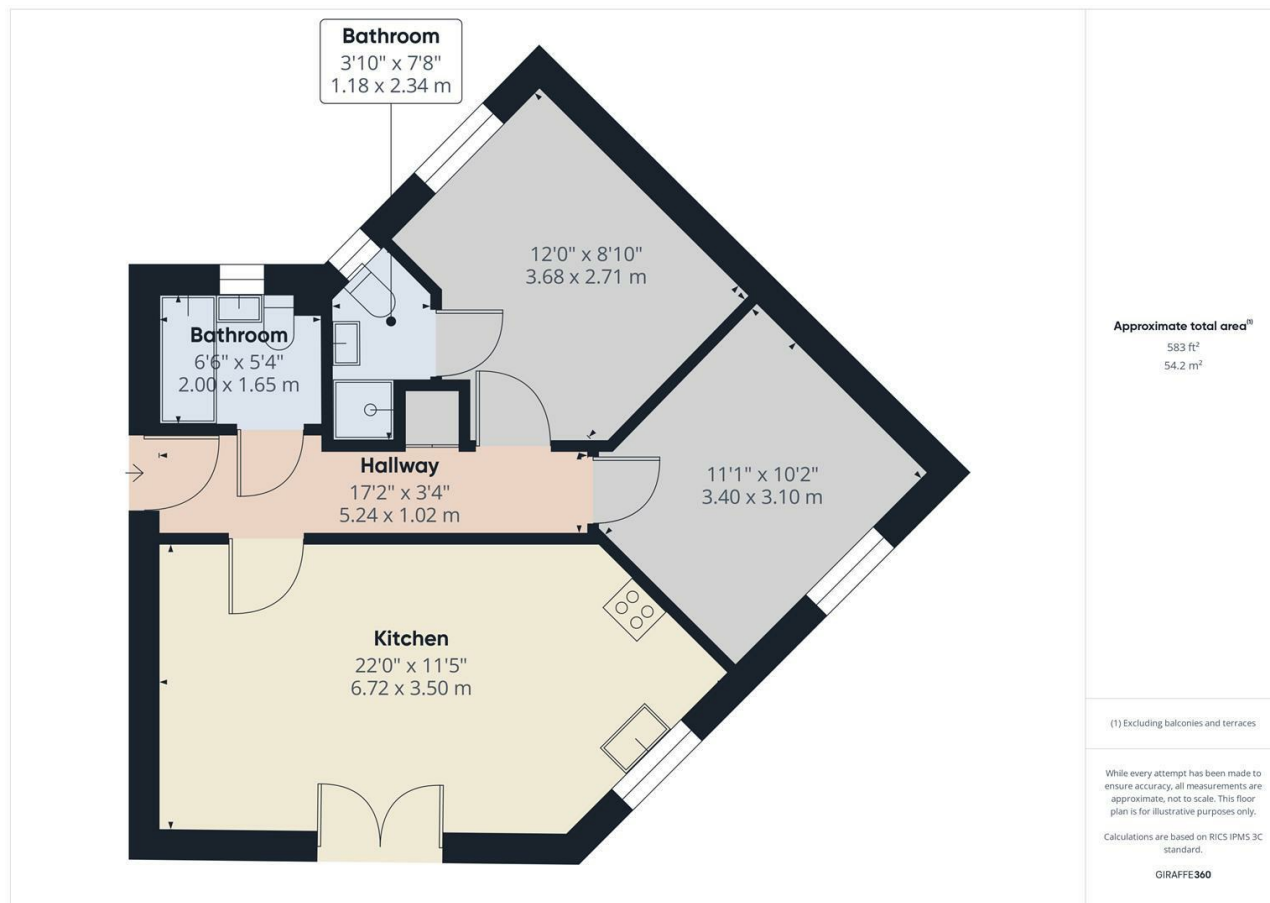
The apartment comprises of; entrance hallway leading to reception hall with intercom, living room with lounge / dining area and fitted kitchen with space for washing machine / dryer - fridge / freezer is available, two bedrooms, en-suite shower room to master, and a spacious family bathroom,

As well as being newly decorated, the apartment has also had some newly laid carpet, further enhancing the look and appeal of this property.

Outside, there is allocated parking for one vehicle as well as limited parking for visitors. There are also pleasant communal gardens.



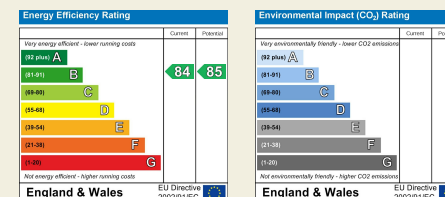




Duffield House
Town Street
Duffield
Derbyshire
DE56 4GD

T: 01332 843390

E: duffield@fletcherandcompany.co.uk
www.fletcherandcompany.co.uk



Fletcher
& Company

These particulars do not constitute an offer or a contract neither do they form part of an offer or contract. The vendor does not make or give and Messrs. Fletcher & Company nor any person employed has any authority to make or give any representation or warranty, written or oral, in relation to this property. Whilst we endeavour to make our sales details accurate and reliable, if there is any point which is of particular importance to you, please contact the office and we will be pleased to check the information for you, particularly if contemplating travelling some distance to view the property. None of the services or appliances to the property have been tested and any prospective purchasers should satisfy themselves as to their adequacy prior to committing themselves to purchase.