



3 Bed House - Townhouse

12 Mitchells Close

Etwall

Derby

DE65 6PW

£1,200 Per Calendar Month

Fletcher
& Company

12 Mitchells Close Derby DE65 6PW



- RE-DECORATED THROUGHOUT WITH NEW CARPETS • AVAILABLE IMMEDIATELY ON A LONG TERM BASIS • IMMACULATE THREE BEDROOM THREE STOREY PROPERTY IN POPULAR VILLAGE LOCATION • MASTER BEDROOM WITH DRESSING AREA & EN-SUITE • GARAGE & DRIVEWAY PARKING FOR TWO CARS • GROUND FLOOR W/C WITH CLOAKROOM • SPACIOUS LIVING AREA WITH NICE VIEW OVER THE REAR GARDEN • CLOSE TO JOHN PORT SCHOOL, LOCAL AMENITIES AND MAJOR ROAD NETWORKS • THREE DOUBLE BEDROOMS WITH BUILT IN/ IN BUILT STORAGE • LONG TERM LETS AVAILABLE

RE-DECORATED AND NEW CARPETS THROUGHOUT - An immaculately presented three bedroom property in the sought after village of Etwell, Derbyshire.

Situated with a quiet cul-de-sac on Mitchells Close is this vastly improved three bedroom, three storey town house.

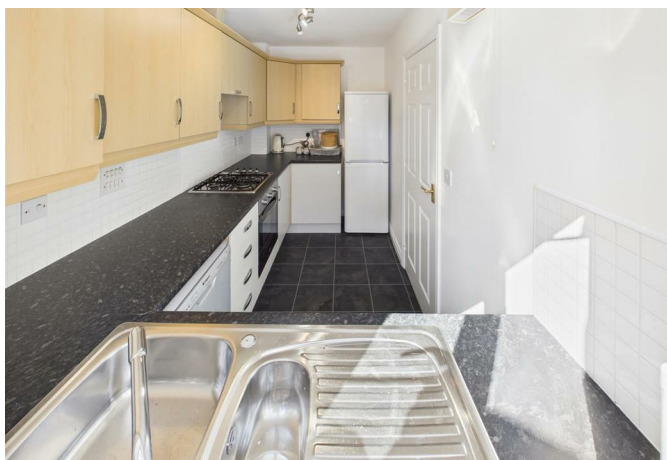
The entrance hallway leads to a generously sized living room which also offers superb views out onto the rear garden and fields beyond, there is also a storage cupboard, downstairs w/c and nicely fitted kitchen with appliances off the entrance hallway.

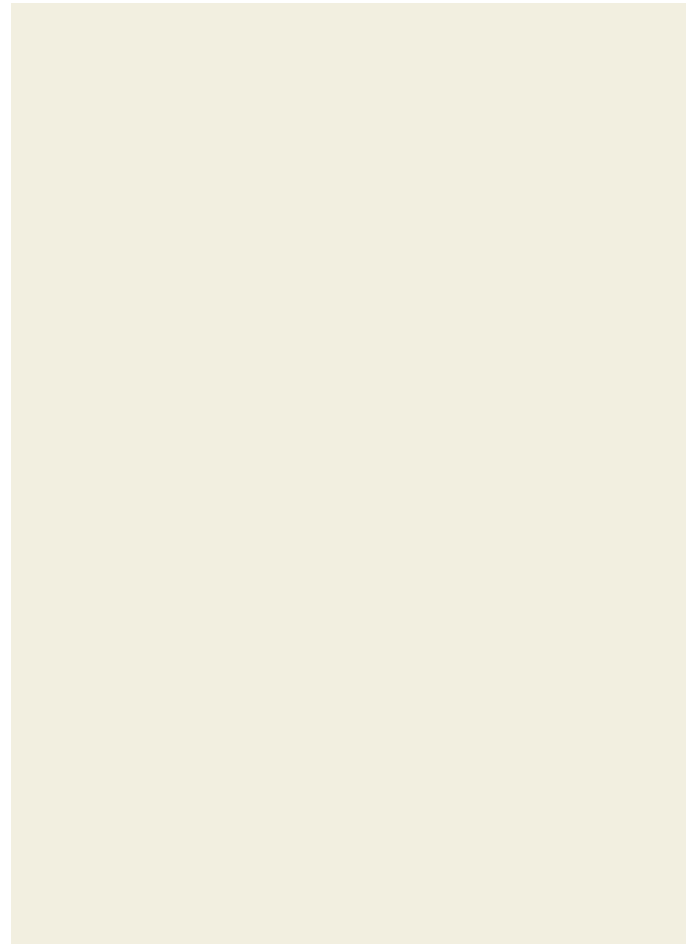
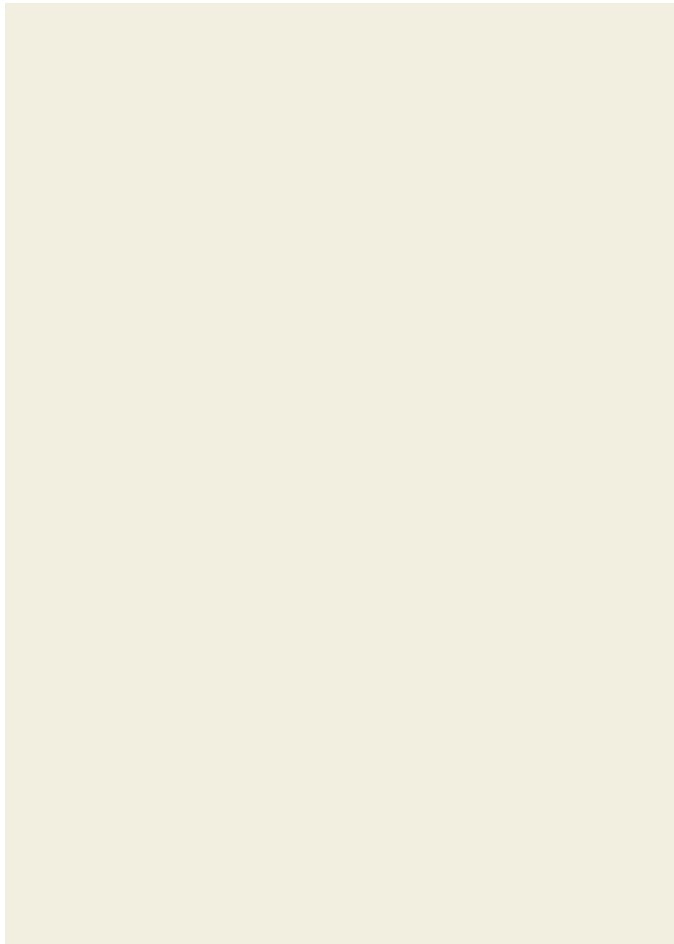
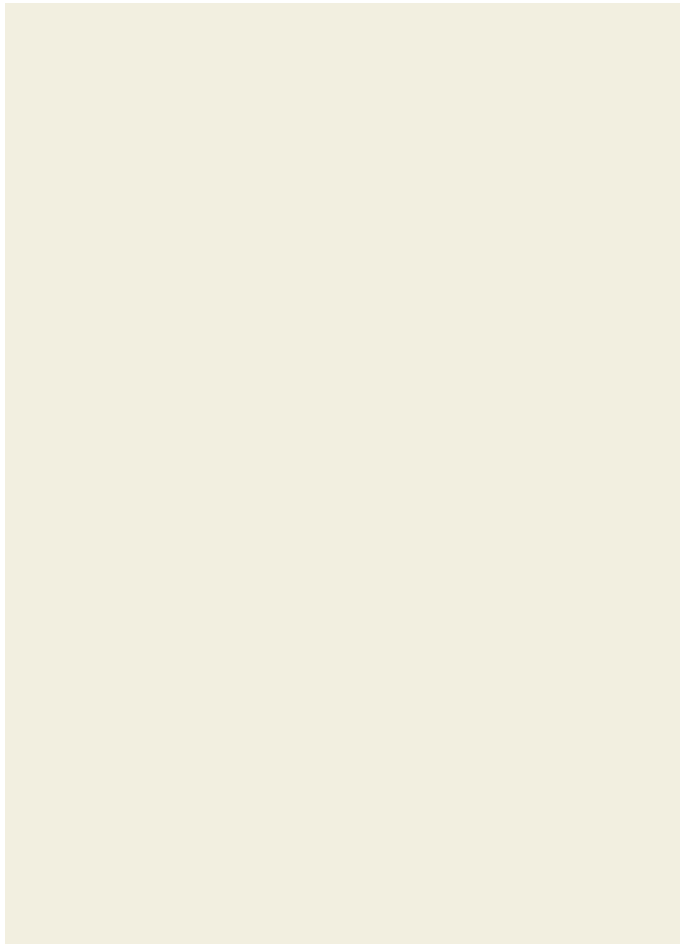
Stairs leading to the first floor where you will find two double bedrooms, both with in-built storage, and a spacious family bathroom.

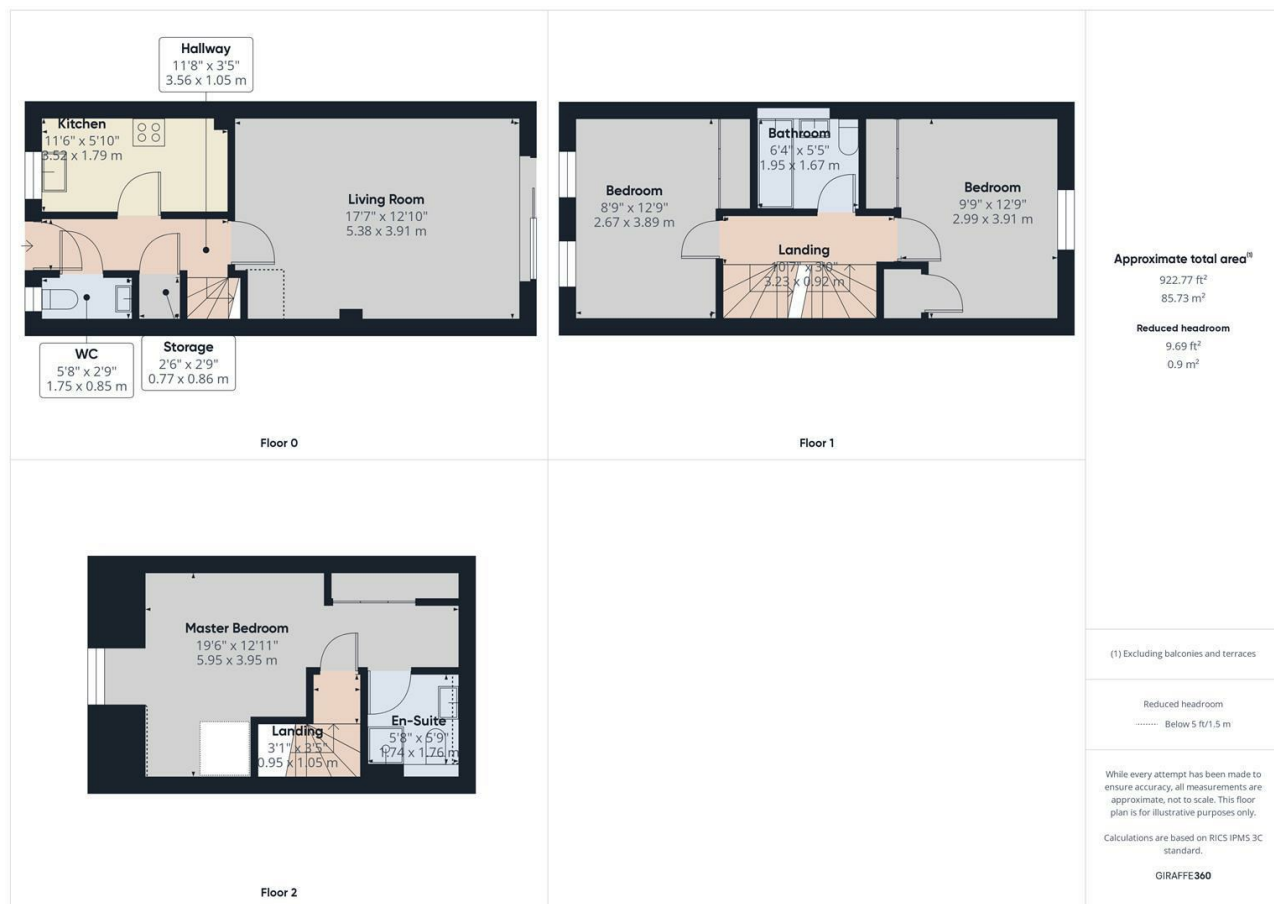
Stairs leading to the second floor leads to the master bedroom with dressing area and en-suite. This bedroom occupies the whole of the top floor, offering high levels of space and storage making it spacious and practical. This bedroom boasts a good amount of built in wardrobes and drawers.

To the rear of the property is an enclosed garden area, enjoying a quiet spot and nice unspoilt views beyond making it a superb place to sit and relax at your leisure. This superb property also has driveway parking for two vehicle and a garage which is suitable for storage or storage of a small vehicle.

This property is available immediately, and on a long term basis.



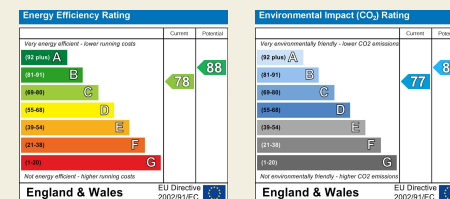




Duffield House
Town Street
Duffield
Derbyshire
DE56 4GD

T: 01332 843390

E: duffield@fletcherandcompany.co.uk
www.fletcherandcompany.co.uk



Fletcher
& Company

These particulars do not constitute an offer or a contract neither do they form part of an offer or contract. The vendor does not make or give and Messrs. Fletcher & Company nor any person employed has any authority to make or give any representation or warranty, written or oral, in relation to this property. Whilst we endeavour to make our sales details accurate and reliable, if there is any point which is of particular importance to you, please contact the office and we will be pleased to check the information for you, particularly if contemplating travelling some distance to view the property. None of the services or appliances to the property have been tested and any prospective purchasers should satisfy themselves as to their adequacy prior to committing themselves to purchase.