



4 Bed House

34 Woodlands Lane, Quarndon, Derby DE22 5JU
Offers Around £695,000 Freehold



4



2



2



**Fletcher
& Company**

www.fletcherandcompany.co.uk

- Stunning Contemporary Designed Home
- Ecclesbourne School Catchment Area
- Beautiful Southerly Countryside Views
- Lounge with Bi Folding Doors
- Magnificent Living Kitchen/Dining Room with Bi Fold Doors
- Playroom & Double Bedroom /Study
- Three Double Bedrooms & Two Bathrooms
- Private Garden Backing onto Open Fields/Countryside – Southerly Views
- Large Block Paved Driveway for Four/five Vehicles
- Viewing Absolutely Essential

ECCLESBOURNE SCHOOL CATCHMENT AREA – This stunning contemporary designed home offers a perfect blend of modern living and serene countryside charm. The property has been professionally renovated and thoughtfully improved throughout, ensuring a high standard of comfort and style.

The heart of the home is undoubtedly the magnificent living kitchen/dining room, which boasts bi-fold doors that seamlessly connect the indoor space with the private garden. This feature not only enhances the natural light but also allows for breathtaking views of the beautiful southerly countryside, creating an inviting atmosphere for family gatherings or quiet evenings at home.

The private garden, which backs onto open fields and the stunning countryside, provides a tranquil retreat where one can unwind and enjoy the beauty of nature.

This exceptional home is perfect for those seeking a peaceful lifestyle while still being within easy reach of local amenities and transport links. With its contemporary design, spacious layout, and idyllic setting, this property is a rare find in the desirable area of Quarndon.

The Location

The property is situated in the very sought after village of Quarndon, some three miles north of Derby City centre and has a cricket ground and noted Joiners Arms public house. It has the benefit of a noted primary school (The Curzon Church of England) and is in the catchment area for the noted Ecclesbourne School in Duffield. The popular village of Duffield lies approximately 2 miles north and has a wide range of amenities. Golf courses at Duffield and Kedleston. The famous old market town of Ashbourne lies approximately 13 miles to the west and is known as the gateway to the Peak District National Park.

Accommodation

Ground Floor

Entrance Porch

8'5" x 4'7" (2.57 x 1.41)

With entrance door, vaulted ceiling, radiator, double glazed window with fitted blind and internal door giving access to hallway.

Hallway

9'4" x 6'3" (2.87 x 1.93)

With radiator and staircase leading to first floor.

Lounge

18'2" x 9'8" (5.55 x 2.97)

With radiator, open square archway leading to living kitchen/dining room, independant Ubiquity wifi access point, double glazed bifolding doors opening onto composite, raised deck terrace and delightful southerly countryside views.



Playroom

9'10" x 10'2" (3.00 x 3.12)

With radiator and double glazed window with fitted blind.



Inner Lobby

7'3" x 7'2" (2.23 x 2.19)

With understairs storage cupboard.

Walk-In Storage Cupboard

7'5" x 3'4" (2.27 x 1.03)

Double Bedroom Four/Study

11'4" x 9'10" (3.47 x 3.00)

With radiator and two double glazed windows both having fitted blinds.



Living Kitchen/Dining Room

Dining Area

15'5" x 11'5" (4.71 x 3.48)

With radiator, featured decorative chimney breast and wide open square archway leading to kitchen area.



Kitchen Area

18'1" x 13'6" (5.53 x 4.13)

With central fitted kitchen island with one and half inset sink with chrome mixer tap and useful storage cupboards underneath, pop up plug socket, including an integrated dishwasher and quartz work tops, a further range of fitted wall and base fitted cupboards providing storage again with matching quartz worktops, built-in down draught induction hob with vented extractor hood, built-in electric fan assisted oven, built-in combination microwave oven with warming plate drawer underneath, large integrated fridge, large integrated freezer, featured large double glazed lantern style window, underfloor heating, open square archway leading into dining area and lounge area, spotlights to ceiling, Bluetooth ceiling speakers, featured double glazed bi folding doors opening on to raised composite, decked terrace area and delightful southerly countryside views.



Utility/Cloakroom

7'1" x 6'11" (2.18 x 2.13)

With inset circular stainless steel sink unit with chrome mixer tap, tile splashbacks, fitted worktops, fitted base cupboard, plumbing for automatic washing machine, space for tumble dryer, radiator, low level WC, extractor fan and double glazed window with fitted blind.



First Floor Landing

7'5" x 7'3" (2.27 x 2.23)

With double glazed window with fitted blind and delightful far-reaching views.

Double Bedroom One

15'8" x 9'10" (4.79 x 3.01)

With double wardrobe with sliding doors, vaulted ceilings with two electric double glazed Velux skylight windows, radiator, delightful far-reaching views, bespoke fitted headboard and double glazed sliding patio door opening onto sun balcony.



Balcony

9'11" x 3'1" (3.03 x 0.96)

With decked floor, wall lights and attractive glass balustrade enjoying fine views across the valley and beyond.



En-Suite

6'11" x 6'3" (2.11 x 1.92)

With double shower cubicle with chrome shower, twin wash basins both having chrome fittings with fitted storage cupboards underneath, low level WC, Bluetooth mirror to connect a device to play music/bathroom cabinet, spotlights to ceiling, radiator and double glazed window with fitted blind.



Double Bedroom Two

17'8" x 10'9" (5.40 x 3.28)

With radiator, built-in storage cupboard, double glazed window with fitted blind with aspect to front and double glazed sliding patio door opening onto raised composite decked area with delightful far-reaching views.



Sun Balcony

16'0" x 6'9" (4.90 x 2.08)

With decked floor and enjoying fine views across the valley and beyond.



Double Bedroom Three

11'3" x 9'8" (3.44 x 2.97)

With radiator and two double glazed windows both having fitted blinds.



Shower Room/Bathroom

7'3" x 7'2" (2.23 x 2.19)

With double shower cubicle with chrome shower, fitted wash basin with fitted cupboard underneath, low level WC, radiator, extractor fan, spotlights to ceiling and double glazed window with fitted blind.



Private Garden

Being of a major asset to the sale of this particular property is it's manageable rear garden backing directly onto open fields and countryside and it enjoys a warm, southerly aspect with stunning far-reaching views. The garden has been designed for low maintenance including a shaped lawn with a varied selection of shrubs, plants and large composite decked terrace area providing a pleasant sitting out and entertaining space and enjoying the far-reaching views.



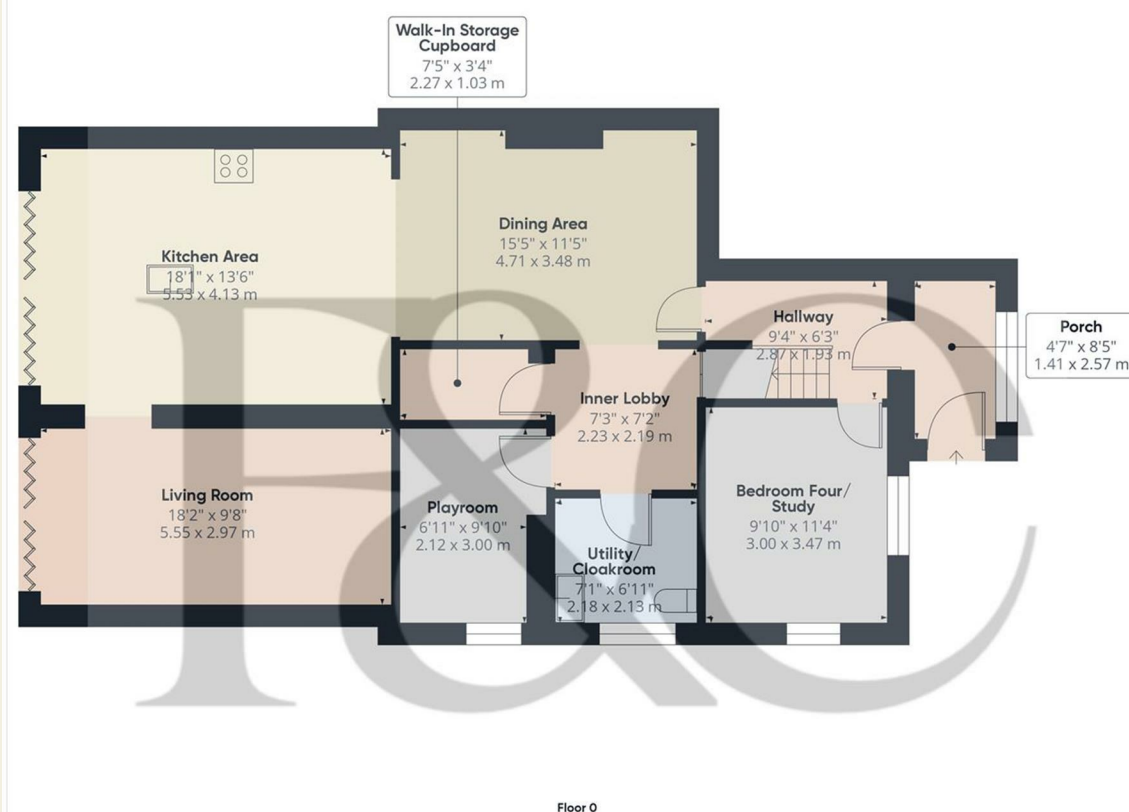
Large Driveway

A double width, block paved driveway provides car standing spaces for approximately four/five cars.



Council Tax Band E





Approximate total area⁽¹⁾
1018.37 ft²
94.61 m²

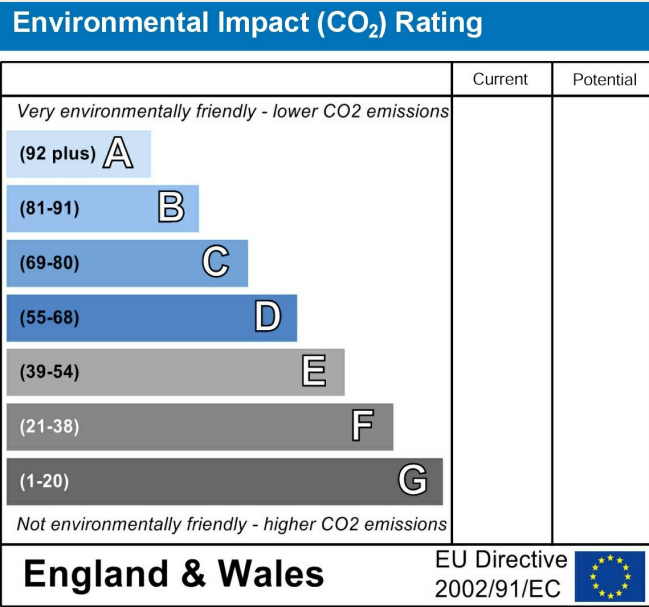
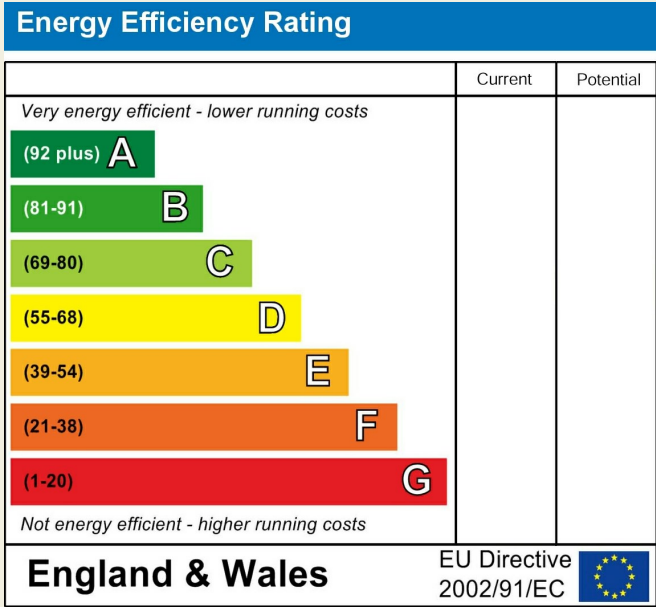
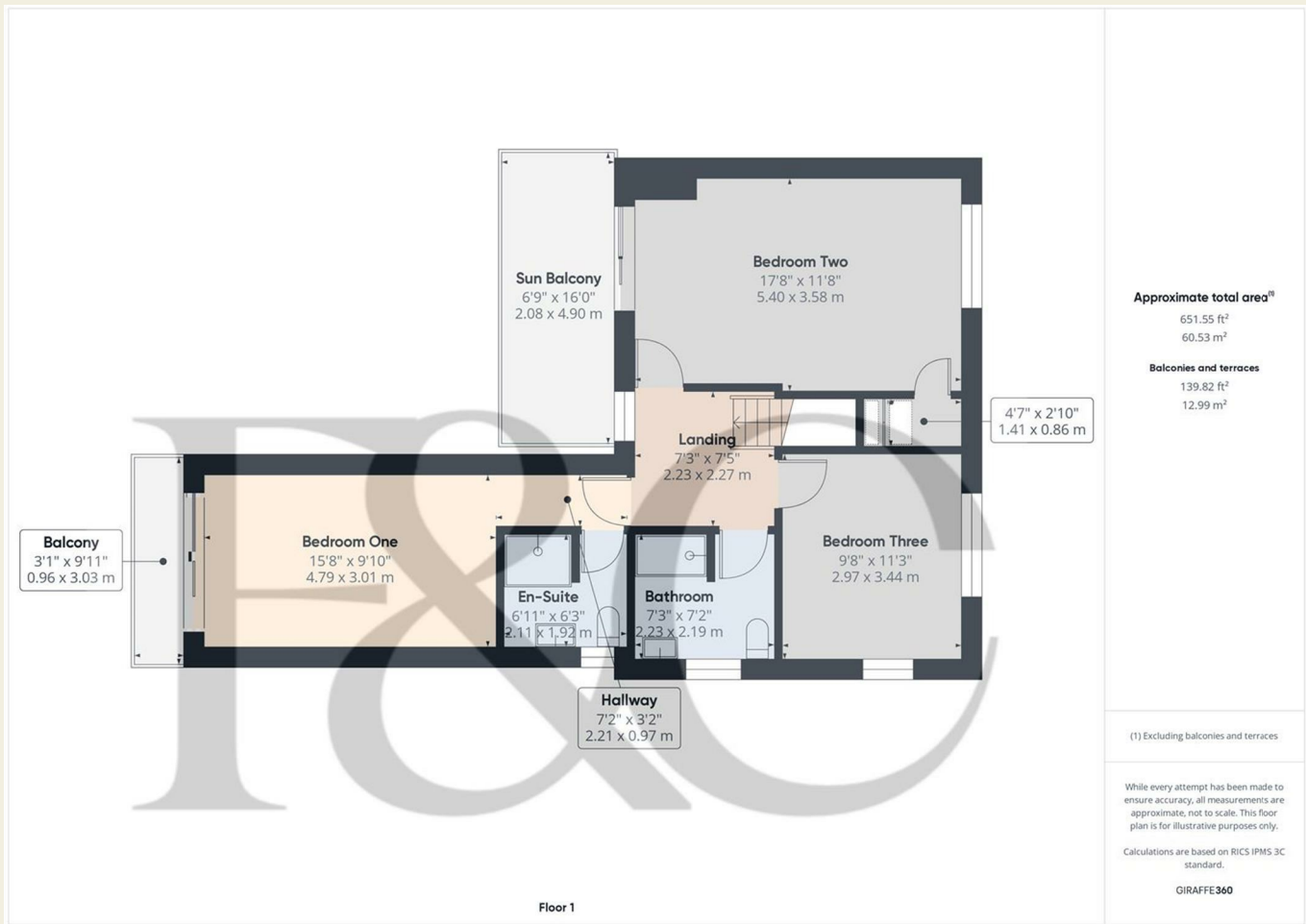
(1) Excluding balconies and terraces

While every attempt has been made to ensure accuracy, all measurements are approximate, not to scale. This floor plan is for illustrative purposes only.

Calculations are based on RICS IPMS 3C standard.

GIRAFFE360

These particulars do not constitute an offer or a contract neither do they form part of an offer or contract. The vendor does not make or give and Messrs. Fletcher & Company nor any person employed has any authority to make or give any representation or warranty, written or oral, in relation to this property. Whilst we endeavour to make our sales details accurate and reliable, if there is any point which is of particular importance to you, please contact the office and we will be pleased to check the information for you, particularly if contemplating travelling some distance to view the property. None of the services or appliances to the property have been tested and any prospective purchasers should satisfy themselves as to their adequacy prior to committing themselves to purchase.



These particulars do not constitute an offer or a contract neither do they form part of an offer or contract. The vendor does not make or give and Messrs. Fletcher & Company nor any person employed has any authority to make or give any representation or warranty, written or oral, in relation to this property. Whilst we endeavour to make our sales details accurate and reliable, if there is any point which is of particular importance to you, please contact the office and we will be pleased to check the information for you, particularly if contemplating travelling some distance to view the property. None of the services or appliances to the property have been tested and any prospective purchasers should satisfy themselves as to their adequacy prior to committing themselves to purchase.