



1 Bed Cottage

4 Quarry Cottages The Bridge, Milford, Belper DE56 0RR
Price £149,950 Freehold



1



1



1



E

Fletcher
& Company

www.fletcherandcompany.co.uk

- Charming Grade II End Stone Cottage
- Convenient for Duffield, Makeney & Belper
- Gas Central Heating
- Lounge with Stone Fireplace
- Kitchen & Utility
- One Double Bedroom & Dressing Room
- Bathroom with Shower
- Tiered Garden
- Lots of Character & Charm
- Ideal For First Time Buyer or Investor (Rental Income £695 per month)

CHARMING COTTAGE FOR FIRST TIME BUYER/INVESTOR - A one bedroom stone cottage of style and character located within this sought after conservation area situated between Duffield and Milford.

The Location

The cottage is located close to Makeney and is noted for its Holly Bush Inn and Makeney Hall with its splendid grounds. The nearby villages of Milford, Holbrook and Duffield offer an excellent range of amenities including noted primary schools, a varied selection of shops and a regular bus service. Belper, a thriving town is situated only 2 miles away and offers a more comprehensive range of facilities and leisure facilities. Chevin golf course located in Duffield is highly regarded and delightful walks can be found in the neighbouring hills. Other places of interest is Carsington water and the famous market town of Ashbourne known as the gateway to the Peak District. Nearby transport links include the A6 and A38 which leads to the M1 motorway.

Accommodation

Ground Floor

Lounge/Dining Room

13'2" x 12'0" (4.02 x 3.66)

With stone fireplace with raised tiled hearth, radiator, staircase leading to first floor, half glazed entrance door and sash window with internal secondary double glazing.



Kitchen

12'4" x 4'10" (3.77 x 1.48)

With sink with chrome mixer tap, wall and base cupboards, worktops, built-in five ring gas hob with extractor hood over, built-in electric fan assisted oven, slimline dishwasher, quarry tiled floor, exposed stonework, beams to ceiling, character multipaned window to front with internal secondary double glazing, open archway leading into utility room and internal pine latched door.



Utility

9'8" x 7'1" (2.95 x 2.17)

With worktop, fitted base cupboard, plumbing for automatic washing machine, space for tumble dryer, radiator, tiled flooring, exposed stonework, beams to ceiling, multipaned window, half glazed door giving access to garden and internal pine latched door.



First Floor

Double Bedroom

13'7" x 12'2" (4.16 x 3.72)

With high ceilings, radiator, exposed stonework, sash period style window to front with internal secondary double glazing and internal pine latched door.



Inner Lobby

With built-in storage cupboard.

Dressing Room

8'11" x 6'11" (2.73 x 2.12)

With pine floor, radiator pine panelled ceiling with lights, beam, radiator, stonework, multipaned character window and internal pine panelled door.



Bathroom

9'11" x 4'7" (3.04 x 1.41)

With bath with shower and shower screen door, pedestal wash handbasin, low level WC, tiled splash-backs, exposed wood floor, radiator, high ceilings, sash period style window with internal secondary double glazing, radiator, storage cupboard and pine panelled door.



Fore-Garden

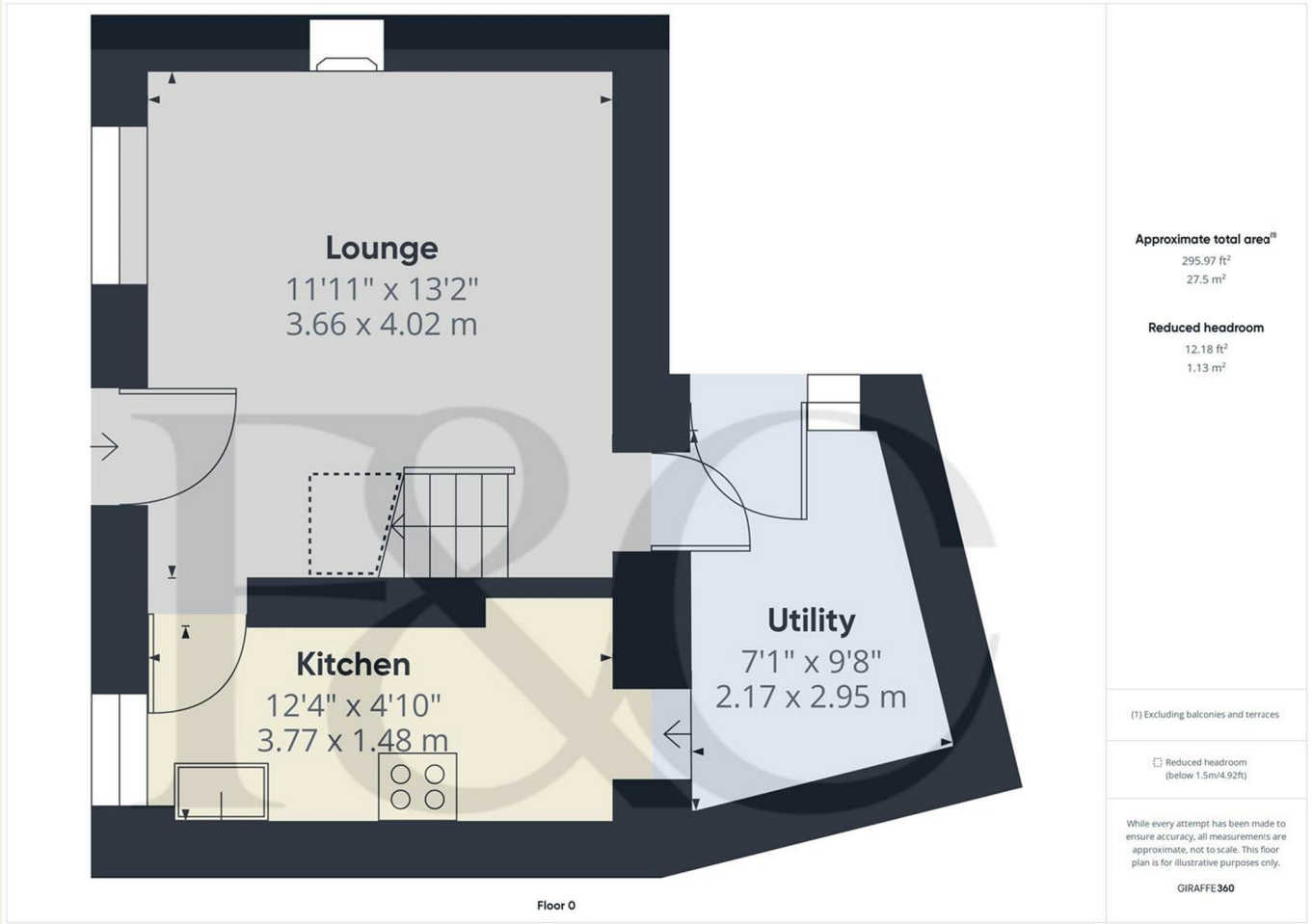
The property is set back from the pavement edge behind a low maintenance natural stone fore-garden with artificial turf.

Rear Garden

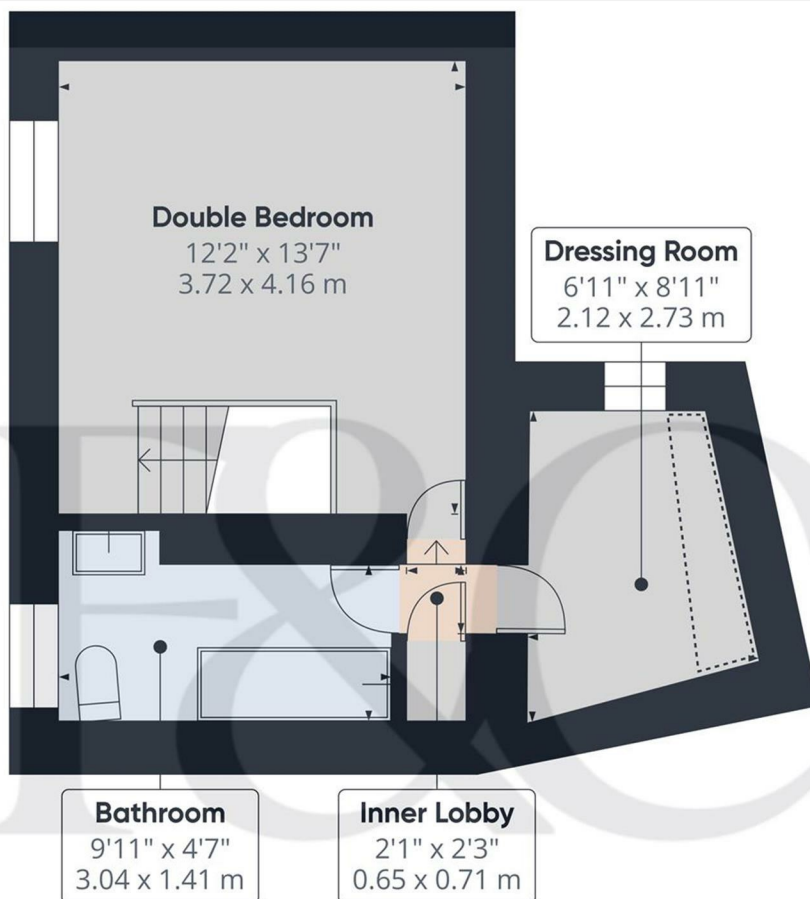
Immediately from the utility room door is a small yard garden with artificial turf and stone steps leading to a tiered garden with stone walling, enjoying views across Milford and beyond.



Council Tax - B
Amber Valley



These particulars do not constitute an offer or a contract neither do they form part of an offer or contract. The vendor does not make or give and Messrs. Fletcher & Company nor any person employed has any authority to make or give any representation or warranty, written or oral, in relation to this property. Whilst we endeavour to make our sales details accurate and reliable, if there is any point which is of particular importance to you, please contact the office and we will be pleased to check the information for you, particularly if contemplating travelling some distance to view the property. None of the services or appliances to the property have been tested and any prospective purchasers should satisfy themselves as to their adequacy prior to committing themselves to purchase.



Floor 1

Approximate total area⁽¹⁾
266.73 ft²
24.78 m²

Reduced headroom
11.32 ft²
1.05 m²


(1) Excluding balconies and terraces

Reduced headroom
(below 1.5m/4.92ft)


While every attempt has been made to ensure accuracy, all measurements are approximate, not to scale. This floor plan is for illustrative purposes only.

GIRAFFE360

Energy Efficiency Rating

	Current	Potential
Very energy efficient - lower running costs		
(92 plus) A		88
(81-91) B		
(69-80) C		
(55-68) D		
(39-54) E	48	
(21-38) F		
(1-20) G		
Not energy efficient - higher running costs		
England & Wales	EU Directive 2002/91/EC	

Environmental Impact (CO₂) Rating

	Current	Potential
<i>Very environmentally friendly - lower CO2 emissions</i>		
(92 plus) A		
(81-91) B		
(69-80) C		
(55-68) D		
(39-54) E		
(21-38) F		
(1-20) G		
<i>Not environmentally friendly - higher CO2 emissions</i>		
England & Wales		EU Directive 2002/91/EC 

These particulars do not constitute an offer or a contract neither do they form part of an offer or contract. The vendor does not make or give and Messrs. Fletcher & Company nor any person employed has any authority to make or give any representation or warranty, written or oral, in relation to this property. Whilst we endeavour to make our sales details accurate and reliable, if there is any point which is of particular importance to you, please contact the office and we will be pleased to check the information for you, particularly if contemplating travelling some distance to view the property. None of the services or appliances to the property have been tested and any prospective purchasers should satisfy themselves as to their adequacy prior to committing themselves to purchase.