



3 Bed House - Link Detached

The Gables Hulland Ward, Ashbourne DE6 3EF

Offers Over £350,000 Freehold



3



2



2



D

**Fletcher
& Company**

www.fletcherandcompany.co.uk

- Double Fronted Link-Detached Cottage
- Gas Central Heating & Double Glazing
- Lounge & Study
- Fitted Kitchen/Dining Room & Utility
- Three Double Bedrooms & Fitted Two Bathrooms
- South Facing Low Maintenance Gardens
- Large Driveway for Three/Four Vehicles
- Double Garage
- Character Features
- Located in the Heart of Hulland Ward - Easy Access to Ashbourne, Belper & Duffield

Nestled in the charming village of Hulland Ward, this delightful double fronted link-detached cottage offers a perfect blend of comfort and convenience. The property boasts two reception rooms, fitted kitchen/dining room, three well-proportioned bedrooms and two modern bathrooms.

The south-facing low maintenance gardens provide a serene outdoor retreat, allowing you to enjoy the sunshine without the burden of extensive upkeep.

The large driveway accommodates three to four vehicles, complemented by a double garage, ensuring ample parking for residents and guests alike.

Situated in the heart of Hulland Ward, this property offers easy access to the nearby towns of Ashbourne and Belper, making it an excellent choice for those who appreciate both rural charm and urban amenities.

The Location

Hulland Ward is a popular village offering amenities including a primary school, pub and beautiful walks in the surrounding open countryside. Easy access to the market town of Ashbourne is available with a selection of cafes, restaurants and shops. The property is also within close proximity of the beautiful Carsington Water and also offers easy access to Derby city centre and major transport links. Ashbourne 5 miles. Belper 7 miles. Wirksworth 7 miles. Derby 11 miles.

Accommodation

Ground Floor

Porch

4'4" x 3'1" (1.33 x 0.96)

With entrance door with inset gothic style window with leaded finish, double glazed window and internal door giving access to hallway.

Hallway

3'1" x 3'1" (0.96 x 0.94)

With staircase leading to first floor.

Lounge

15'8" x 10'7" (4.80 x 3.23)

With fireplace with gas burning stove with raised quarry tiled hearth, solid wood flooring, two character beams to ceiling, internal character leaded window, radiator, two double glazed windows and internal door with chrome handles.



Kitchen/Dining Room

20'4" x 14'9" (6.22 x 4.50)

With one and a half sink unit with chrome mixer tap, a good range fitted base cupboards with drawers, matching solid wood worktops, also the solid wood worktops forming a useful breakfast bar area, built-in wine rack, kickboard lighting, integrated dishwasher, four ring electric hob with extractor hood over, built-in double electric fan assisted oven, built-in combination microwave oven with warming plate drawer underneath, integrated fridge/freezer, porcelain tile flooring, spotlights to ceiling, decorative beams to ceiling, radiator, double glazed door giving access to south facing garden and double glazed window with fitted blind.



Utility

4'11" x 4'2" (1.50 x 1.29)

With plumbing for automatic washing machine, space for tumble dryer, tile flooring, wall mounted Worcester central heating boiler, double glazed obscure window and internal wood door with chrome handles.

Study

9'8" x 9'4" (2.97 x 2.86)

With wood flooring, exposed brick wall, display alcove with stone sills, radiator, decorative beams to ceiling, wooden staircase leading to boarded roof space/occasional bedroom, double glazed window and internal wood door with chrome fittings.



Boarded Roof Space/Occasional Bedroom

9'6" x 9'3" (2.92 x 2.84)

With radiator, two beams to ceiling and two double glazed windows.



Double Bedroom Three

12'5" x 10'2" (3.81 x 3.12)

With two beams to ceiling, radiator, built-in storage cupboard, double glazed window and internal door with chrome fittings.



Shower Room

9'3" x 5'1" (2.82 x 1.55)

With separate shower cubicle with electric shower, fitted wash basin with fitted base cupboard underneath, low level WC, tile flooring, tile splashbacks, large heated chrome towel rail/radiator, wall mounted mirror medicine cabinet, double glazed obscure window and internal wood door with chrome handles.



First Floor Landing

8'3" x 3'0" (2.54 x 0.92)

With beam to ceiling and double glazed window.

Double Bedroom One

16'2" x 11'1" (4.93 x 3.40)

With decorative period style cast iron fireplace, two beams to ceiling, access to roof space, radiator, two double glazed windows and internal wood door with chrome fittings.



Double Bedroom Two

12'2" x 10'1" (3.72 x 3.09)

With built-in cupboard, two beams to ceiling, radiator, access to roof space, two double glazed windows and internal wood door with chrome fittings.

Bathroom

15'7" x 5'4" (4.76 x 1.63)

With bath, fitted wash basin with fitted base cupboard underneath, low level WC, double shower cubicle with shower, tile splashbacks, tile flooring, heated towel rail/radiator, extractor fan, exposed beams, access to roof space, two double glazed windows both having tiled sills and internal wood door with chrome fittings.



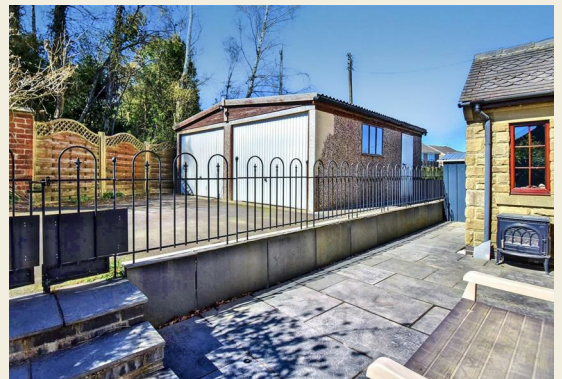
Garden

A low maintenance, south facing, terraced garden offers privacy with attractive raised beds with sleepers and metal garden shed. Outside power, lighting and cold water tap.



Driveway

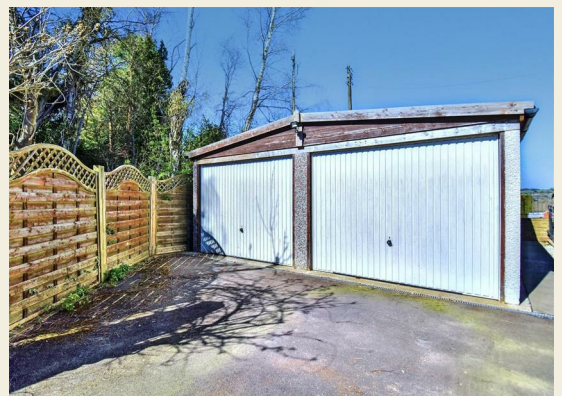
A large driveway provides car standing spaces for three/four cars.



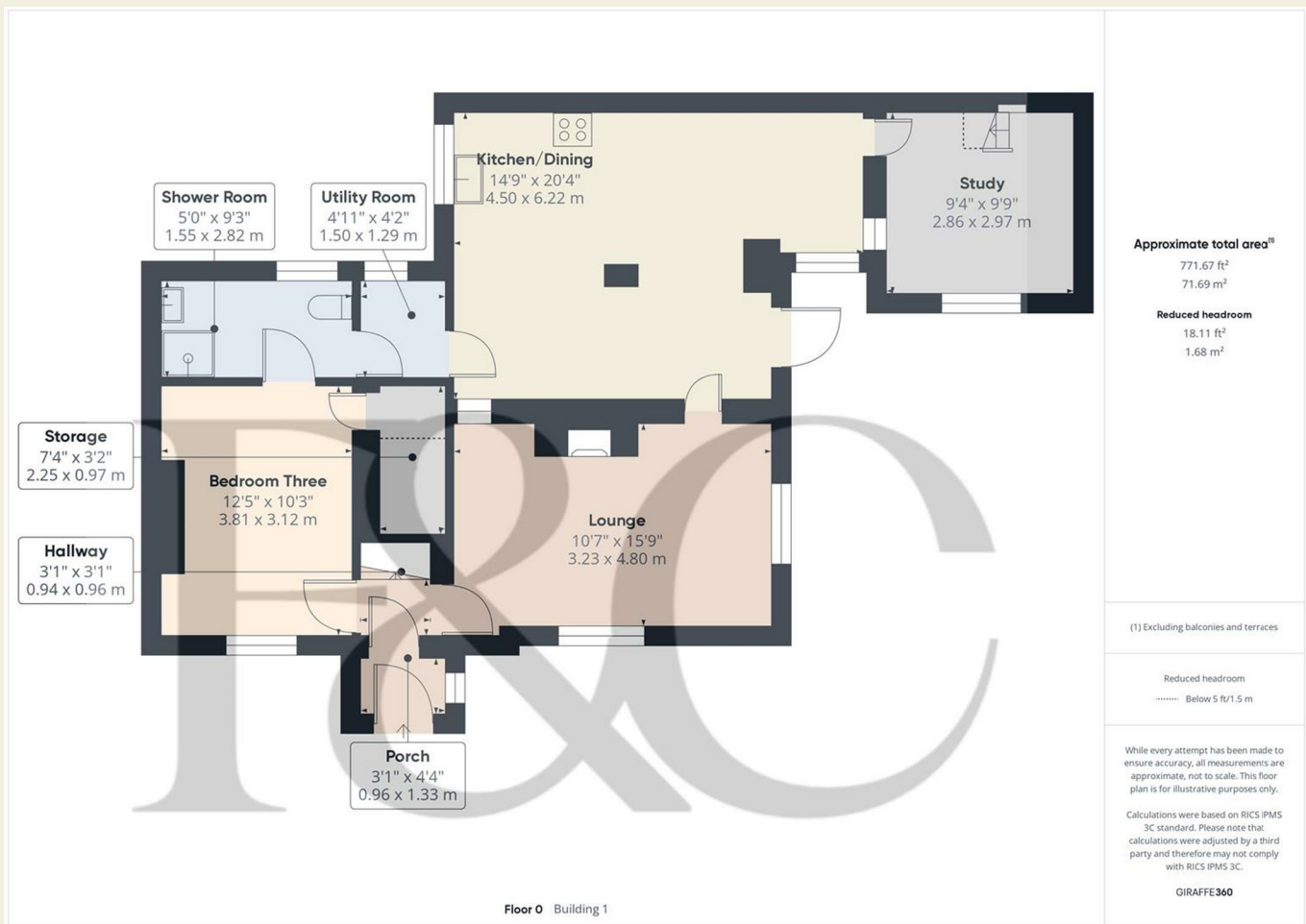
Double Garage

19'5" x 17'6" (5.94 x 5.35)

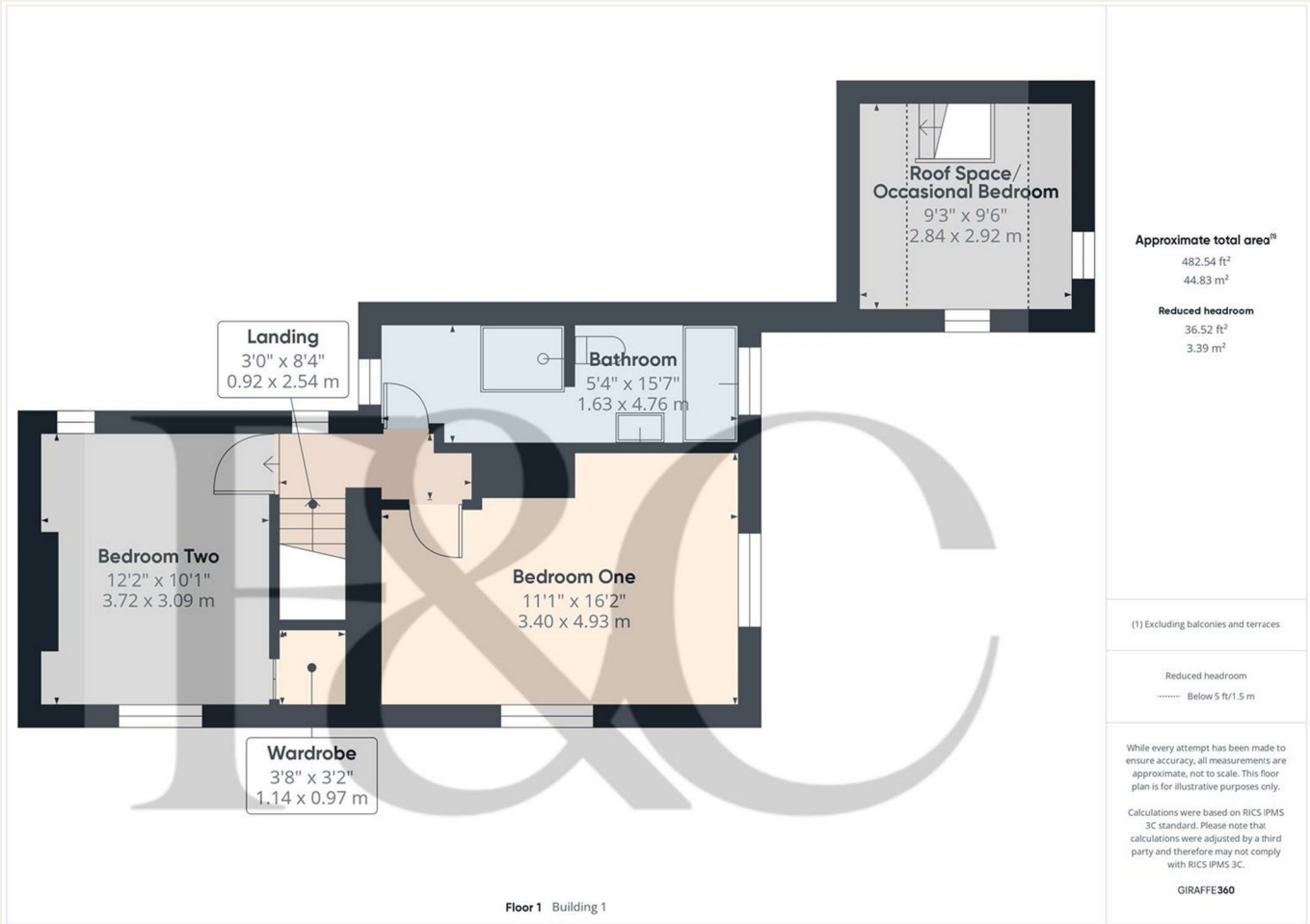
With concrete floor, power, lighting, side personnel door, side window and two up and over doors.



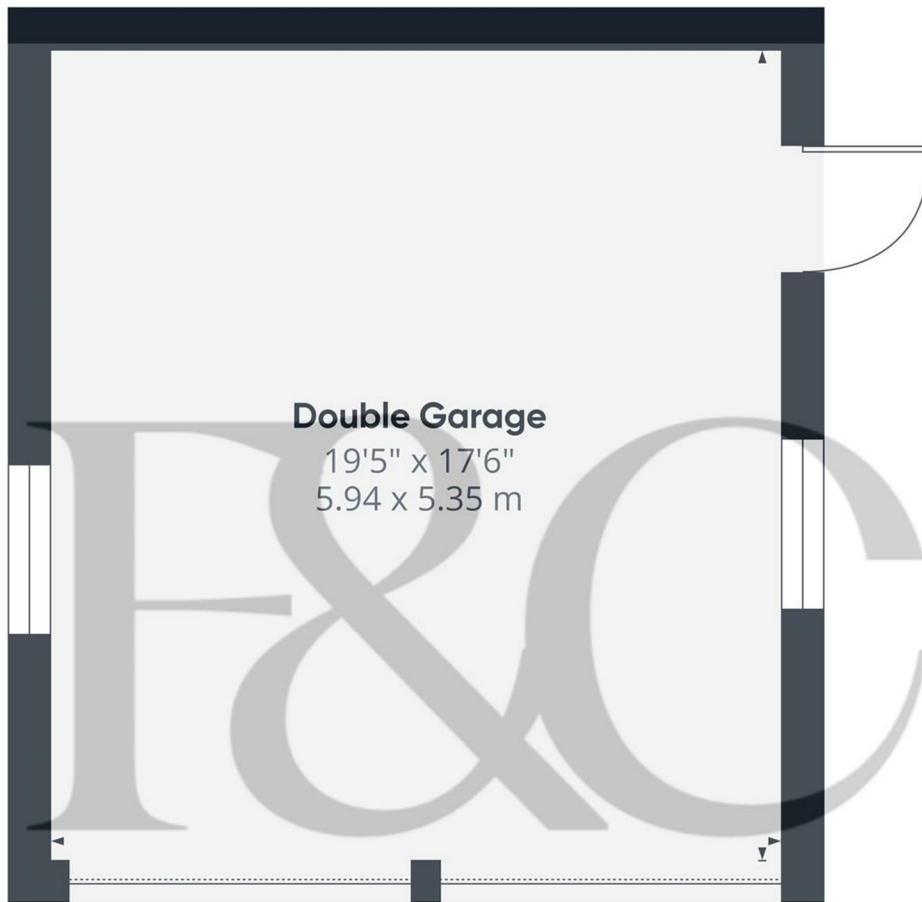
Council Tax Band D



These particulars do not constitute an offer or a contract neither do they form part of an offer or contract. The vendor does not make or give and Messrs. Fletcher & Company nor any person employed has any authority to make or give any representation or warranty, written or oral, in relation to this property. Whilst we endeavour to make our sales details accurate and reliable, if there is any point which is of particular importance to you, please contact the office and we will be pleased to check the information for you, particularly if contemplating travelling some distance to view the property. None of the services or appliances to the property have been tested and any prospective purchasers should satisfy themselves as to their adequacy prior to committing themselves to purchase.



These particulars do not constitute an offer or a contract neither do they form part of an offer or contract. The vendor does not make or give and Messrs. Fletcher & Company nor any person employed has any authority to make or give any representation or warranty, written or oral, in relation to this property. Whilst we endeavour to make our sales details accurate and reliable, if there is any point which is of particular importance to you, please contact the office and we will be pleased to check the information for you, particularly if contemplating travelling some distance to view the property. None of the services or appliances to the property have been tested and any prospective purchasers should satisfy themselves as to their adequacy prior to committing themselves to purchase.



Double Garage

19'5" x 17'6"
5.94 x 5.35 m

Approximate total area⁽¹⁾

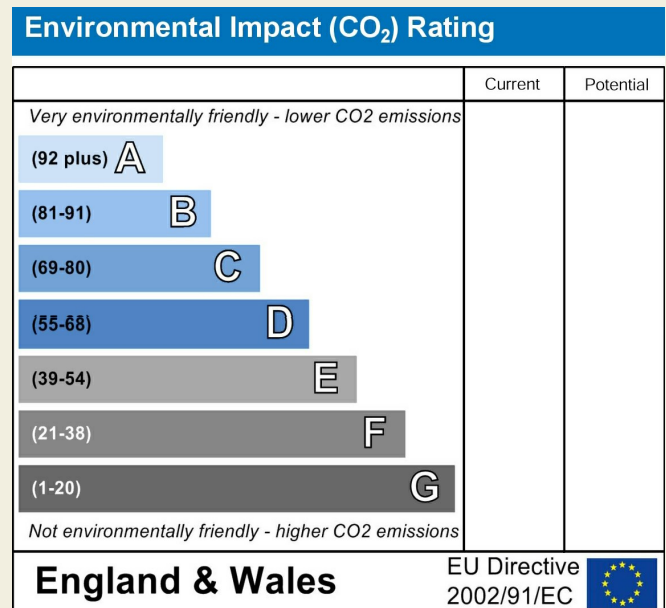
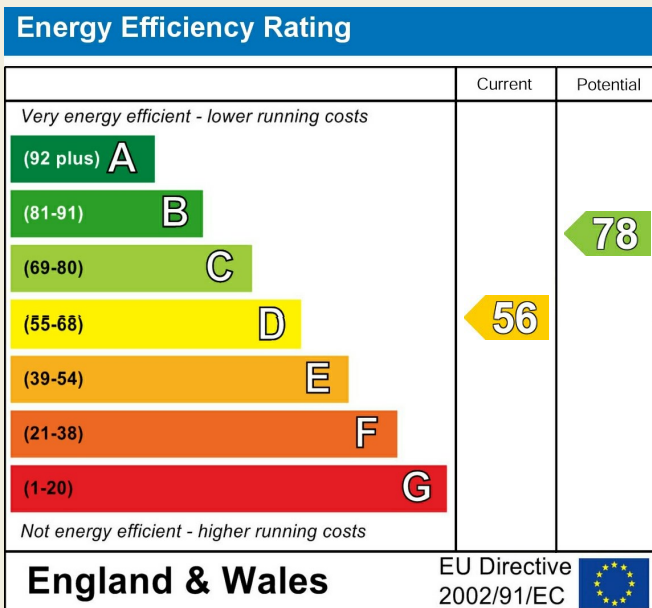
341.43 ft²
31.72 m²

(1) Excluding balconies and terraces

While every attempt has been made to ensure accuracy, all measurements are approximate, not to scale. This floor plan is for illustrative purposes only.

Calculations were based on RICS IPMS 3C standard. Please note that calculations were adjusted by a third party and therefore may not comply with RICS IPMS 3C.

GIRAFFE360



These particulars do not constitute an offer or a contract neither do they form part of an offer or contract. The vendor does not make or give and Messrs. Fletcher & Company nor any person employed has any authority to make or give any representation or warranty, written or oral, in relation to this property. Whilst we endeavour to make our sales details accurate and reliable, if there is any point which is of particular importance to you, please contact the office and we will be pleased to check the information for you, particularly if contemplating travelling some distance to view the property. None of the services or appliances to the property have been tested and any prospective purchasers should satisfy themselves as to their adequacy prior to committing themselves to purchase.