



2 Bed House - Detached

The Stables Chesterfield
Road
Beeley
Matlock
DE4 2ND

£1,595 Per Calendar Month

Fletcher
& Company

The Stables Chesterfield Road Matlock DE4 2NQ



- Pets Considered • Available Fully, Part or Unfurnished • Hot Tub Available • Off Road Parking For Several Vehicles • Large Storage Area • Picturesque Location • Rural Location - Peak District • Available Immediately • Close To Good Road Networks • Superb Place To Relax And Unwind

A stunning two bedroom detached cottage with a stunning garden and far reaching views of the countryside.

Located in the picturesque Derbyshire Dales, which is conveniently near to the towns of Matlock and Bakewell. Nestled in the heart of the Peak District National Park, Beeley is renowned for its stunning natural beauty and charming, quintessentially English atmosphere. The village features traditional stone-built cottages, a historic church, and a welcoming community. Visitors are drawn to Beeley for its scenic walking trails, including the nearby Chatsworth Park, home to the magnificent Chatsworth House, one of England's most famous stately homes. With its rural tranquillity and proximity to outdoor adventures.

The property briefly consists of:

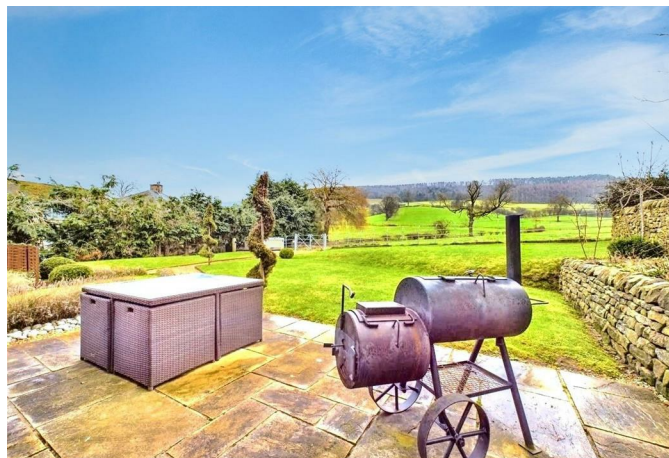
Utility room leading to;

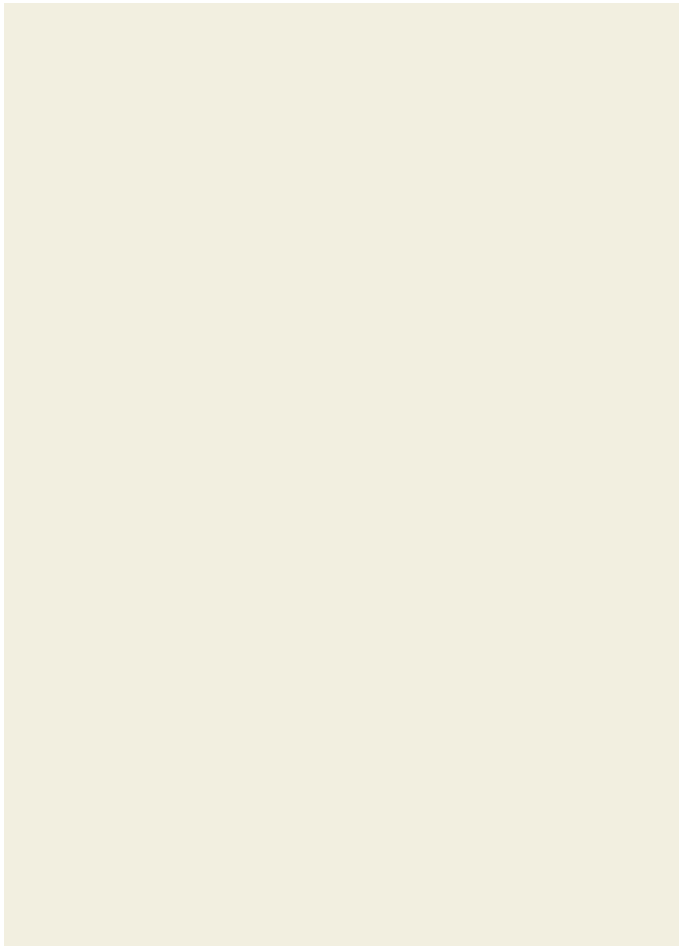
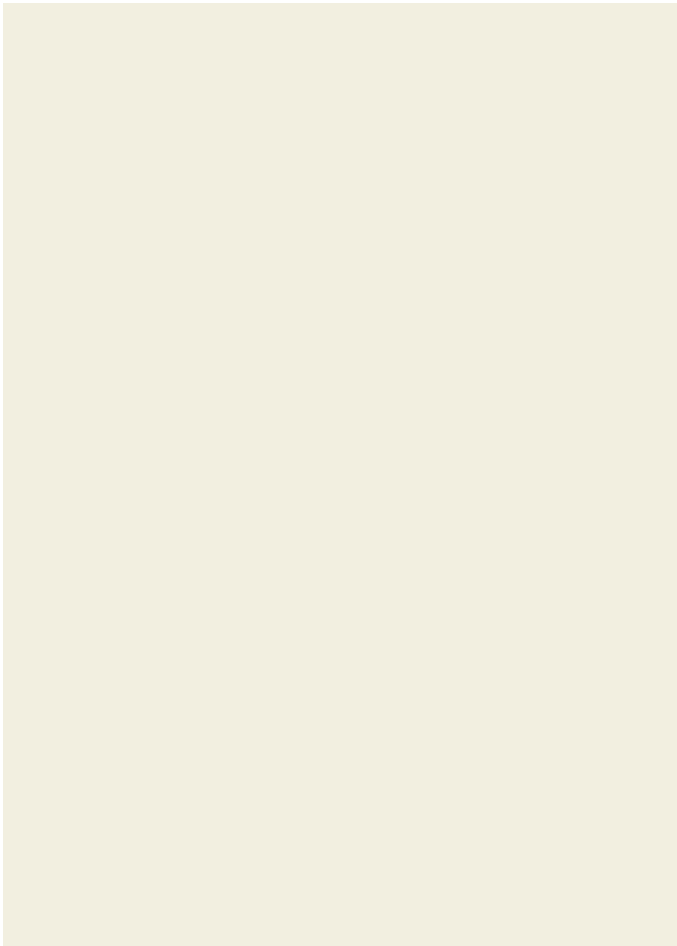
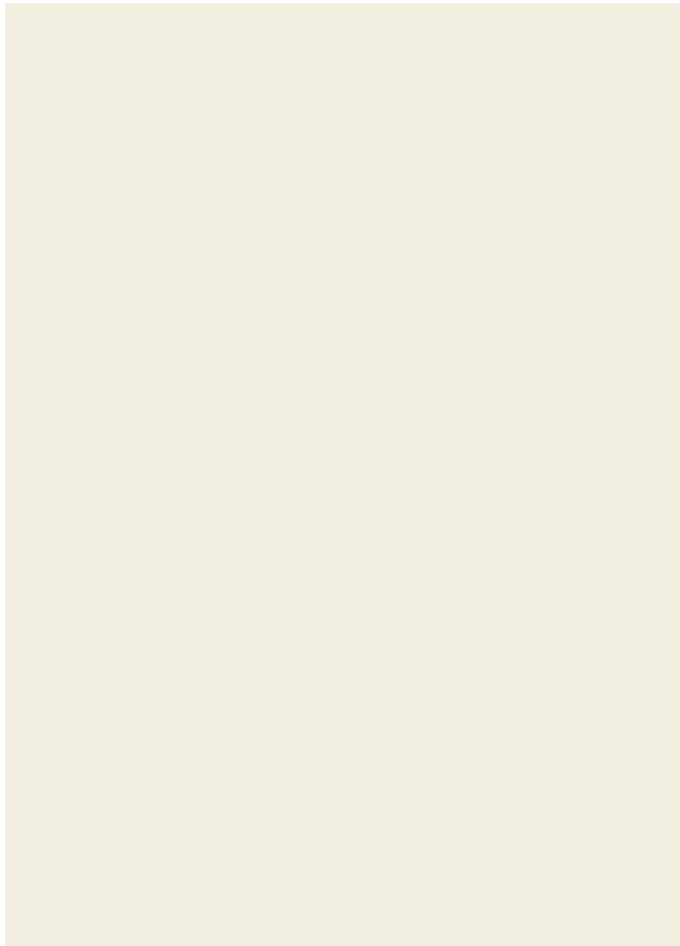
An extremely well fitted downstairs shower room with shower, WC, basin and heated towel rail.

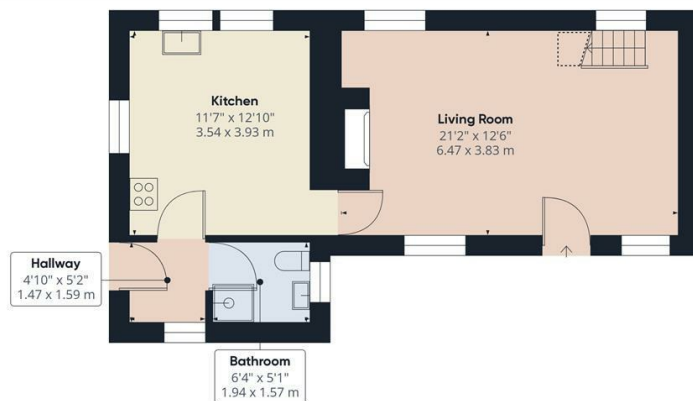
Kitchen diner with stunning views over the garden. The kitchen comes with an electric Everhot Range, dishwasher, washing machine and fridge freezer.

Stunning living room with wooden beams, open stairway and views over the countryside. The living room benefits from wood burning fireplace and is extremely spacious and further benefits from world class views to the rear

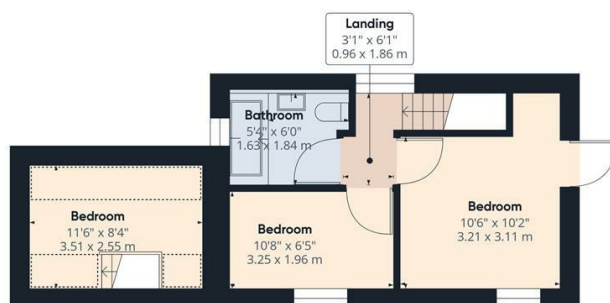
In addition the kitchen has a loft hatch to a converted space with velux window which would make an ideal storage space.







Floor 0



Floor 1

Approximate total area⁸
825.84 ft²
76.72 m²

Reduced headroom
60.02 ft²
5.58 m²

Excluding balconies and terraces

Reduced headroom
(below 1.5m/4.92ft)

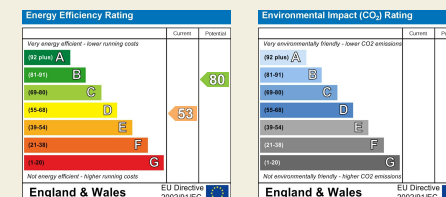
While every attempt has been made to ensure accuracy, all measurements are approximate, not to scale. This floor plan is for illustrative purposes only.

GIRAFFE360

Duffield House
Town Street
Duffield
Derbyshire
DE56 4GD

T: 01332 843390

E: duffield@fletcherandcompany.co.uk
www.fletcherandcompany.co.uk



These particulars do not constitute an offer or a contract neither do they form part of an offer or contract. The vendor does not make or give and Messrs. Fletcher & Company nor any person employed has any authority to make or give any representation or warranty, written or oral, in relation to this property. Whilst we endeavour to make our sales details accurate and reliable, if there is any point which is of particular importance to you, please contact the office and we will be pleased to check the information for you, particularly if contemplating travelling some distance to view the property. None of the services or appliances to the property have been tested and any prospective purchasers should satisfy themselves as to their adequacy prior to committing themselves to purchase.

Fletcher
& Company