



4 Bed House - Detached

Flamstead House, 36 Flamstead Lane, Denby Village, DE5 8PE
Offers Around £595,000 Freehold



4



3



2



E

**Fletcher
& Company**

www.fletcherandcompany.co.uk

- Three Storey Former Farmhouse Detached Residence
- Delightful Semi-Rural Location – Countryside Views to Both Front & Rear
- Set Well Back – Attractive Quiet Country Lane
- Lounge & Snug
- Large Conservatory
- Kitchen & Utility Room/Cloakroom
- Four Bedrooms & Two Bathrooms
- Private Secluded South Facing Garden
- Driveway & Integral Garage
- Extensive Attic Rooms – Ideal Loft Conversion – (subject to planning permission)

CHARMING AND COUNTRY – Detached, three storey, former farmhouse residence occupying very pleasant, semi-rural location within the heart of Denby village. The property offers a wealth of style and character and enjoys open aspects to both front and rear of the property.

The property benefits from a included, south facing rear garden. Timber shed. Greenhouse. Workshop.

The property is believed to date from the late 18th century and was formerly part of the Drury-Lowe estate. It is of impressive, three storey appearance, constructed of brick having a white painted finish beneath a roof of Staffordshire blue tiles with a front elevation revealed by a half timber effect gable. It is set well back from the village lane behind a double width driveway providing access to an integral garage.

Special note – extensive attic rooms ideal for loft conversion (subject to planning permission)

The Location

Denby village is pleasantly situated and surrounded by open countryside, being highly convenient for local centres including Derby, some eight miles to the south. Other principle centres include Nottingham, approximately twelve miles to the east and junction twenty-six of the motorway is approximately ten miles to the east. In addition the famous market town of Ashbourne, known as the gateway to Dovedale and the Peak District National Park, is situated approximately twelve miles to the west. Local amenities include charming village church and noted public house/restaurant known as Denby Lodge.

Accommodation

Ground Floor

Entrance Hall

6'0" x 5'1" (1.85 x 1.55)

With entrance door with two inset gothic style windows with leaded finish, tile flooring, radiator, door with access to garage and wall lights.

Cloakroom

8'7" x 6'10" (2.64 x 2.09)

With low level WC, wash basin with fitted base cupboard underneath, decorative beams to ceiling, tile flooring, radiator, double glazed leaded window, internal latched door and two built-in large laundry cupboards providing space for tumble dryer, plumbing for automatic washing machine, shelving and central heating boiler.

Lounge

15'8" x 14'11" (4.78 x 4.57)

With featured chimney breast incorporating stone lintel and log burning stove with a stone hearth, wood flooring, principle beam to ceiling, spotlights to ceiling, two radiators, two double glazed windows both having leaded finish, internal double glazed French doors with leaded finish opening into large conservatory and internal latched door.



Snug

13'8" x 11'1" (4.19 x 3.39)

With brick fireplace incorporating gas flame fire and raised tile hearth, character beams to ceiling, radiator, wall lights, two display alcoves either side of chimney breast, internal French glazed doors opening into conservatory and internal latched door.



Large Conservatory

21'4" x 11'10" (6.52 x 3.63)

With tile flooring, power, lighting, ceiling fan, radiator, double glazed windows and double glazed doors opening onto private rear garden.



Kitchen

13'8" x 9'8" (4.18 x 2.95)

With one and a half sink unit with chrome mixer tap, wall and base fitted units with matching worktops, built-in Stoves five ring gas hob with concealed extractor hood, built-in Bosch double electric fan assisted oven, vinyl tiled effect flooring, concealed worktop lights, wall mounted plate rack, double glazed window and open archway leading into utility room.



Utility

10'4" x 5'8" (3.17 x 1.73)

With single sink unit with mixer tap, wall and base fitted units with matching worktops, plumbing for dishwasher or washing machine, wine rack, breakfast bar area, matching vinyl tiled effect flooring, double glazed window to front, coat hangers and front and back access doors.

Inner Hall

16'0" x 3'11" (4.88 x 1.21)

With tile flooring, decorative beams to ceiling, radiator, split-level staircase leading to first floor and internal latched door.

First Floor Landing

14'6" x 3'2" (4.44 x 0.98)

With decorative beams to ceiling, double glazed window to front with leaded finish, double glazed window to side with leaded finish, latched door giving access to second floor and loft room.

Bedroom One

13'5" x 9'4" (4.09 x 2.85)

With a good range of fitted wardrobes providing good storage including wardrobes, bedside cabinets and corner display shelving, radiator, open archway leading to dressing room, double glazed window with leaded finish and internal panelled door.



Dressing Room

10'0" x 9'3" (3.07 x 2.83)

With a continuation of fitted wardrobes including wardrobes providing good storage, matching dressing table with base cupboards underneath, additional shelving, radiator, double glazed window with leaded finish and panelled door giving access to en-suite bathroom.



En-Suite Bathroom

10'1" x 5'8" (3.09 x 1.74)

With roll edge top with claw feet, fitted wash basin with fitted base cupboard underneath, low level WC, double corner shower cubicle with electric shower, tile splashbacks with matching tile flooring, heated chrome towel rail/radiator, spotlights to ceiling, double glazed leaded window and internal panelled door.



Bedroom Two

15'9" x 13'0" (4.82 x 3.97)

Please note this bedroom could be split into two bedrooms if desired.

With two radiators, principle beam to ceiling, double glazed window with leaded finish to side, double glazed window with leaded finish to rear and internal panelled door.

Bedroom Three

11'3" x 6'0" (3.43 x 1.84)

With radiator, double glazed window with leaded finish and internal panelled door.

Family Bathroom

8'9" x 6'2" (2.69 x 1.88)

With roll top slipper bath with chrome mixer tap/hand shower attachment and claw feet, pedestal wash handbasin, low level WC, separate corner shower cubicle with chrome fittings including shower, tile splashbacks, matching tile flooring, radiator, spotlights to ceiling, double glazed obscure window with leaded finish and internal panelled door.



Second Floor

Landing/Bedroom Four

14'11" x 9'10" (4.55 x 3.01)

With two beams to ceiling, sealed unit double glazed leaded window and latched door giving access to roof space.

Roof Space

32'6" x 16'5" x 16'0" x 10'5" (9.93 x 5.01 x 4.90 x 3.19)

Offers excellent potential for a loft conversion (subject to planning permission)

Private Garden

Being of major asset in sale to this particular property is it's generous sized, private, enclosed, south facing rear garden (backing directly onto open fields and countryside) The garden enjoys shaped lawns, large patio area providing a pleasant sitting out entertaining space, a covered arbour sitting area and enclosed by fencing. Garden outbuildings include timber shed, greenhouse and timber workshop.



Timber Shed

6'7" x 5'7" (2.01 x 1.72)

Greenhouse

7'11" x 5'9" (2.42 x 1.76)

Timber Workshop

13'7" x 7'6" (4.15 x 2.31)

Driveway

A double width driveway provides car standing spaces for three vehicles and leads to an integral garage with power and lighting.

Garage

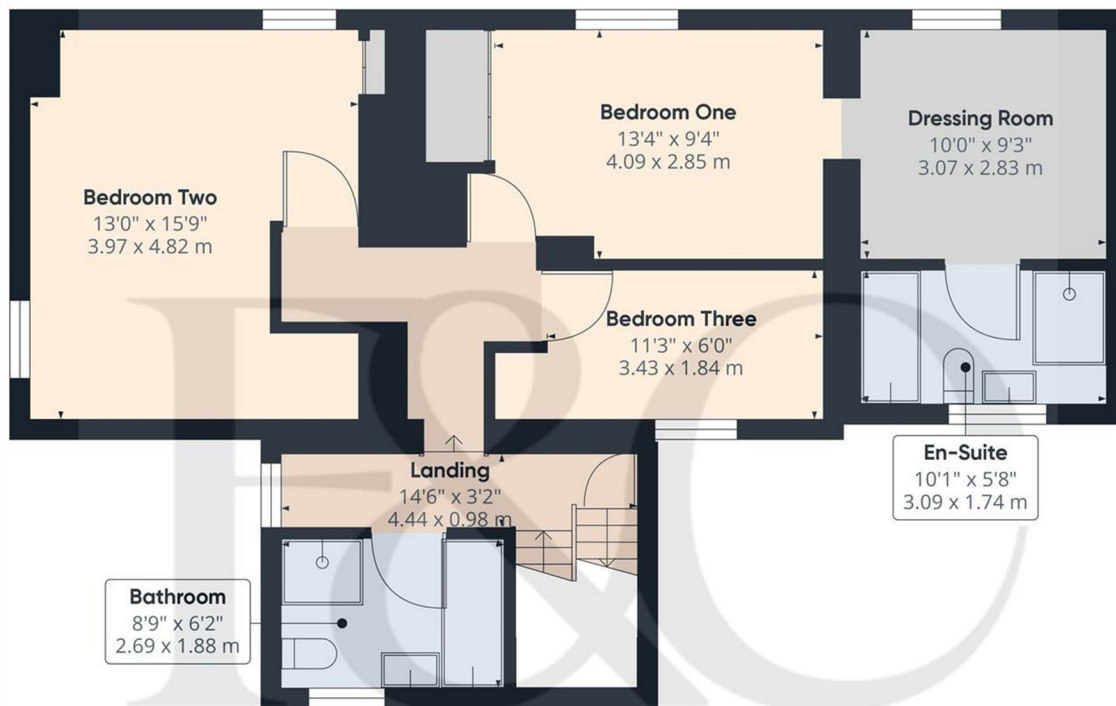
15'7" x 10'7" (4.77 x 3.23)

With concrete floor, power, lighting, double glazed window to rear, rear personnel door, integral door giving access to property and electric up and over front door.

Council Tax - F



These particulars do not constitute an offer or a contract neither do they form part of an offer or contract. The vendor does not make or give and Messrs. Fletcher & Company nor any person employed has any authority to make or give any representation or warranty, written or oral, in relation to this property. Whilst we endeavour to make our sales details accurate and reliable, if there is any point which is of particular importance to you, please contact the office and we will be pleased to check the information for you, particularly if contemplating travelling some distance to view the property. None of the services or appliances to the property have been tested and any prospective purchasers should satisfy themselves as to their adequacy prior to committing themselves to purchase.



Floor 1

Approximate total area⁽¹⁾
703.54 ft²
65.36 m²

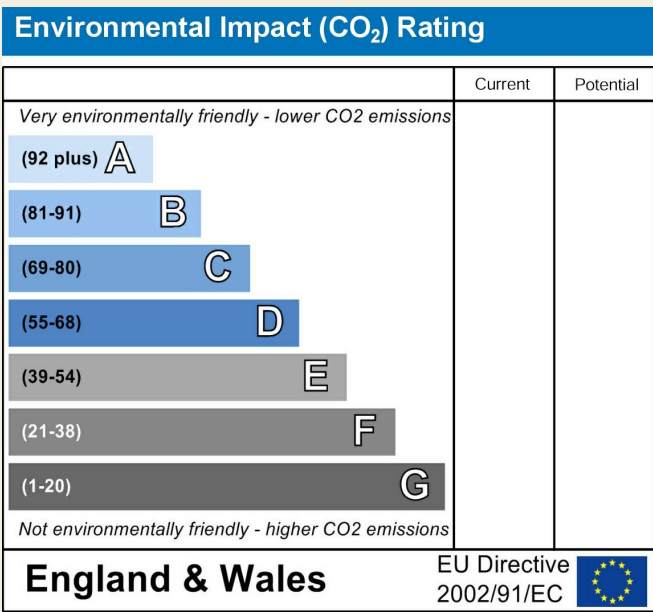
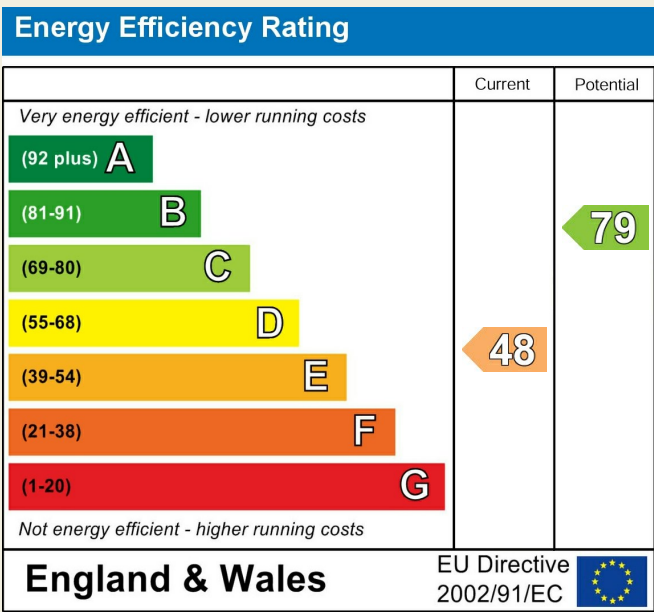
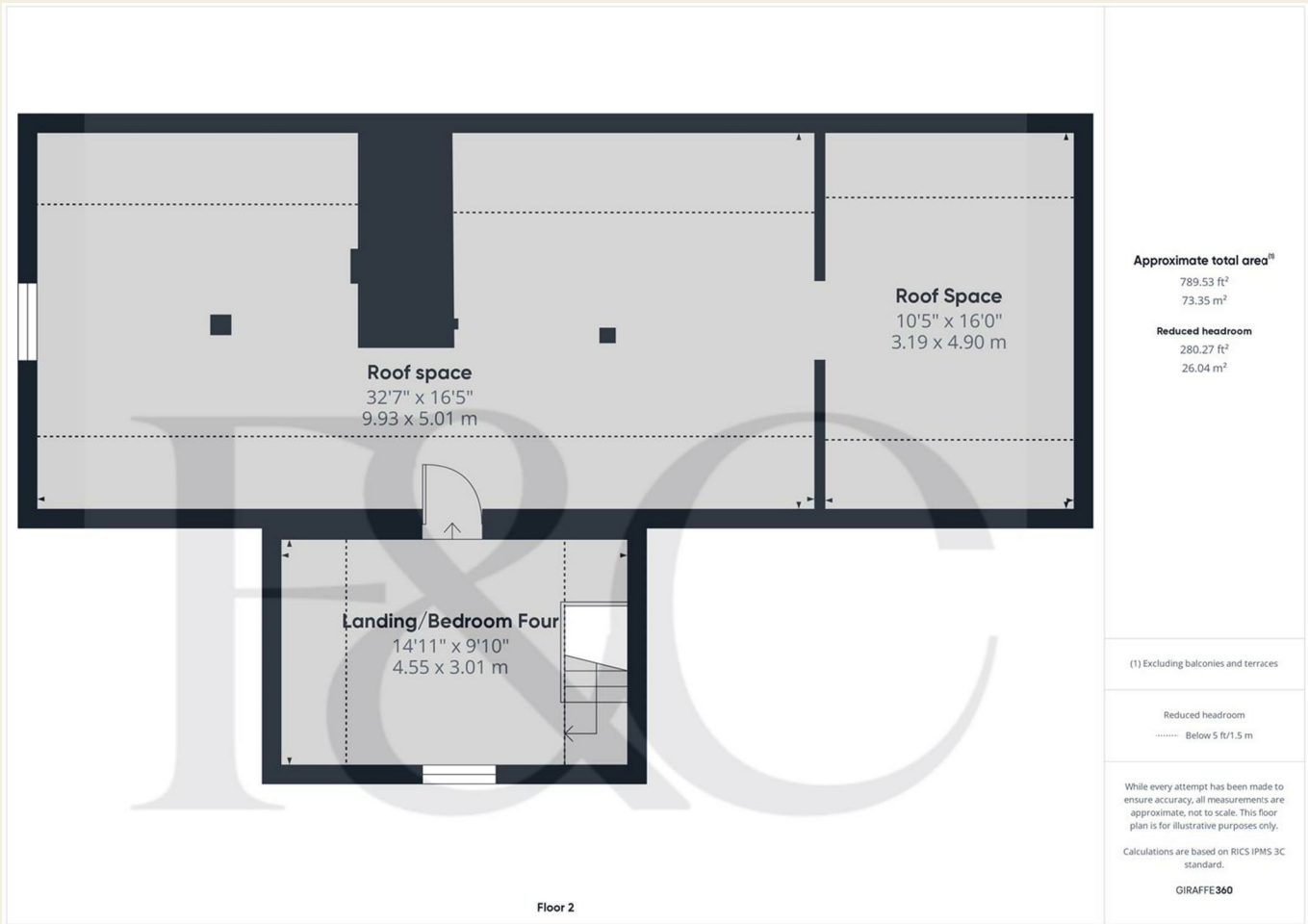
(1) Excluding balconies and terraces

While every attempt has been made to ensure accuracy, all measurements are approximate, not to scale. This floor plan is for illustrative purposes only.

Calculations are based on RICS IPMS 3C standard.

GIRAFFE360

These particulars do not constitute an offer or a contract neither do they form part of an offer or contract. The vendor does not make or give and Messrs. Fletcher & Company nor any person employed has any authority to make or give any representation or warranty, written or oral, in relation to this property. Whilst we endeavour to make our sales details accurate and reliable, if there is any point which is of particular importance to you, please contact the office and we will be pleased to check the information for you, particularly if contemplating travelling some distance to view the property. None of the services or appliances to the property have been tested and any prospective purchasers should satisfy themselves as to their adequacy prior to committing themselves to purchase.



These particulars do not constitute an offer or a contract neither do they form part of an offer or contract. The vendor does not make or give and Messrs. Fletcher & Company nor any person employed has any authority to make or give any representation or warranty, written or oral, in relation to this property. Whilst we endeavour to make our sales details accurate and reliable, if there is any point which is of particular importance to you, please contact the office and we will be pleased to check the information for you, particularly if contemplating travelling some distance to view the property. None of the services or appliances to the property have been tested and any prospective purchasers should satisfy themselves as to their adequacy prior to committing themselves to purchase.