



---

3 Bed House

70 The Common  
Quarndon  
Derby  
DE22 5JY

£1,850 Per Calendar Month

---

Fletcher  
& Company

70 The Common  
Derby  
DE22 5JY



- AVAILABLE IMMEDIATELY • REDECORATED THROUGHOUT • NEW KITCHEN & BATHROOM • TWO DOUBLE BEDROOMS WITH BUILT IN STORAGE • STUNNING VIEWS IN A QUIET LOCATION • BEAUTIFULLY LANDSCAPED REAR, SIDE AND FRONT GARDENS • OFF ROAD PARKING • TRANQUIL SETTING • LONG TERM LET AVAILABLE • HIGH SPECIFICATION FINISH THROUGHOUT

Nestled in the charming village of Quarndon, Derby, this exquisite house on The Common is a true gem waiting to be discovered.

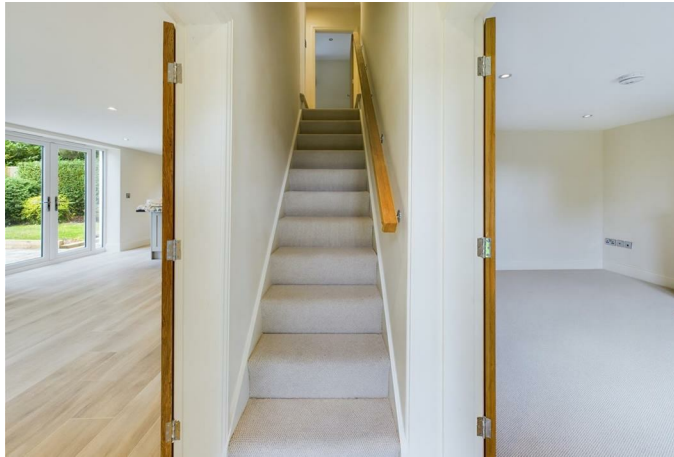
Step inside to find a brand new kitchen, bathroom, and flooring that exude modern elegance and style. The attention to detail is evident in every corner of this home, making it a perfect blend of luxury and comfort.

As you make your way outside, you'll be greeted by the beauty of the stunning private gardens, offering a peaceful retreat where you can relax and unwind in the midst of nature. There is secure, off-road parking available for two vehicles. Additional parking is available.

Don't miss the opportunity to make this house your home and experience the best of village living with all the modern conveniences you could wish for.

The property is available immediately, benefits from underfloor heating throughout, has been redecorated and boasts a new kitchen and bathroom, with high-end finishing's that perfectly compliment each room.





## Ground Floor

### Lounge

A charming room with a feature fireplace incorporating a cast-iron stove with exposed brick surround. Under stairs storage cupboard, recessed ceiling spotlights and a double glazed window to the front aspect.

### Kitchen/Diner

A superbly appointed kitchen/diner that has been fitted to the highest standard with no expense spared throughout. This spacious area has an abundance of light naturally flowing through owing to the stylishly placed windows and doors. This area affords space and is the perfect place to prepare, cook and eat meals whilst enjoying the views of the garden and privacy.

### First Floor

### Landing

## Master Bedroom

A superb size offering in-built storage and views over the surrounding fields to the front of this charming property.

## Bedroom Two

Another great sized bedroom that offers significant storage and views across the open fields in-front of this stunning property

## Bedroom Three

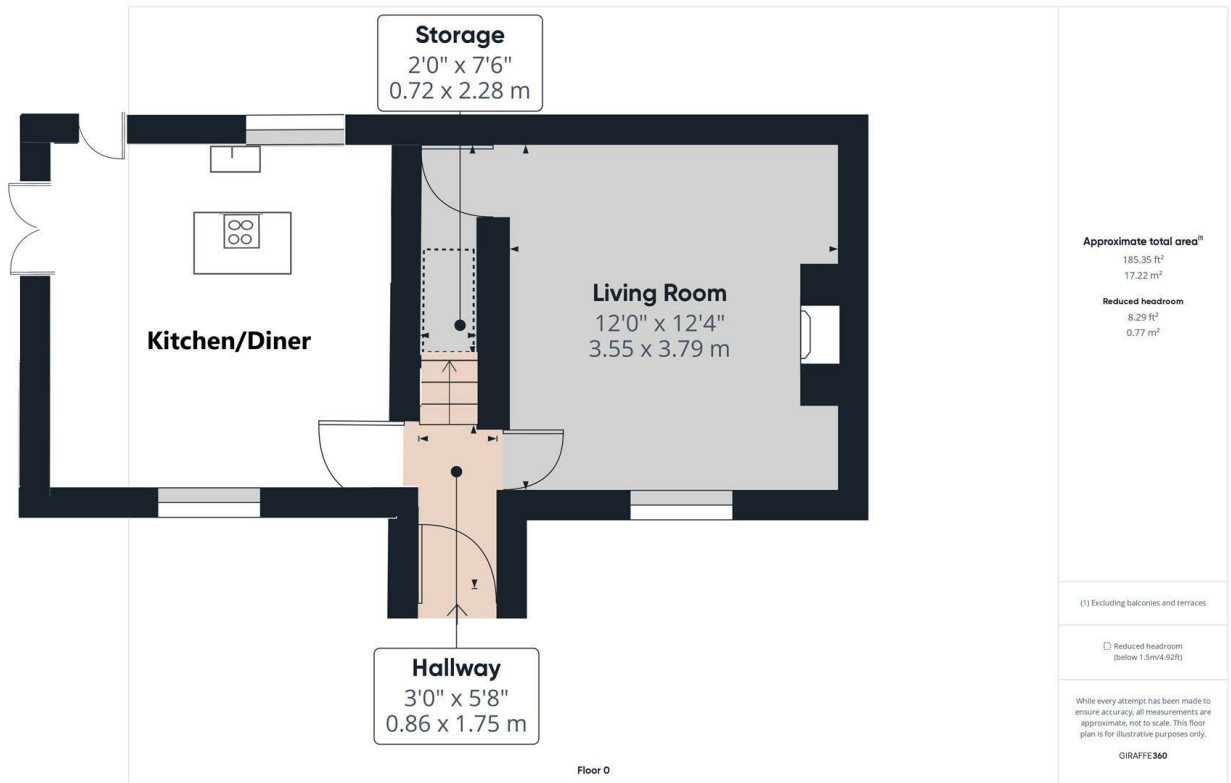
A single bedroom that can easily double up as a storage, dresser/ work area if required.

## Family Bathroom

A superbly appointed room that is finished to the highest standard. This room has substantial floorspace and has been fitted with a stylish four piece Burlington bathroom/shower set.

## Outside

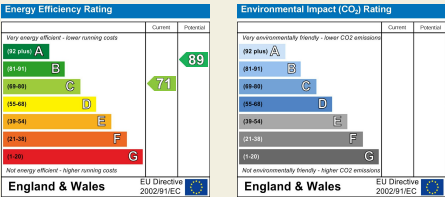
Stunning, very private garden with access to two off-road parking spaces and space for visitor parking also. Beyond the open countryside.



Duffield House  
Town Street  
Duffield  
Derbyshire  
DE56 4GD

T: 01332 843390

E: duffield@fletcherandcompany.co.uk  
www.fletcherandcompany.co.uk



These particulars do not constitute an offer or a contract neither do they form part of an offer or contract. The vendor does not make or give and Messrs. Fletcher & Company nor any person employed has any authority to make or give any representation or warranty, written or oral, in relation to this property. Whilst we endeavour to make our sales details accurate and reliable, if there is any point which is of particular importance to you, please contact the office and we will be pleased to check the information for you, particularly if contemplating travelling some distance to view the property. None of the services or appliances to the property have been tested and any prospective purchasers should satisfy themselves as to their adequacy prior to committing themselves to purchase.

Fletcher  
& Company