



2 Bed Apartment

Dartmouth Court Bowes
Road
Boulton Moor
Derby
DE24 5BZ

£895 Per Calendar Month

Fletcher
& Company

Dartmouth Court Bowes Road
Derby
DE24 5BZ



- AVAILABLE LATE AUGUST 2024
- IMMACULATE TWO BEDROOM TWO BATH APARTMENT
- FIRST FLOOR CORNER APARTMENT
- TWO ALLOCATED CAR PARKING SPACES
- NEWLY BUILT
- INTEGRATED FRIDGE/FREEZER
- NEUTRALLY DECORATED THROUGHOUT
- AMAZING LOCATION NEAR A50 AND OTHER MAJOR ROAD NETWORKS
- IDEAL FOR WORKING PROFESSIONALS
- SORRY NO PETS

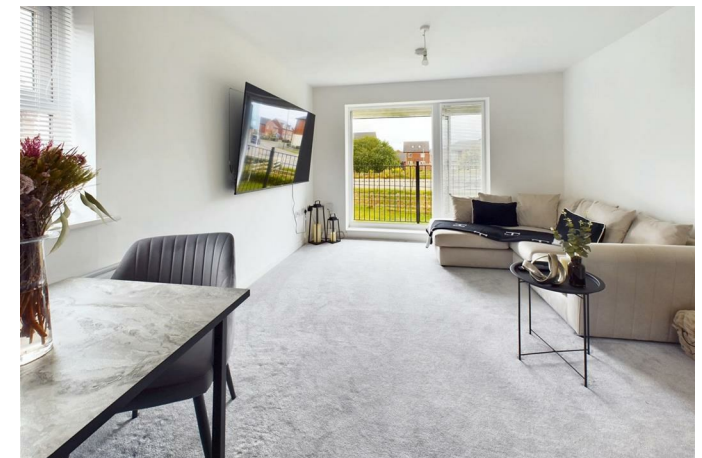
Welcome to this stunning apartment located on Bowes Road in the charming area of Boulton Moor, Derby. This property is like new, boasting a fresh and modern feel throughout.

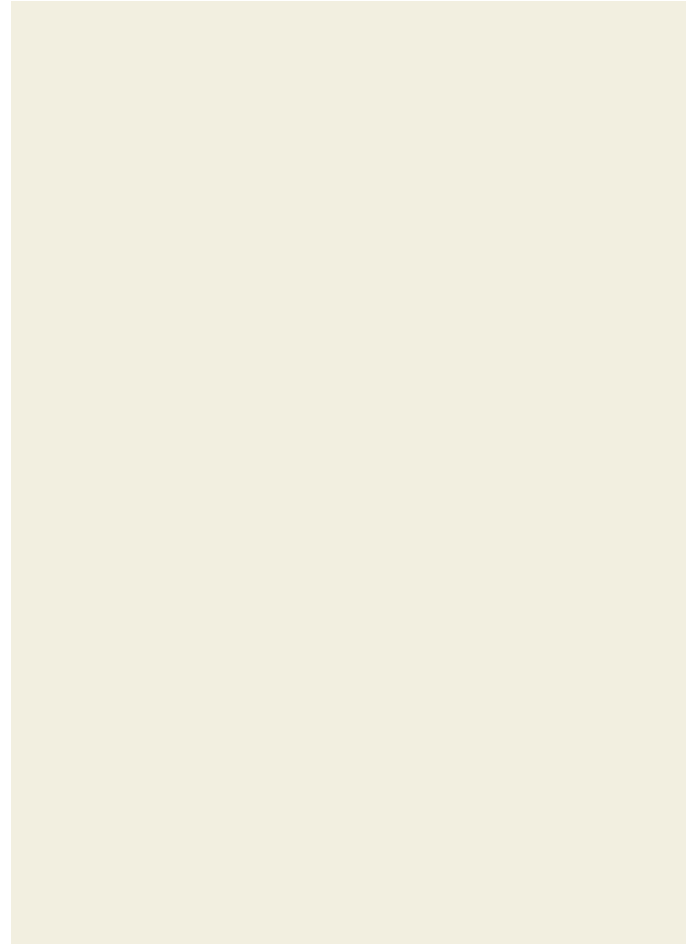
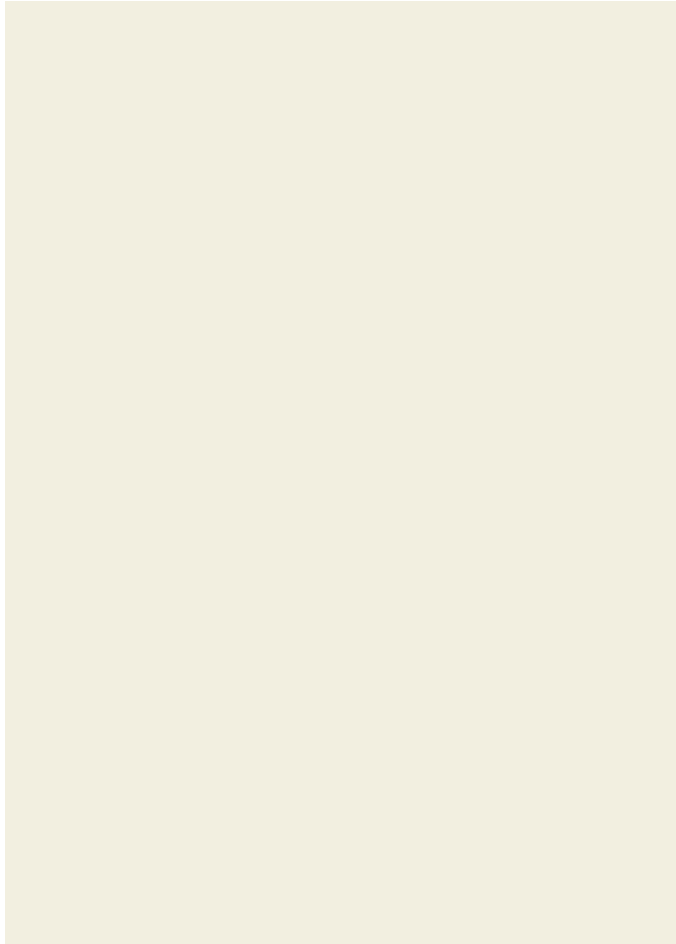
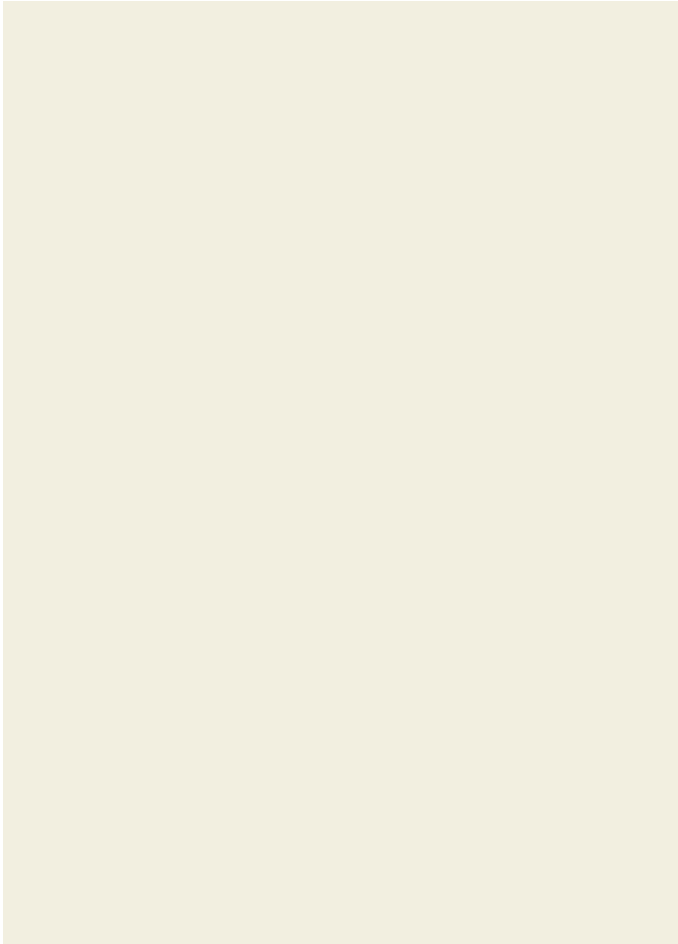
As you step inside, you'll be greeted by a beautifully decorated interior that exudes warmth and style. The first floor location offers convenience and a sense of privacy, creating a peaceful retreat to call home.

This apartment features two bedrooms and two bathrooms, providing ample space for comfortable living. Additionally, the property comes with two allocated car parking spaces that are conveniently placed near to the entry/exit door.

Whether you're looking for a cozy space to unwind after a long day or a place to entertain friends and family, this apartment offers the perfect setting for both. Don't miss out on the opportunity to make this lovely property your own. Contact us today to arrange a viewing and experience the charm of this delightful apartment on Bowes Road.

Available late August. Council Tax Band C. EPC B. Available on a long term let. Sorry, no pets.

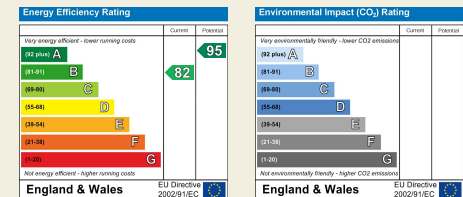
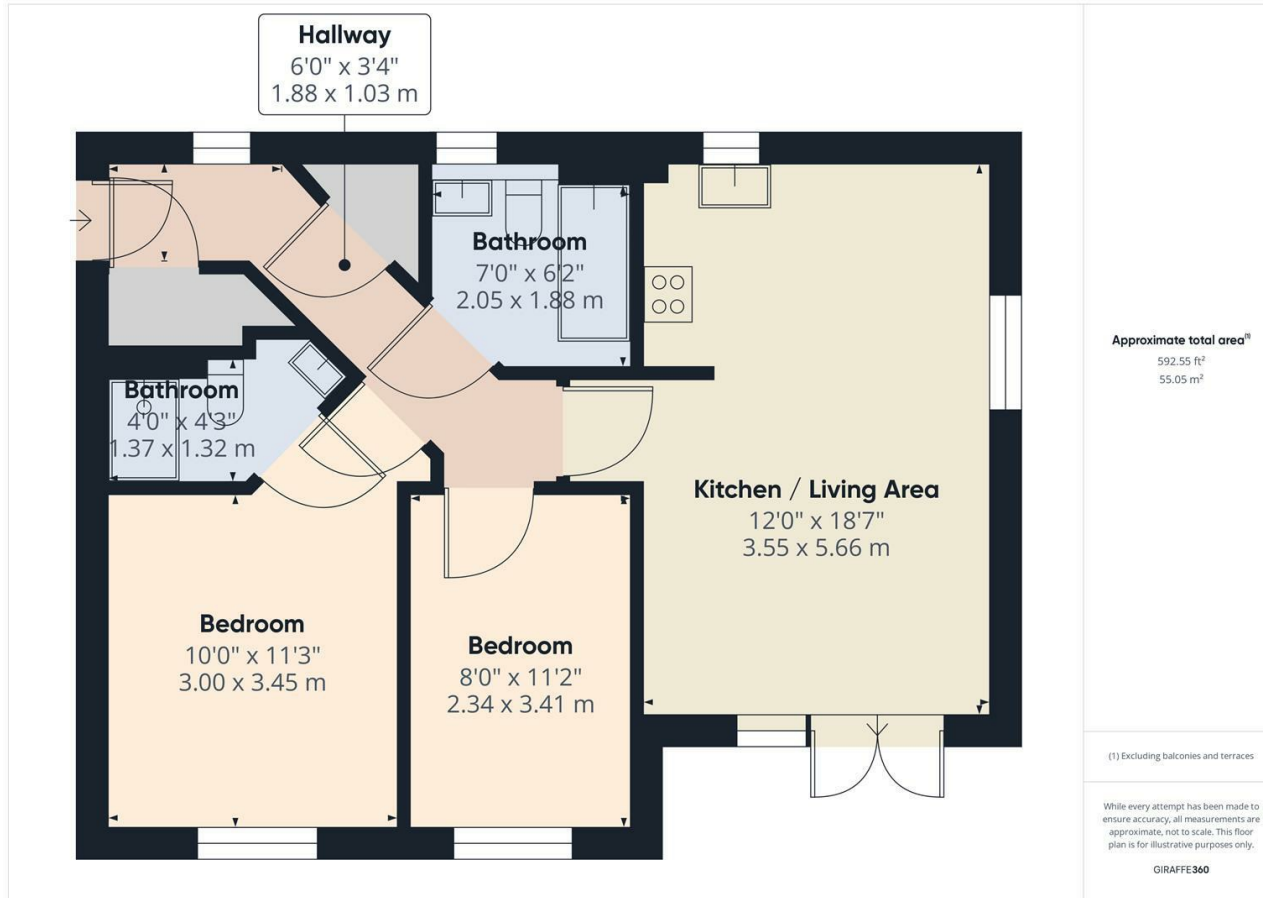




Duffield House
 Town Street
 Duffield
 Derbyshire
 DE56 4GD

T: 01332 843390

E: duffield@fletcherandcompany.co.uk
 www.fletcherandcompany.co.uk



These particulars do not constitute an offer or a contract neither do they form part of an offer or contract. The vendor does not make or give and Messrs. Fletcher & Company nor any person employed has any authority to make or give any representation or warranty, written or oral, in relation to this property. Whilst we endeavour to make our sales details accurate and reliable, if there is any point which is of particular importance to you, please contact the office and we will be pleased to check the information for you, particularly if contemplating travelling some distance to view the property. None of the services or appliances to the property have been tested and any prospective purchasers should satisfy themselves as to their adequacy prior to committing themselves to purchase.

Fletcher
 & Company