



4 Bed House - Detached

38 New Zealand Lane
Duffield
Belper
DE56 4BZ

£1,950 Per Calendar Month

**Fletcher
& Company**

38 New Zealand Lane
Belper
DE56 4BZ



- AVAILABLE LATE AUGUST 2024 • SUPREMELY EXTENDED 4 BEDROOM DETACHED PROPERTY • LARGE EN-SUITE TO MASTER BEDROOM • LARGE UTILITY ROOM WITH OFFICE SPACE • LARGE OPEN PLAN KITCHEN/DINING ROOM WITH SITTING ROOM • ECCLESBOURNE CATCHMENT AREA • BEAUTIFUL LARGE AND PRIVATE REAR GARDEN • LONG TERM LET AVAILABLE • A LARGE AND SPACIOUS FAMILY PROPERTY

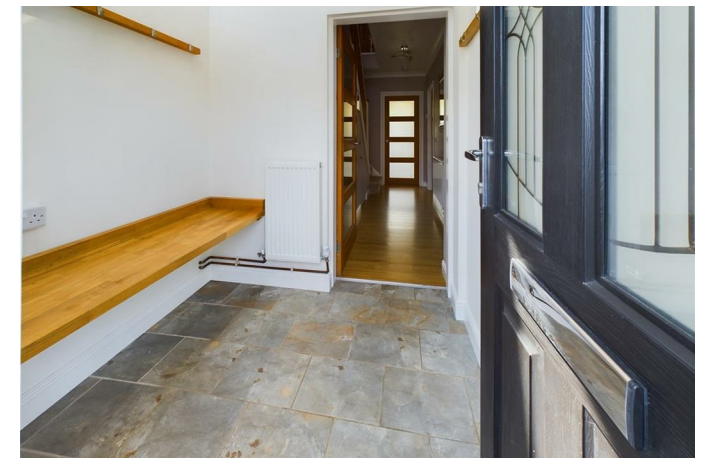
A beautifully presented, spacious four bedroom detached family home situated in a popular residential location within easy reach of all amenities in the highly regarded village of Duffield and noted Ecclesbourne School catchment. The property has the advantage of gas fired central heating and UPVC double glazing. Accommodation comprises: Entrance Porch, Entrance Hall, Guest Cloakroom with WC, Lounge with feature fireplace, Dining Room, Sun Lounge that sits proudly within the property and offers views over the beautifully landscaped rear garden, Fitted Kitchen with integrated dishwasher, space for fridge/freezer. Side Porch with large Utility Area offering space for washing machine and dryer. Four bedrooms, large and very modern en-suite shower room to master, and a spacious Family Bathroom. Driveway providing off road parking, single garage and lovely well proportioned gardens to rear.

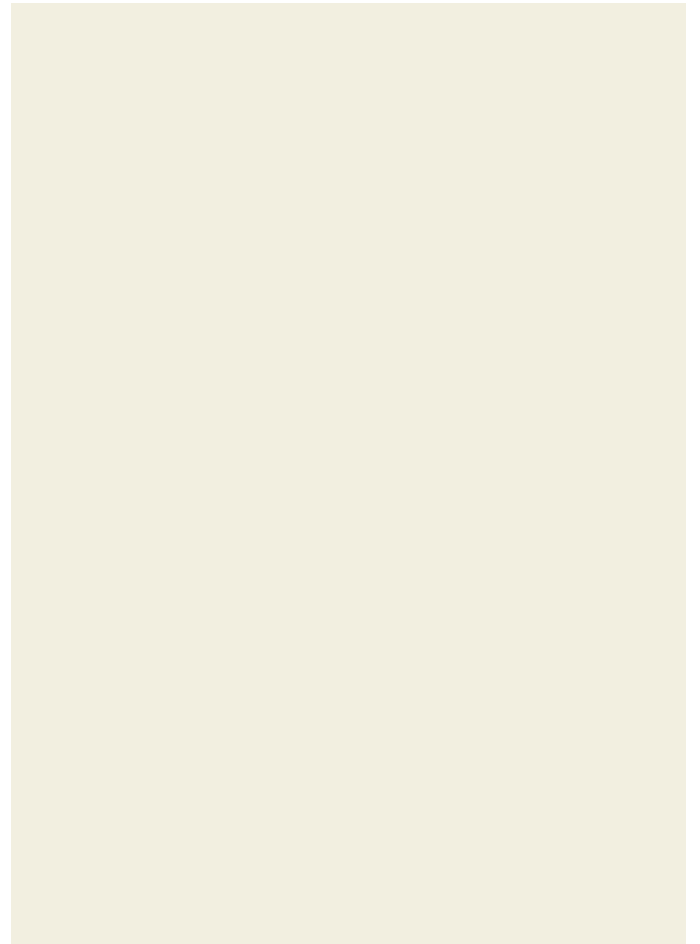
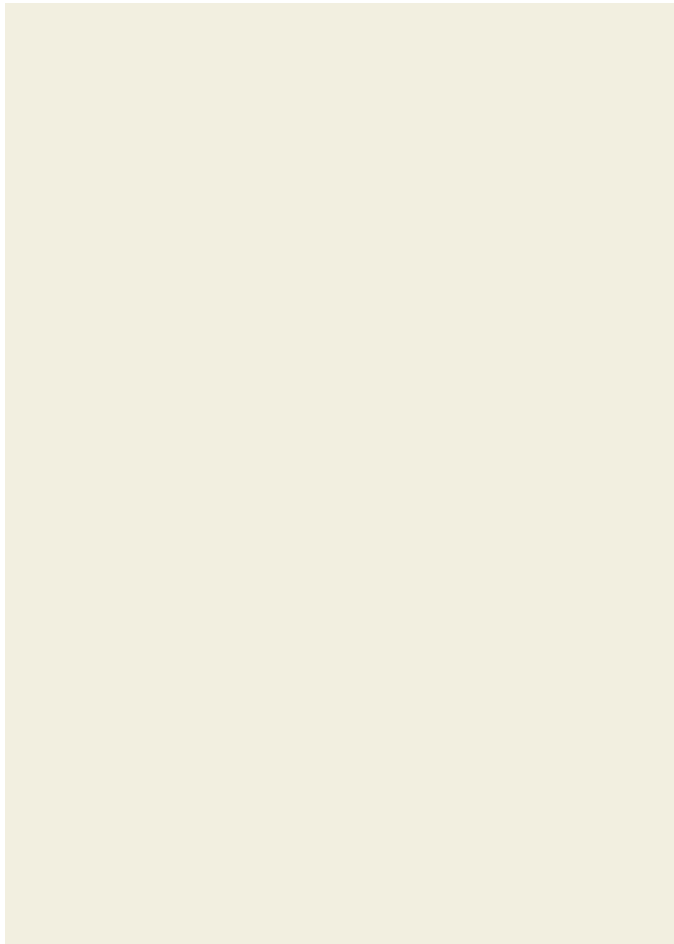
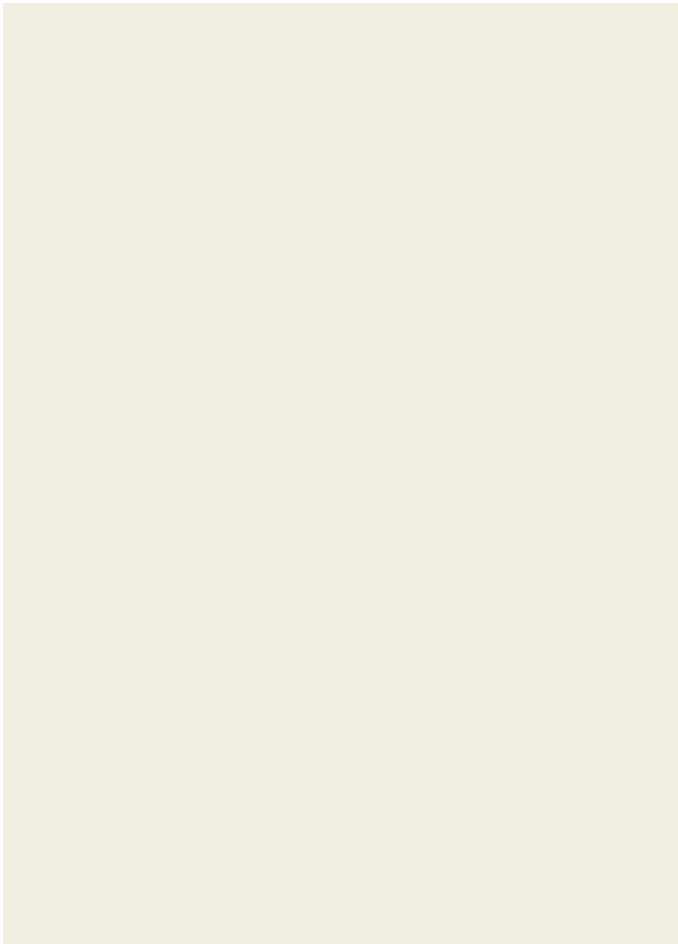
This property has been supremely extended and decorated to a high standard throughout. Viewing is advised to appreciate the property in its entirety.

Available late August 2024.

Video Tour and Floorplan to follow.

Long Term Let Available.





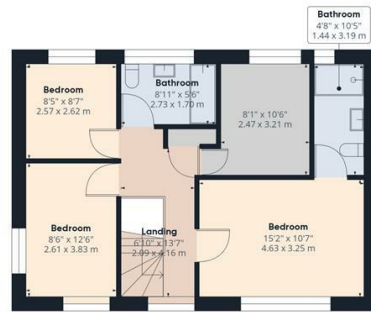
Duffield House
 Town Street
 Duffield
 Derbyshire
 DE56 4GD

T: 01332 843390

E: duffield@fletcherandcompany.co.uk
www.fletcherandcompany.co.uk



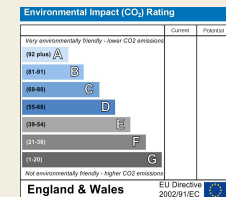
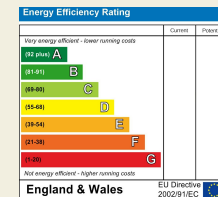
Approximate total area[®]
 1259.42 ft²
 117 m²



(1) Excluding balconies and terraces

While every attempt has been made to ensure accuracy, all measurements are approximate, not to scale. This floor plan is for illustrative purposes only.

GIRAFFE360



These particulars do not constitute an offer or a contract neither do they form part of an offer or contract. The vendor does not make or give and Messrs. Fletcher & Company nor any person employed has any authority to make or give any representation or warranty, written or oral, in relation to this property. Whilst we endeavour to make our sales details accurate and reliable, if there is any point which is of particular importance to you, please contact the office and we will be pleased to check the information for you, particularly if contemplating travelling some distance to view the property. None of the services or appliances to the property have been tested and any prospective purchasers should satisfy themselves as to their adequacy prior to committing themselves to purchase.

Fletcher & Company