



## 5 Bed House - Detached

Park View, 11 Vicarage Lane, Little Eaton, Derby DE21 5EA

Offers Around £1,180,000 Freehold



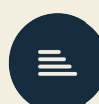
5



4



3



C

**Fletcher  
& Company**

[www.fletcherandcompany.co.uk](http://www.fletcherandcompany.co.uk)



- Beautiful Architect-Designed Detached Home
- Ecclesbourne School Catchment Area
- Duel-Aspect Lounge & Garden Room
- Dining Room & Self Contained Office
- Fitted Kitchen/Dining Room
- Utility Room & Cloakroom
- Five Bedrooms & Three Bathrooms
- South-Facing Gardens
- Block Paved Driveway & Double Garage
- A Short Walk to the Village Amenities, St Peters Park and Bluebell Woods

ECCLESBOURNE SCHOOL CATCHMENT AREA – Beautiful Architect-designed home, enjoying a fabulous location set within the Old Vicarage grounds overlooking the noted village park, walks into Bluebell Woods and a short walk to the village amenities.

#### The Location

Little Eaton is a convenient and sought after village location situated approximately 5 miles north of Derby City centre and offers a good range of local amenities to include Co-Op Store, newsagent, butcher, chemist, public houses, historic church and regular bus services. Little Eaton is well known for its Village Primary School and is within The Ecclesbourne Secondary School catchment area. Local recreational facilities are on St Peter's Park to include football, cricket, tennis courts, green bowls, children's playground and leisure pavilion. For those who enjoy the outdoor pursuits the nearby Drum Hill and Bluebell Woods provide some delightful scenery and walks. Transport links close by include easy access on to the A6, A38, A50 leading to the M1 motorway.

#### Accommodation

##### Ground Floor

##### Entrance Porch

9'0" x 6'4" (2.76 x 1.95)

With entrance door with inset window with leaded finish, oak flooring, high ceilings, spotlights to ceiling, fitted storage cupboards with chrome handles and fitted base cupboard, radiator and internal panelled door with stained glass with leaded finish opening into hallway.

##### Light & Spacious Hallway

23'3" x 11'10" (7.09 x 3.62)

With split-level staircase with attractive balustrade leading to first floor with under-stairs storage cupboard, high ceilings, spotlights to ceiling, wall lights and radiator.

##### Fitted Cloakroom

5'7" x 2'5" (1.71 x 0.75)

With low level WC, fitted corner washbasin with chrome fittings with fitted base cupboard underneath, fully tiled walls, oak flooring, extractor fan and internal panelled door with chrome fittings.

### Duel-Aspect Lounge

29'4" x 17'1" x 10'8" (8.95 x 5.23 x 3.26)

Enjoying fine views towards of St Peter's Park and beyond with fireplace with log burning gas fire and raised granite hearth, vaulted ceilings, solid oak wood flooring and skirting boards, two radiators, double glazed bi-folding doors opening onto paved patio and south-facing garden, three double glazed windows all having leaded finish, triangular shaped double glazed featured window complemented by a high vaulted sealed unit double glazed window above the fireplace, fitted wall lights and internal double opening panelled doors.



### Dining Room

15'1" x 11'6" (4.61 x 3.52)

With solid oak wood flooring, wood skirting boards and architraves, high ceilings, spotlights to ceiling, radiator, large double glazed bay window with deep windowsill, fitted wall lights and open square archway.



### Garden Room

10'5" x 10'4" (3.18 x 3.17)

With solid wood flooring, radiator, exposed brickwork, two double glazed windows with leaded finish, views over landscaped gardens and attractive St Peter's Park, double glazed sliding doors opening onto raised patio/terraced area providing a pleasant sitting out and entertaining space and internal half glazed door.



### Self Contained Office

17'2" x 15'0" (5.24 x 4.59)

This office offers access from the property and also its own private entry. With brick fireplace incorporating log burning stove and raised quarry tiled hearth, solid wood flooring, high ceilings, spotlights to ceiling, radiator, two double glazed windows both having leaded finish, private stable door giving access to the garden and internal panelled door giving access to the property.



### Inner Lobby

With radiator, split-level staircase leading to hallway, two double glazed windows both having leaded finish and useful walk-in storage cupboard.

### Walk-In Storage Cupboard

6'5" x 3'9" (1.96 x 1.15)

With double opening doors, fitted shelving and solid wood flooring.

### Beautifully Fitted Kitchen Diner

15'1" x 11'5" (4.60 x 3.49)

With a comprehensive range of fitted units with inset one and a half stainless steel sink unit with chrome mixer tap, base units with drawer and cupboard fronts, tiled splash-backs, wall and base fitted units with attractive matching granite worktops, built-in stainless steel Bosch five ring gas hob with stainless steel extractor hood over, built-in stainless steel Bosch double electric fan assisted oven, integrated Bosch dishwasher, integrated Bosch fridge/freezer, tiled flooring, high ceilings, radiator, two double glazed windows both having leaded finish and attractive matching tiled sills, pleasant aspect over landscaped private gardens, concealed worktop lights and internal panelled door.



### Fitted Utility Room

13'8" x 8'9" into recess x 5'6" (4.19 x 2.69 into recess x 1.68)

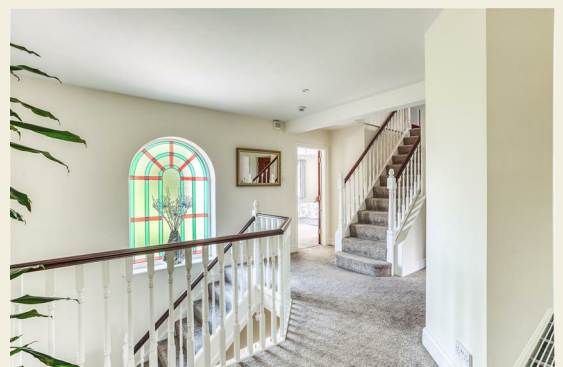
Matching the units in the kitchen with single stainless steel sink unit with mixer tap, base units with drawer and cupboard fronts, tiled splash-backs, wall and base fitted units with matching worktops, radiator, matching tiled flooring, spotlights to ceiling, high ceiling, double glazed stable door giving access to raised patio/terraced area and private gardens, American style Samsung fridge/freezer with drinks dispenser (negotiable on sale), built-in stainless steel microwave, concealed space for plumbing for automatic washing machine and tumble dryer and integral door giving access to double garage.



### First Floor

#### Landing

With matching attractive balustrade, high ceilings, spotlights to ceiling, radiator, featured double glazed arched stained glass window, triangular shaped double glazed window with views over St Peter's Park and beyond, built-in cupboard housing the high-efficiency hot water cylinder and second staircase with matching attractive balustrade leading to second floor.





### Double Bedroom One

15'2" x 11'5" (4.63 x 3.50)

With fine views across the noted St Peter's Park and beyond, high ceilings, built-in double wardrobe with double opening panelled doors, radiator, fitted wall lights, two double glazed windows both having leaded finish, fitted corner chest of drawers, fitted bedhead with matching fitted bedside cabinets and internal panelled door.



### Fitted Wardrobe Area

5'8" into wardrobes x 5'3" into wardrobes (1.74 into wardrobes x 1.62 into wardrobes )

With fitted wardrobes with inset mirrors and fitted base cupboards and spotlights to ceiling.

### Fitted En-Suite

5'6" x 5'5" (1.69 x 1.66)

With separate corner shower cubicle with chrome fittings including shower, fitted washbasin with chrome fittings with fitted base cupboard underneath, low level WC, fully tiled walls with matching tiled flooring, heated chrome towel rail/radiator, two wall mounted fitted mirrored medicine cabinets, spotlights to ceiling, double glazed obscure window and internal panelled door with chrome fittings.



### Double Bedroom Two

11'8" x 10'11" into wardrobes (3.56 x 3.34 into wardrobes )

With three fitted double wardrobes, high ceilings, radiator, double glazed window and internal panelled door.



### Double Bedrooms Three

11'5" x 7'6" (3.50 x 2.29)

With exposed wood floors, high ceilings, radiator, double glazed window and internal panelled door.



### Fitted Family Bathroom

8'5" x 6'9" (2.59 x 2.06)

With bath with chrome fittings including chrome hand shower attachment, fitted washbasin with chrome fittings with fitted base cupboard underneath, low level WC, fully tiled walls, matching tiled flooring, wall mounted mirror, spotlights to ceiling, high ceilings, heated chrome towel rail/radiator, double glazed obscure window and internal panelled door.



### Second Floor Landing/Sitting Area

11'8" x 11'5" (3.56 x 3.50)

With exposed wood floors, radiator, double glazed Velux window to side, double glazed window, attractive balustrade and featured vaulted ceilings.



### Double Bedroom Four

14'0" x 11'10" (4.29 x 3.61)

With exposed wood floors, featured vaulted ceilings, radiator, triangular shaped double glazed window, fine views across St Peter's Park and beyond, storage into eaves and internal panelled door.



### Storage Into Eaves

7'10" approximately x 4'11" approximately (2.39 approximately x 1.51 approximately)

With wood flooring and double glazed triangular window.

### Double Bedroom Five

14'7" x 11'4" (4.45 x 3.47)

With exposed wood floors, featured vaulted ceilings, radiator, triangular shaped double glazed window, fine views across St Peter's Park and beyond and internal panelled door.





### Fitted Shower Room

6'3" x 5'6" (1.91 x 1.69)

With separate corner shower cubicle with chrome fittings including shower, fitted washbasin with chrome fittings with fitted base cupboard underneath, low level WC, fully tiled walls with matching tiled flooring, wall mounted mirrored medicine cabinet, spotlights to ceiling, heated chrome towel rail/radiator, double glazed Velux window and internal panelled door.



### Landscaped South-Facing Gardens

The property is complemented by landscaped gardens enjoying views across St Peter's Park and beyond. The garden has been divided into several areas including shaped lawns with a varied selection of shrubs, plants, featured specimen tree, attractive Monkey tree, raised paved patio from the bi-folding doors in the lounge with attractive pitched roof storm canopy over and complemented by chrome handrail, patio with wood frame pergola over, rockery incorporating wildlife/fishpond and waterfall. A further large patio/terraced area off the garden room providing a lovely sitting out and entertaining space with a warm, sunny aspect complemented by a brick wall (ideal for parties and BBQ's).



### Summer House with Attached Store

#### Driveway

A double width block paved driveway provides car standing spaces for approximately five/six cars. Electric Car Charger.

## Integrated Double Garage

20'8" into recess x 16'11" (6.30 into recess x 5.16)

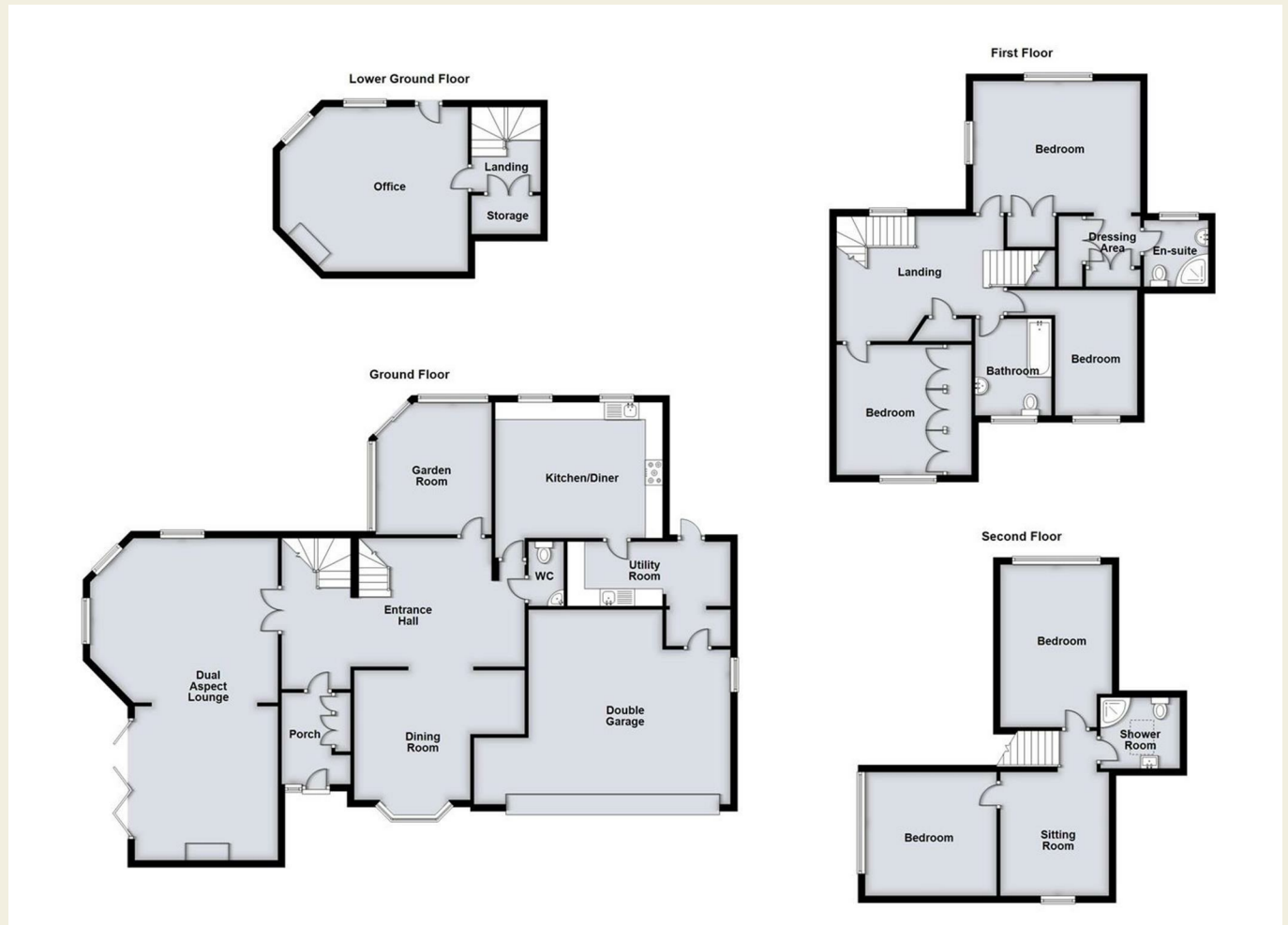
With concrete floor, power and lighting, boiler, integral door giving access to property and electric roll up front door.

## Security

CCTV Installed. & House Alarm.

## Council Tax - G


Erewash



These particulars do not constitute an offer or a contract neither do they form part of an offer or contract. The vendor does not make or give and Messrs. Fletcher & Company nor any person employed has any authority to make or give any representation or warranty, written or oral, in relation to this property. Whilst we endeavour to make our sales details accurate and reliable, if there is any point which is of particular importance to you, please contact the office and we will be pleased to check the information for you, particularly if contemplating travelling some distance to view the property. None of the services or appliances to the property have been tested and any prospective purchasers should satisfy themselves as to their adequacy prior to committing themselves to purchase.



## Energy Efficiency Rating

	Current	Potential
<i>Very energy efficient - lower running costs</i>		
(92 plus) <b>A</b>		
(81-91) <b>B</b>		
(69-80) <b>C</b>	74	77
(55-68) <b>D</b>		
(39-54) <b>E</b>		
(21-38) <b>F</b>		
(1-20) <b>G</b>		
<i>Not energy efficient - higher running costs</i>		
<b>England &amp; Wales</b>	EU Directive 2002/91/EC	

## Environmental Impact (CO<sub>2</sub>) Rating

	Current	Potential
<i>Very environmentally friendly - lower CO2 emissions</i>		
(92 plus) <b>A</b>		
(81-91) <b>B</b>		
(69-80) <b>C</b>		
(55-68) <b>D</b>		
(39-54) <b>E</b>		
(21-38) <b>F</b>		
(1-20) <b>G</b>		
<i>Not environmentally friendly - higher CO2 emissions</i>		
<b>England &amp; Wales</b>	EU Directive 2002/91/EC	