



5 Bed House - Detached

Cumberhills Road
Duffield
Belper
DE56 4HA

£2,950 Per Calendar Month

Fletcher
& Company

Cumberhills Road Belper DE56 4HA



- AVAILABLE NOW • FULLY FURNISHED • PETS CONSIDERED • ECCLESBOURNE SCHOOL CATCHMENT AREA • SHORT AND LONG TERM LETS AVAILABLE • GREAT ROAD NETWORKS • CLOSE TO DUFFIELD, BELPER AND DERBY • QUIET AND PEACEFUL LOCATION • STYLISHLY PRESENTED • NEAR OPEN COUNTRYSIDE

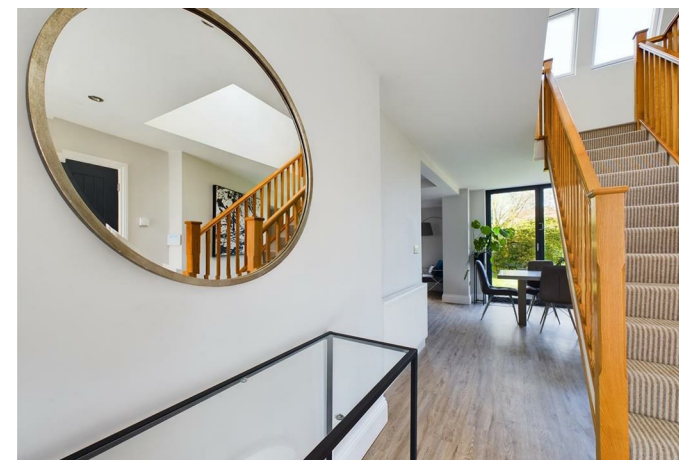
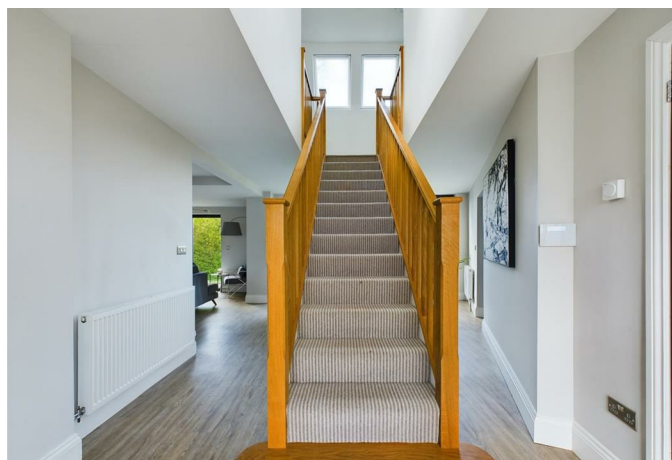
ECCLESBOURNE SCHOOL CATCHMENT AREA AND AVAILABLE IMMEDIATELY – A highly attractive, recently refurbished, fully-furnished 4-5 bedroom detached property that benefits from a very generous plot size. Southfields is set within this highly desirable location on Cumberhills Road situated within easy reach of all local amenities in Duffield and within a few minutes walk of Ecclesbourne Secondary School and countryside.

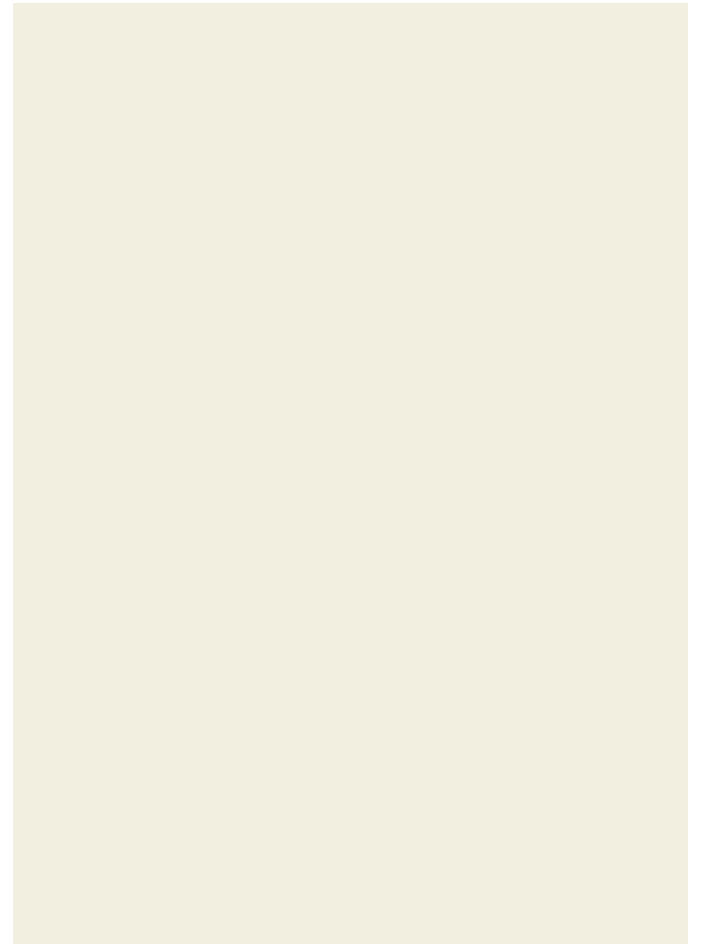
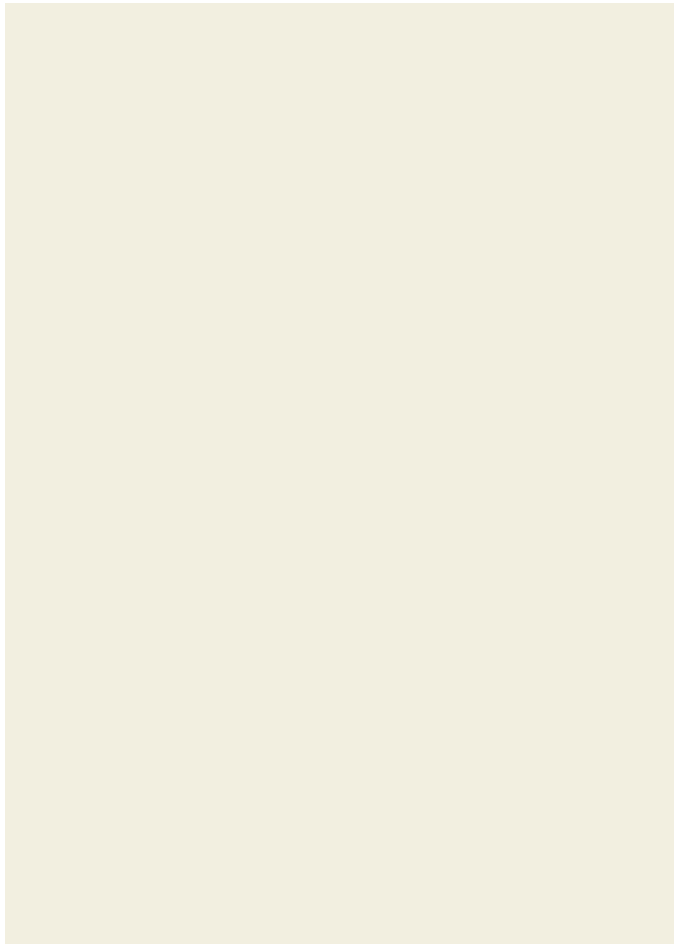
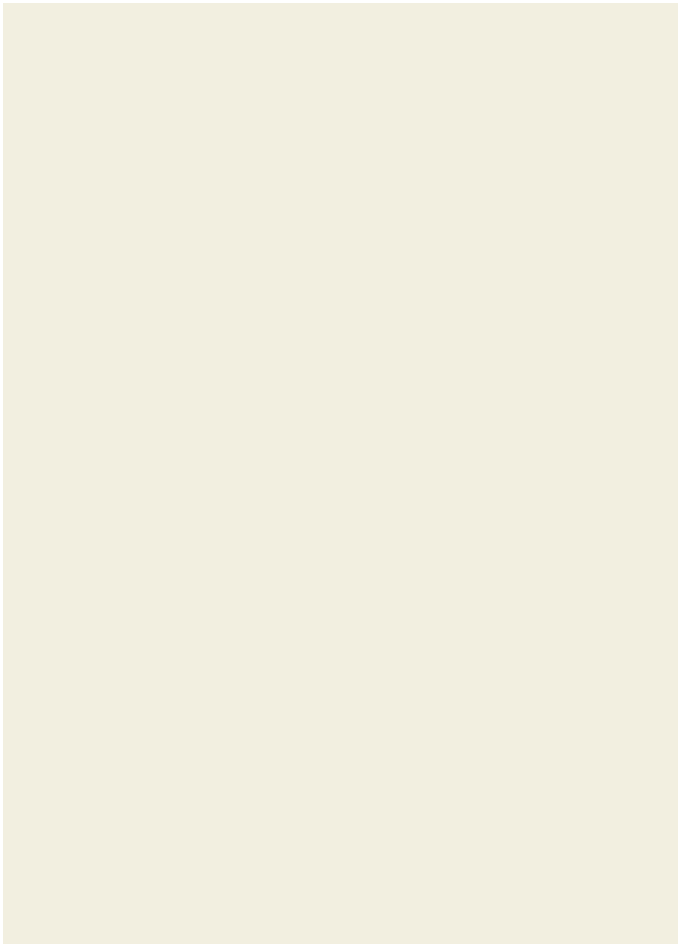
The ground-floor, in brief, comprises of; a large open plan downstairs living area, an extremely modern looking kitchen with integrated appliances, and the ability for flexible living owing to a very fluid layout that suits a variety of needs. There is a separate utility and downstairs WC. There are great views out of the bi-fold doors giving access to a very generous rear garden and offering nice and pleasant views. The first floor offers four generous bedrooms and a family bathroom, the master bedroom has an en-suite.

The property is neutrally decorated throughout and offers a no expense spared look and feel.

To the front of the property is an well laid driveway which has space for several vehicles to park securely and off road. Cumberhills Road is situated off a quiet cul-de-sac but benefits from being in a superb local for all required.

AVAILABLE NOW.

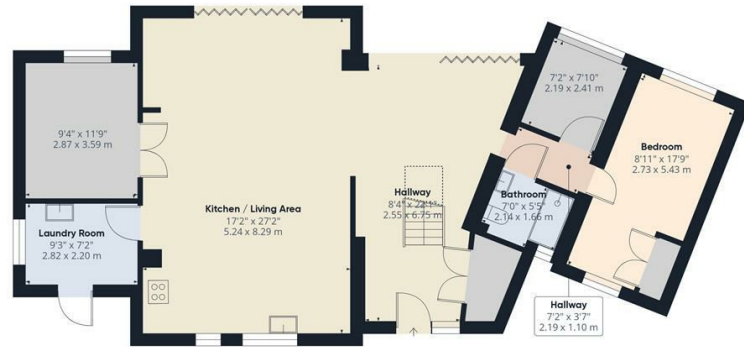




Duffield House
 Town Street
 Duffield
 Derbyshire
 DE56 4GD

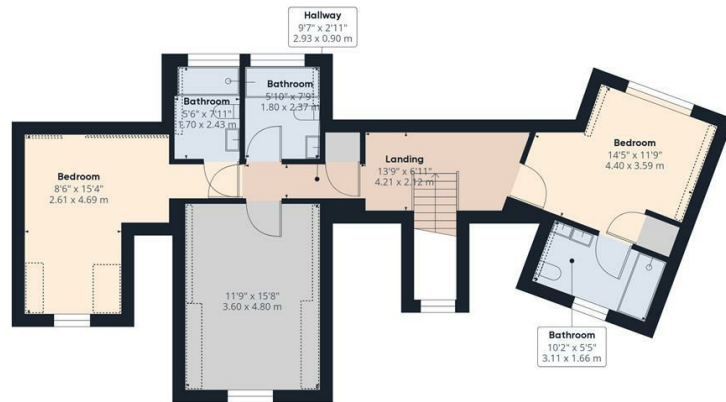
T: 01332 843390

E: duffield@fletcherandcompany.co.uk
 www.fletcherandcompany.co.uk



Approximate total area⁽¹⁾
 2032.95 ft²
 188.87 m²

Reduced headroom
 85.03 ft²
 7.9 m²

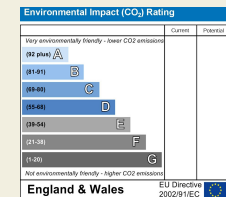
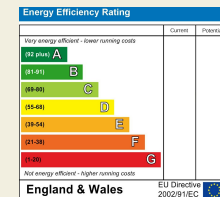


(1) Excluding balconies and terraces

Reduced headroom
 (below 1.5m/4.92ft)

While every attempt has been made to ensure accuracy, all measurements are approximate, not to scale. This floor plan is for illustrative purposes only.

GIRAFFE360



These particulars do not constitute an offer or a contract neither do they form part of an offer or contract. The vendor does not make or give and Messrs. Fletcher & Company nor any person employed has any authority to make or give any representation or warranty, written or oral, in relation to this property. Whilst we endeavour to make our sales details accurate and reliable, if there is any point which is of particular importance to you, please contact the office and we will be pleased to check the information for you, particularly if contemplating travelling some distance to view the property. None of the services or appliances to the property have been tested and any prospective purchasers should satisfy themselves as to their adequacy prior to committing themselves to purchase.

Fletcher
 & Company