

Fletcher & Company

323 Over Lane, Belper, Derbyshire, DE56 0HJ

Price £215,000

Freehold



- Superbly Positioned Split-Level Detached Bungalow
- Impressive Views Over Open Fields & Beyond
- Double Glazing & Electric Storage Heating
- Porch/Utility, Entrance Hall
- Breakfast Kitchen
- Lounge & Conservatory
- Side Porch
- One Bedroom & Shower Room
- Driveway to Front
- Delightful Rear Garden with Fine Views





Summary

OPEN VIEWS - Superbly positioned, one bedroom detached split-level bungalow occupying a fine position affording most impressive open views over neighbouring fields.

This is a rare opportunity to acquire a superbly positioned one bedroom detached bungalow on Over Lane affording magnificent open views over neighbouring fields.

The property is accessed via a shared driveway which culminates in ample off road car standing. To the rear of the property is a mainly lawned garden with upper-level patio areas, ideal for appreciating the view.

Internally, the property is double glazed with electric storage heating and features a porch/utility, hallway, breakfast kitchen, lower-level lounge and conservatory, side porch, bedroom and shower room.

F&C

The Location

The property's location on the outskirts of the sought-after market town of Belper, offers a superb selection of amenities including a varied selection of shops, supermarkets and river gardens with a regular bus service to Derby and pleasant walks in the surrounding open countryside.

Accommodation

Entrance Porch/Utility

7'9" x 5'9" (2.37 x 1.76)

uPVC double glazed entrance door with matching side lights provides access into the porch/utility with worktop, cupboard, appliance space suitable for a washing machine and panelled and glazed door into the hallway.

Hallway

7'8" x 2'6" (2.35 x 0.78)

With electric storage heater, decorative coving with ceiling rose and door to the breakfast kitchen.

Breakfast Kitchen

12'0" x 10'2" (3.68 x 3.10)

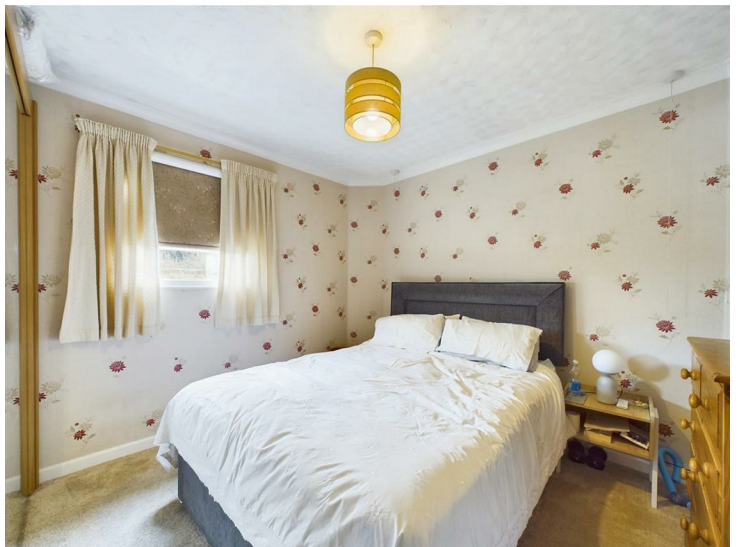
With a U-shaped granite effect preparation surface and tiled surrounds, inset sink unit, fitted base cupboards and drawers with a complementary range of wall mounted cupboards, inset four plate electric hob, built-in oven, appliance space suitable for a fridge and freezer, electric storage heater, decorative coving and double glazed window to the front.



Bedroom

10'4" x 8'11" (3.15 x 2.74)

With electric storage heater, built-in wardrobe and double glazed window to the side.



Shower Room

7'10" x 5'8" (2.41 x 1.75)

With a suite comprising low flush WC, pedestal wash handbasin, bidet, shower cubicle with Mira shower, electric storage heater, double glazed window to the front and airing cupboard.



Lounge

13'4" x 11'11" (4.08 x 3.65)

Steps lead down to a lower-level lounge with electric storage heater, decorative coving with ceiling rose, double glazed window to the rear and panelled and double glazed door opening into the conservatory.



Conservatory

9'2" x 8'8" (2.81 x 2.65)

A brick based and uPVC double glazed construction offering fabulous views over the garden and open fields beyond.



Side Lobby

6'10" x 6'7" (2.09 x 2.01)

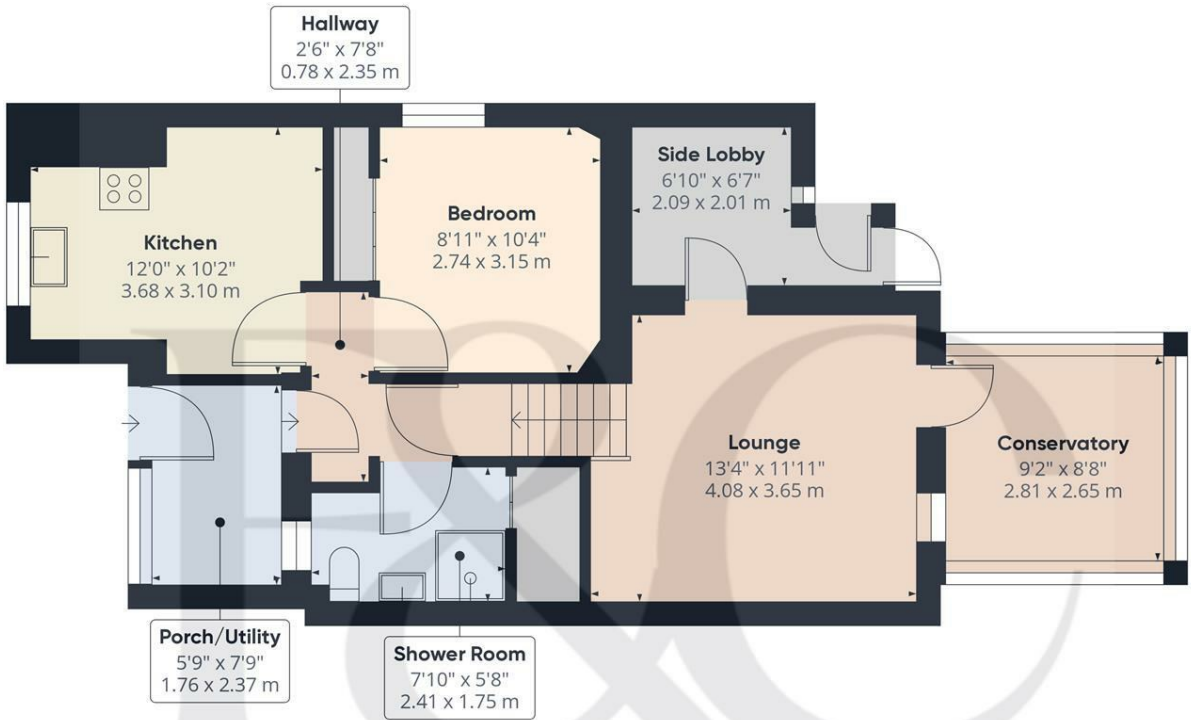
With tiled floor and double glazed door to the garden.

Outside

The property is accessed via a shared driveway with off road parking to the front of the dwelling. To the rear of the property is an impressive garden with upper-level patio/seating areas, extensive lawn, timber fencing and fabulous views over the open fields beyond.



Council Tax Band B - Amber Valley



Approximate total area⁽¹⁾
 669.78 ft²
 62.22 m²

(1) Excluding balconies and terraces

While every attempt has been made to ensure accuracy, all measurements are approximate, not to scale. This floor plan is for illustrative purposes only.

GIRAFFE 360



Duffield Office

Duffield House
Town Street
Duffield
Derbyshire
DE56 4GD

01332 843390
duffield@fletcherandcompany.co.uk

Derby Office

15 Melbourne Court
Millennium Way
Pride Park
Derby
DE24 8LZ

01332 300558
derby@fletcherandcompany.co.uk

323 Over Lane
Belper
Derbyshire
DE56 0HJ

Council Tax Band: B
Tenure: Freehold



Energy Efficiency Rating

	Current	Potential
Very energy efficient - lower running costs		
(92 plus) A		
(81-91) B		87
(69-80) C		
(55-68) D	54	
(39-54) E		
(21-38) F		
(1-20) G		
Not energy efficient - higher running costs		
England & Wales	EU Directive 2002/91/EC	