



5 Bed House

4 Spinney Rise
Toton
Nottingham
NG9 6JN

£2,650 Per Calendar Month

Fletcher
& Company

4 Spinney Rise Nottingham NG9 6JN



- AVAILABLE IMMEDIATELY • PETS CONSIDERED • LONG-TERM LET AVAILABLE
- EN-SUITE TO MASTER BEDROOM AND WALK IN WARDROBE
- CLOSE TO MAJOR ROAD NETWORKS AND LOCAL AMENITIES
- FAMILY BATHROOM WITH SHOWER OVER BATH
- NEW THROUGHOUT - NEW KITCHEN, CARPETS AND BATHROOMS
- SUPERB OFF ROAD PARKING
- SUPERB FAMILY SIZED REAR GARDEN
- SUPERBLY EXTENDED AND PRESENTED PROPERTY

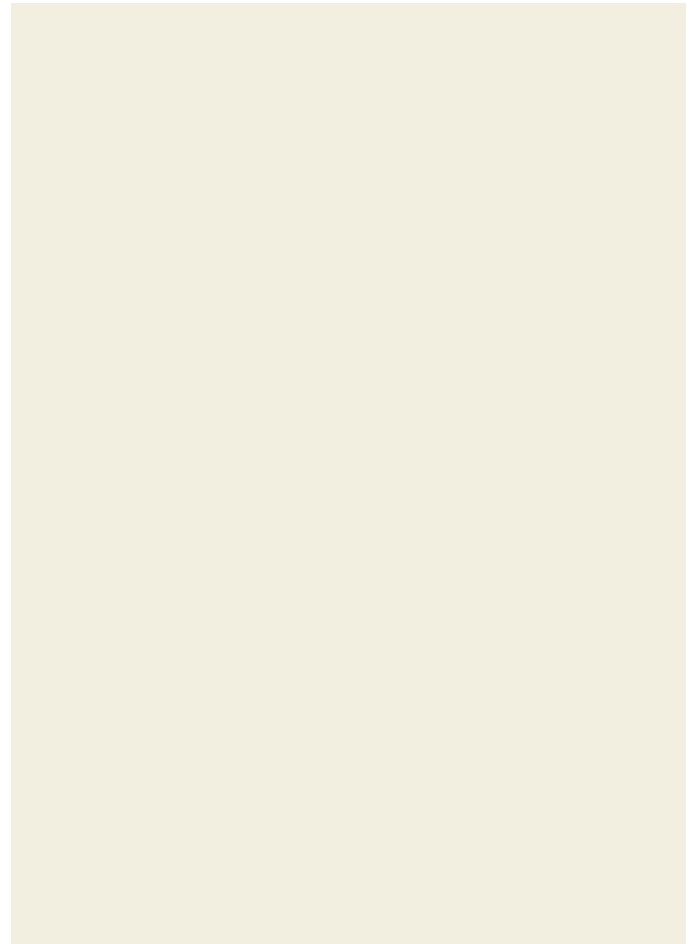
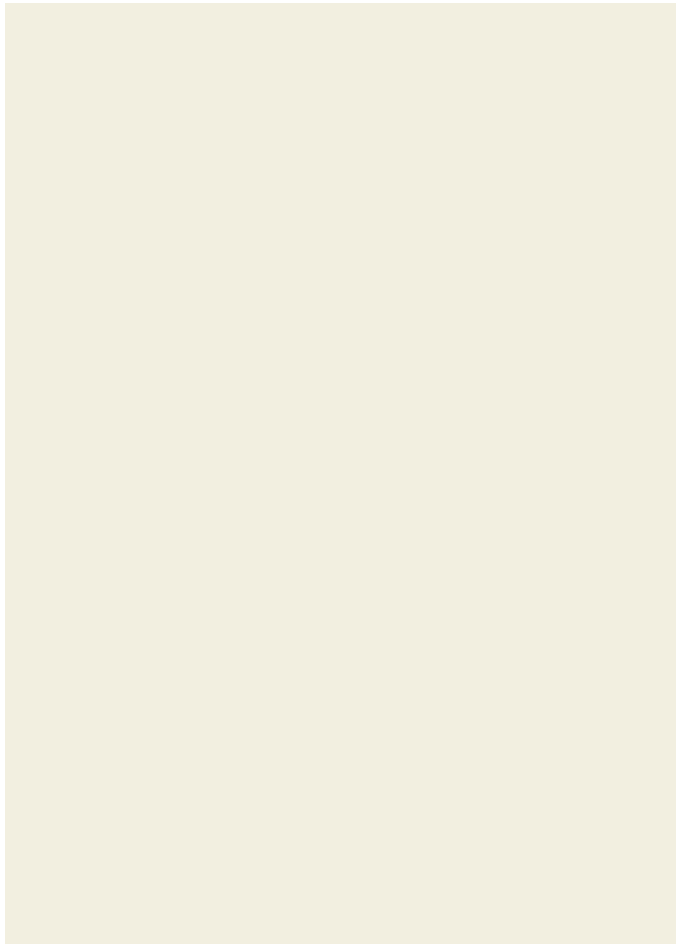
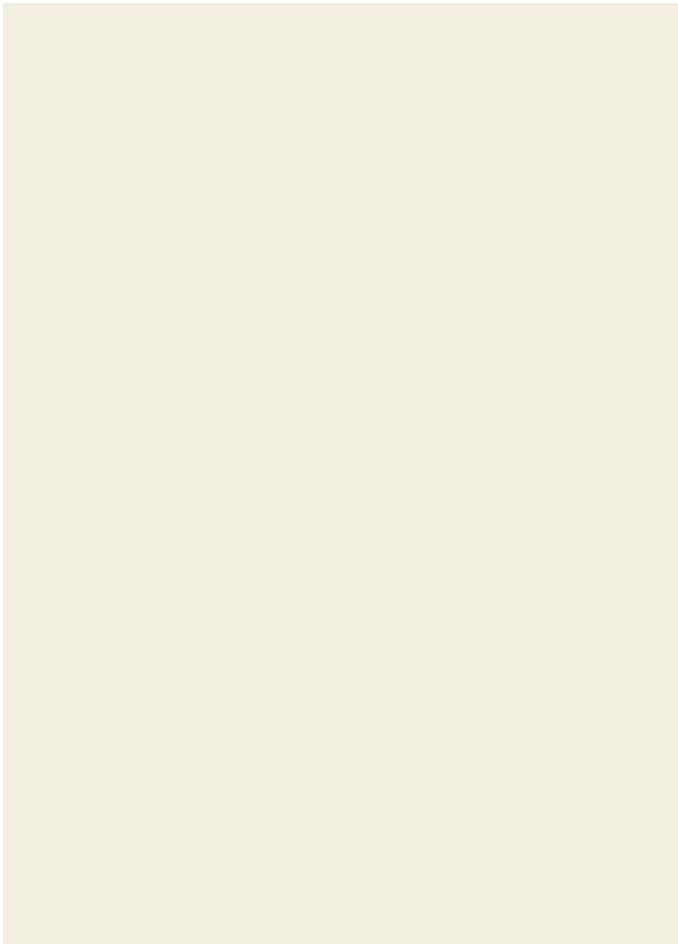
A superbly refurbished, extended and presented 4/5 bedroom home that is finished to the highest standard, that offers kerb appeal. This property boasts almost 1200 sq ft of space.

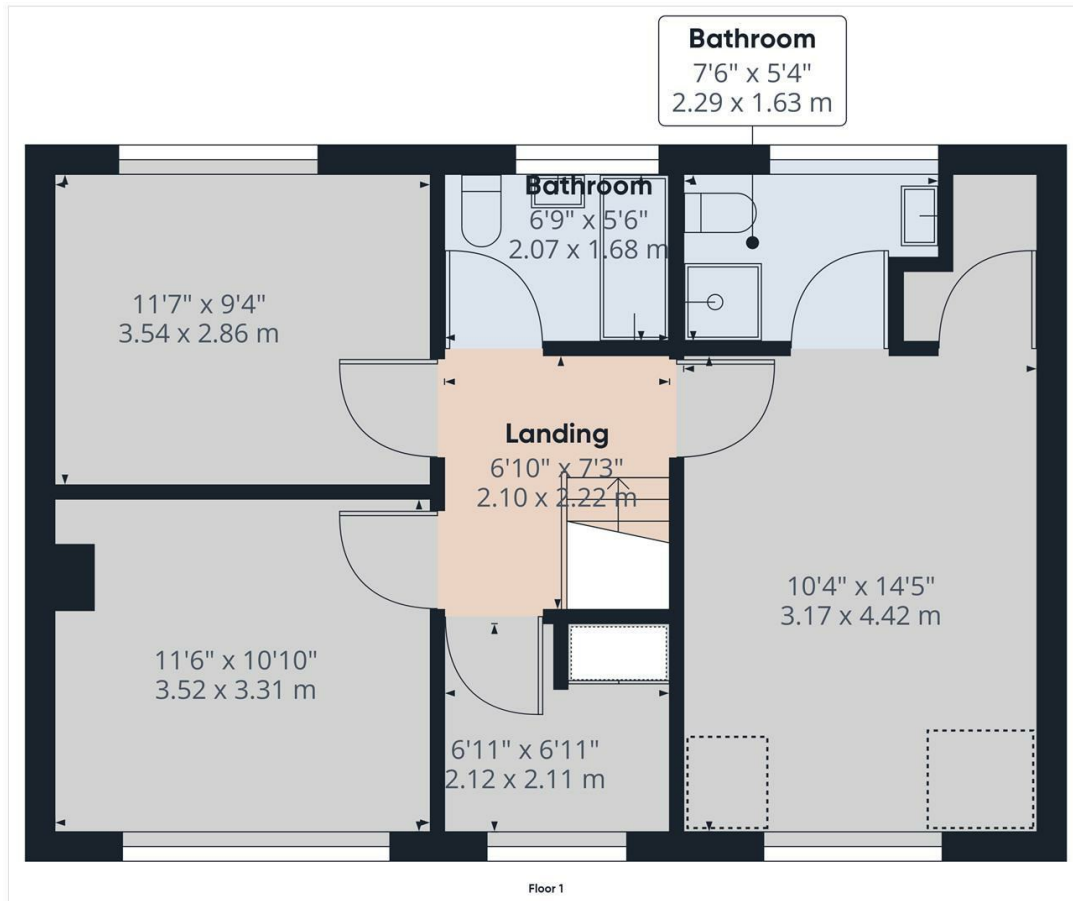
This semi-detached property briefly comprises of a nicely sized reception hall, living room/ lounge, superbly fitted and extremely stylish kitchen/ diner with integrated appliances, the dining area is vast and neatly merges into a sitting/ garden room which perfectly sits and leads into the the rear garden. Also on the ground floor is a further reception room that perfectly lends itself to a double bedroom.

To the first floor the landing nicely guides you to four generous bedrooms, the main bedroom benefits from a stylishly presented en-suite and further benefits from a walk in wardrobe for added and thoughtful storage solutions. The family bathroom is extremely well thought out and is fitted to a high standard. The property is decorated in a clean white colour throughout and has superb floor coverings. The property further benefits from LED lighting throughout that offers even more stylish appeal to this stunning property.

This property is like brand new, offers great space throughout and is available on a short, or long term contract. pets are considered.







Approximate total area⁽¹⁾
572.32 ft²
53.17 m²

Reduced headroom
15.53 ft²
1.44 m²

(1) Excluding balconies and terraces

☐ Reduced headroom
(below 1.5m/4.92ft)

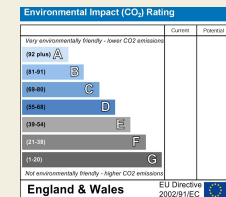
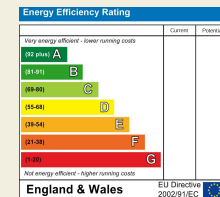
While every attempt has been made to ensure accuracy, all measurements are approximate, not to scale. This floor plan is for illustrative purposes only.

GIRAFFE360

Duffield House
Town Street
Duffield
Derbyshire
DE56 4GD

T: 01332 843390

E: duffield@fletcherandcompany.co.uk
www.fletcherandcompany.co.uk



These particulars do not constitute an offer or a contract neither do they form part of an offer or contract. The vendor does not make or give and Messrs. Fletcher & Company nor any person employed has any authority to make or give any representation or warranty, written or oral, in relation to this property. Whilst we endeavour to make our sales details accurate and reliable, if there is any point which is of particular importance to you, please contact the office and we will be pleased to check the information for you, particularly if contemplating travelling some distance to view the property. None of the services or appliances to the property have been tested and any prospective purchasers should satisfy themselves as to their adequacy prior to committing themselves to purchase.

Fletcher
& Company