



2 Bed Cottage

4 Brick Row, Darley Abbey, Derby DE22 1DQ
Offers Around £280,000 Freehold



2



1



1



D

Fletcher
& Company

www.fletcherandcompany.co.uk

- Charming Three Storey Cottage
- Wealth of Character & Charm
- Highly Sought After Conservation Area
- Ecclesbourne School Catchment Area
- Beautiful Lounge & Dining Kitchen
- Two Double Bedrooms
- Spacious Bathroom with Roll-Top Bath
- Enclosed Courtyard Style Rear Garden
- Brick Built Outbuilding
- Close to Darley Abbey Mills & Darley Park

CLOSE TO DARLEY PARK - NO UPWARD CHAIN - A superb opportunity to acquire a very charming two double bedroom three storey, Grade II Listed terrace cottage of style and character located in a very convenient and sought after location within a short walk to the beautiful Darley Park and Darley Abbey Mills.

The property is set back from the pavement edge and is constructed of brick beneath a roof of slate with the front elevation having an attractive appearance relieved by sash style period windows. The property enjoys many character features comprising, beams to ceiling, pine cupboards, fireplaces, sash windows and internal latched doors with black iron.

An internal inspection will reveal gas central heating living accommodation and in brief comprises, on the ground floor, charming lounge with mutli-burner stove, breakfast kitchen and trap door leading to cellar. The first floor landing leads to double bedroom one and four piece bathroom with feature roll top bath. The second floor landing leads to the second spacious double bedroom.

To the rear of the property there is a character garden paved courtyard style rear garden with mature planted borders and a good sized brick built store. This property is offered with no upward chain.

LOCATION

Darley Abbey village is a very convenient and much sought after residential area situated approximately 1 mile from Derby City centre and offers a general store, historic St Matthew's Church, reputable public houses and regular bus services.

Darley Abbey is noted for being on the doorstep of the beautiful Darley Park providing pleasant riverside walks along the banks of the River Derwent and also has easy access to Allestree Park with its golf course and fishing lake only 1 mile away.

Excellent educational facilities are close to hand to include the reputable village primary school (Walter Evans) and it is in the noted Ecclesbourne School catchment area located in Duffield. Furthermore private education is also available in the village at the Old Vicarage.

Excellent transport links are close by with fast access onto the A6, A38, A50 and A52 leading to the M1 motorway. The location is convenient for Pride Park, the University of Derby, Royal Derby Hospital, Rolls-Royce, Derby Railway Station and Toyota.

A further point of note is that the Derwent Valley in which the village of Darley Abbey is situated is one of the few World Heritage Sites.

THE ACCOMMODATION

GROUND FLOOR

Lounge

15'1" x 11'8" (4.62 x 3.56)

Having chimney breast incorporating a multi-burner stove with inset oak mantle and raised stone hearth, wood skirting boards and architraves, high ceiling, central heating radiator, feature floor-to-ceiling display cabinet with shelving, sash period style window with aspect to the front and internal latched door with black iron.



Dining Kitchen

11'3" x 8'9" (3.43 x 2.67)

Having a porcelain single sink unit with period style chrome mixer tap, base units with drawer and cupboard fronts, tiled splash-backs, wall and base fitted units with matching worktops, concealed worktop lights, space for Rangemaster dual fuel cooker with extractor hood over and plumbing for automatic washing machine. Central heating radiator, tiled flooring, wood skirting boards, wall mounted plate rack, concealed Worcester combination boiler, sash period style window with aspect over the rear garden and half glazed glass panelled door giving access to the rear garden.



Vaulted Cellar

12'0" x 10'7" (3.66 x 3.23)

Accessed via a trap door and providing storage with light, central heating radiator and coal/wood shoot.

FIRST FLOOR

Landing

With wood skirting boards architraves and staircase leading to the second floor.

Double Bedroom One

11'10" x 11'8" (3.61 x 3.56)

Having a chimney breast, wood skirting boards and architraves, central heating radiator, fitted double pine cupboard with drawers beneath, additional pine cupboard with doors, sash period style window with aspect to the front and latched internal door with black iron.



Spacious Bathroom

11'3" x 6'2" (3.43 x 1.88)

Fitted with a white four-piece period suite comprising a slipper bath with chrome feet, pedestal wash hand basin, low level WC with polished wood seat and a separate corner shower cubicle with electric shower. Tiled splash-backs, central heating radiator, feature wood effect flooring, wood skirting boards and architraves, high ceiling, useful understairs storage cupboard, obscure sash style window with aspect to the rear and internal latched door with black iron.



SECOND FLOOR LANDING

With built-in cupboard with latched door and light.

Loft Storage Cupboard

11'4 x 4'3 into eaves (3.45m x 1.30m into eaves)

Providing useful loft storage accessed off the second floor landing.

Double Bedroom Two

15'1" x 11'5" (4.62 x 3.48)

Having a chimney breast with feature period style display fireplace with raised tiled hearth, wood skirting boards and architraves, high ceiling, revealed beams to ceiling, fitted cupboard/wardrobe with base cupboards beneath, central heating radiator, sash period window with views towards Darley Abbey Mills with its historic chimney and internal latched door with black iron.



OUTSIDE

Enclosed Rear Garden

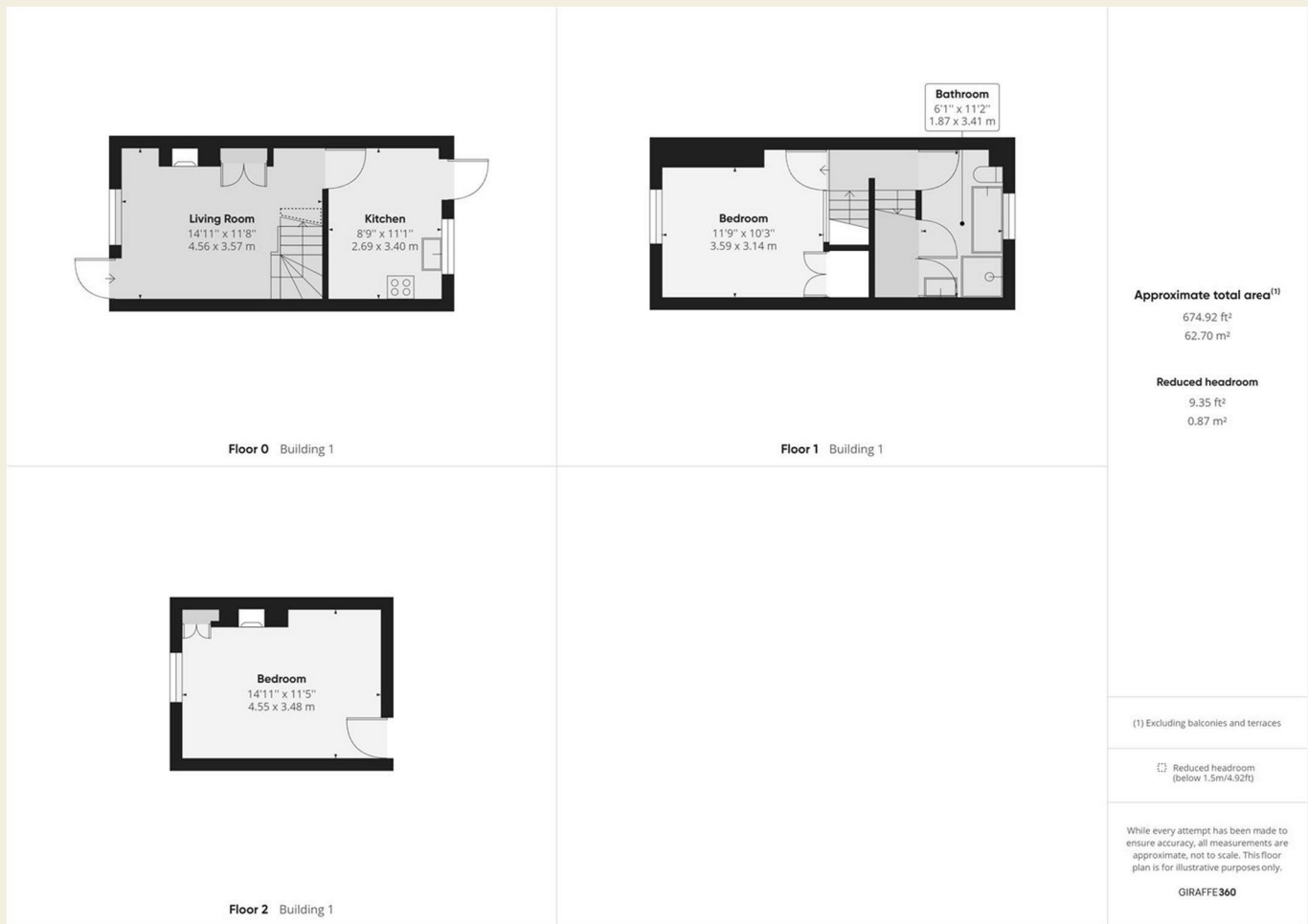
To the rear of the property there is a garden measuring approximately 28' x 14' with mature planted borders, stone paving, feature bay tree and outside light.



Brick Built Outbuilding
 15'3 x 4'1 (4.65m x 1.24m)
 Providing good storage.




Council Tax - C
Derby City



These particulars do not constitute an offer or a contract neither do they form part of an offer or contract. The vendor does not make or give and Messrs. Fletcher & Company nor any person employed has any authority to make or give any representation or warranty, written or oral, in relation to this property. Whilst we endeavour to make our sales details accurate and reliable, if there is any point which is of particular importance to you, please contact the office and we will be pleased to check the information for you, particularly if contemplating travelling some distance to view the property. None of the services or appliances to the property have been tested and any prospective purchasers should satisfy themselves as to their adequacy prior to committing themselves to purchase.

Energy Efficiency Rating

	Current	Potential
<i>Very energy efficient - lower running costs</i>		
(92 plus) A		
(81-91) B		
(69-80) C		78
(55-68) D	59	
(39-54) E		
(21-38) F		
(1-20) G		
<i>Not energy efficient - higher running costs</i>		
England & Wales	EU Directive 2002/91/EC	

Environmental Impact (CO₂) Rating

	Current	Potential
<i>Very environmentally friendly - lower CO2 emissions</i>		
(92 plus) A		
(81-91) B		
(69-80) C		
(55-68) D		
(39-54) E		
(21-38) F		
(1-20) G		
<i>Not environmentally friendly - higher CO2 emissions</i>		
England & Wales	EU Directive 2002/91/EC	