

The Barn, 27

Ashbourne Road, Blackbrook, Belper, Derbyshire, DE56

Price £785,000 Freehold



- Beautiful Detached Barn Conversion
- Highly Sought-After Location - Countryside Views
- Three/Four bedrooms
- Living Room with Feature Wood Burning Stove
- Stunning Bespoke Kitchen/Diner & Utility Room
- Impressive Garden Room
- En-suite Shower Room & Family Bathroom
- Wealth of Character and Charm
- Ecclesbourne School Catchment Area





Summary

This beautifully presented, three/four bedroom detached barn conversion enjoys a highly sought-after location in Blackbrook with countryside views, situated within the Ecclesbourne School catchment area.

Whilst the home enjoys the modern-day benefits of gas fired central heating and double glazing, it has been sympathetically converted to retain a wealth of character and charm with exposed brick walling, timber beams to ceiling and oak latched doors.

The accommodation comprises: welcoming entrance hall, guest cloakroom with WC, living room with feature wood burning stove, impressive garden room, study/bedroom four and a stunning bespoke kitchen/diner with granite worksurfaces and utility room. The first floor landing leads to a master bedroom with part-vaulted ceiling and en-suite shower room, two further bedrooms and a well appointed family bathroom.

A block paved driveway provides off-road parking with extremely well maintained landscaped gardens to the rear abutting open fields.

An internal inspection is essential to appreciate the quality on offer.

F&C

The Location

Blackbrook is a small hamlet located within easy reach of Belper which provides an excellent range of amenities including a supermarket, shops, education at all levels, railway station, public houses, restaurant and recreational facilities. The village of Duffield is some three miles to the south and the city of Derby is approximately eight miles to the south.

Accommodation

Ground Floor

Entrance Hall

The property can be entered via a solid timber door to the front elevation leading into a welcoming entrance hall with oak flooring, exposed feature brick and stone walls, two central heating radiators, staircase leading to the first floor landing with useful under-stairs storage area and timber doors leading through to:



Guest Cloakroom/WC

Fitted with a two-piece suite comprising low level WC, pedestal wash handbasin with complementary tiling to splash-back areas, tiled flooring, central heating radiator and an obscured glass double glazed window to the side elevation.

Living Room

16' x 13'3" (4.88m x 4.04m")

A well proportioned living room having the advantage of a feature fireplace incorporating a wood burning stove on a glass hearth, Oak flooring, exposed beams to ceiling with recessed ceiling spotlights, central heating radiator, two double glazed windows to the front elevation, further window to the side and glazed doors leading out onto the rear landscaped gardens.



Study/Bedroom Four

11'4" x 7'11" (3.45m" x 2.41m")

This versatile reception room can be used for either a study, formal dining space or additional bedroom with a feature exposed brick wall, timber beam to ceiling with recessed ceiling spotlights, quality Oak flooring, central heating radiator and a double glazed window to the rear elevation.



Garden Room

22'6" x 10'3" maximum (6.86m" x 3.12m" maximum)

This beautiful garden room provides a fantastic asset to the home and a versatile space suitable for both seating and dining with lovely views across the landscaped gardens, built from a timber double glazed construction with brick base and pitched tiled roof, having quality tiled flooring with underfloor heating, exposed feature brick wall, recessed ceiling spotlights and timber double glazed French doors leading out onto the garden with a glazed apex over.



Kitchen/Diner

23'8" x maximum x 14'6" maximum (7.21m" x maximum x 4.42m" maximum)

This stunning handmade bespoke fitted kitchen has a matching range of base eye-level and drawer units with polished granite worksurface over incorporating a porcelain sink unit with Swan neck mixer tap and complementary matching granite upstand, feature island unit with continued base cupboards, granite worktop and breakfast bar, appliances include a four ring induction hob with extractor fan over, integrated electric fan assisted eye-level oven with combination microwave over, integrated fridge, freezer and dishwasher, exposed beam to ceiling, central heating radiator, double glazed windows to both front and rear elevations and quality tiled flooring continuing into the dining area with a part vaulted ceiling incorporating two Velux windows, recessed ceiling spotlights, exposed brick walling, further central heating radiator, timber door to the utility room and double glazed French doors leading out onto the garden, providing an ideal space for outdoor dining.



Kitchen/Diner



Utility Room

11'9" x 4'11" (3.58m" x 1.50m")

Fitted with a range of base units with quality granite worksurface over incorporating a stainless steel sink unit with single draining board and taps over, complementary tiled splash-back, plumbing for automatic washing machine, space for tumble dryer, recessed ceiling spotlights, central heating radiator, quality tiled flooring and double glazed window to the front elevation.

First Floor

Landing

On the first floor landing is a continuation of the Oak flooring, airing cupboard providing useful storage space, access to loft and Oak latched doors leading through to:

Master Bedroom

15'11" maximum x 13'4" maximum (4.85m" maximum x 4.06m" maximum)

A well proportioned master bedroom having a feature part-vaulted ceiling with exposed timber beams, Oak flooring, central heating radiator, recessed ceiling spotlights, double glazed window to front, skylight window to rear and Oak latched door to:



En-Suite Shower Room

5'6" x 5'2" (1.69 x 1.60)

Comprising of a single shower enclosure with electric shower, pedestal wash handbasin, low level WC, central heating radiator, tiled walls, tiled flooring, extractor fan and period exposed beams.

Bedroom Two

14'5" x 10'11" (4.40 x 3.34)

Again, a generous sized room with part vaulted ceiling and exposed timber beams, central heating radiator, recessed ceiling spotlights, feature arched window to the side, further window to the front elevation and Oak latched door.



Bedroom Three

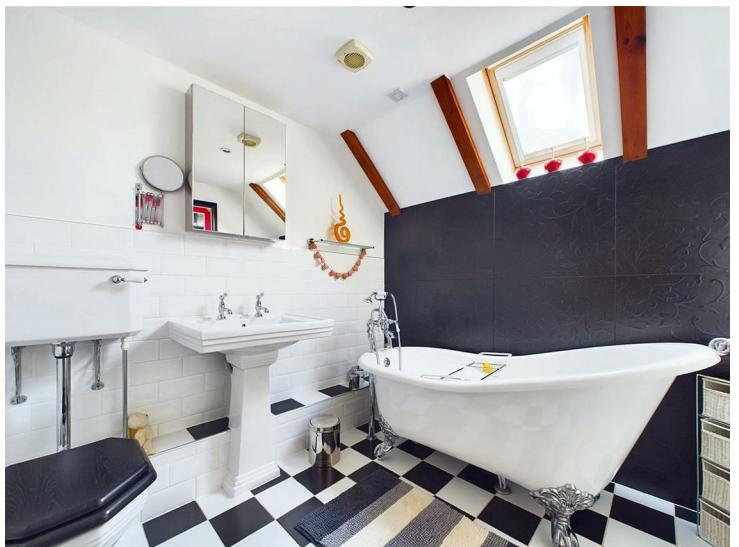
10'1" x 7'8" (3.08 x 2.34)

Having fitted wardrobes with display shelving, character ceiling with exposed timber beams, central heating radiator, recessed ceiling spotlights and a Velux style window.

Period Style Bathroom

7'7" x 6'11" (2.33 x 2.11)

A period style bathroom with a white suite comprising freestanding roll top bath with claw feet and hand shower attachment, pedestal wash handbasin with hot and cold taps, low flush WC, mirrored medicine cabinet, Heritage style radiator, part tiled walls, attractive floor tiling, inset ceiling spotlighting, extractor fan to ceiling, exposed timber beams, Velux style window and Oak latched door.



Gardens

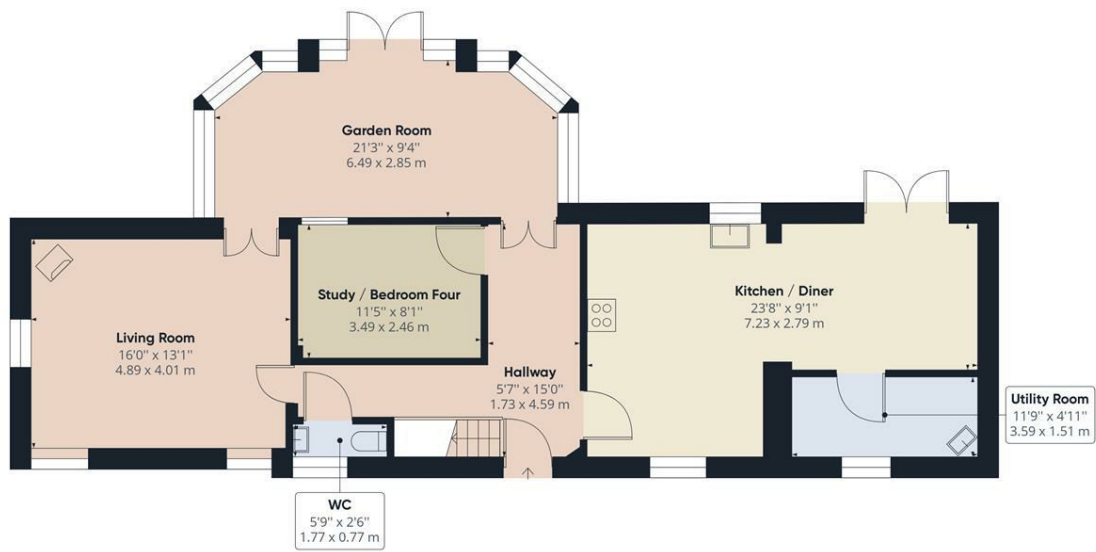
A major asset to this property is its beautiful, well maintained landscaped gardens enjoying abutting open fields offering fine countryside views, featuring extensive laid lawn with planted shrubs, bushes, trees and paved patio area providing a ideal sitting out and entertaining space, enjoying the idyllic pond.



Driveway

A block paved driveway provides off road parking and leads to the front entrance door with wrought iron gated access to the side of the property to the rear garden.

Council Tax Band E - Amber Valley



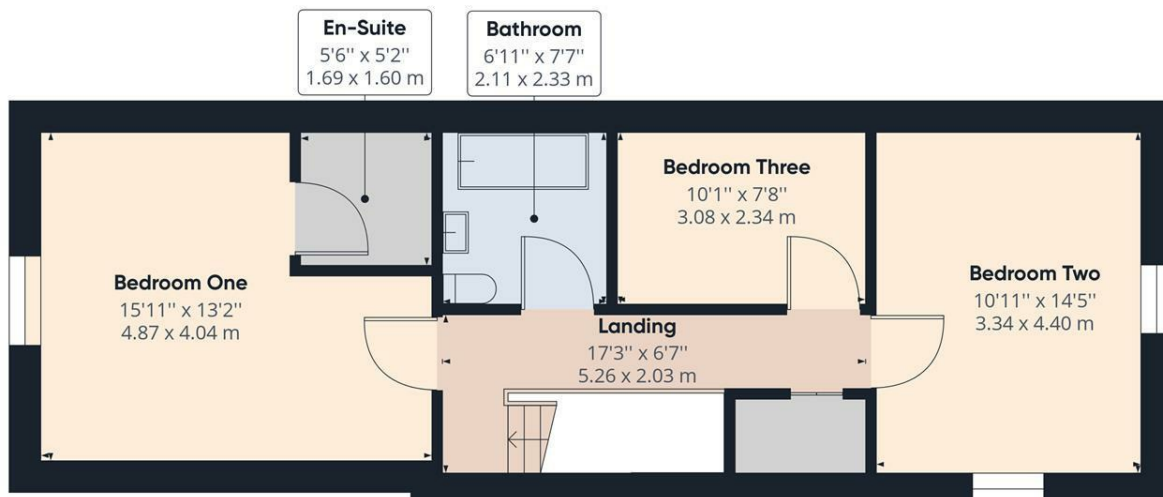
Approximate total area⁽¹⁾
1000.13 ft²
92.92 m²

(1) Excluding balconies and terraces

While every attempt has been made to ensure accuracy, all measurements are approximate, not to scale. This floor plan is for illustrative purposes only.

GIRAFFE360

Floor 0



Approximate total area⁽¹⁾
589.35 ft²
54.75 m²

(1) Excluding balconies and terraces

While every attempt has been made to ensure accuracy, all measurements are approximate, not to scale. This floor plan is for illustrative purposes only.

GIRAFFE360

Floor 1



Duffield Office

Duffield House
Town Street
Duffield
Derbyshire
DE56 4GD

01332 843390
duffield@fletcherandcompany.co.uk

Derby Office

15 Melbourne Court
Millennium Way
Pride Park
Derby
DE24 8LZ

01332 300558
derby@fletcherandcompany.co.uk

Getting there

The Barn, 27 Ashbourne Road
Blackbrook
Belper
Derbyshire
DE56 2LD

Council Tax Band: E
Tenure: Freehold



Energy Efficiency Rating

	Current	Potential
Very energy efficient - lower running costs		
(92 plus) A		
(81-91) B		84
(69-80) C		
(55-68) D	57	
(39-54) E		
(21-38) F		
(1-20) G		
Not energy efficient - higher running costs		
England & Wales	EU Directive 2002/91/EC	