



{ THE SQUARE LIPHOOK GU30
£1,850 PER MONTH AVAILABLE 01/07/2025

Hamptons
THE HOME EXPERTS

{ THE PARTICULARS

The Square Liphook GU30

£1,850 Per Month
Unfurnished

 3 Bedrooms
 2 Bathrooms
 2 Receptions

Features

- Three Bedrooms, - Two Reception Rooms,
- Off-Street Parking, - Study, - Utility Room,
- Period Features, - Village Location, - Council Tax Band E

Council Tax Band E

Hamptons
4 Castle Street
Farnham, GU9 7HS
01252 902000
farnhamlettings@hamptons.co.uk
www.hamptons.co.uk

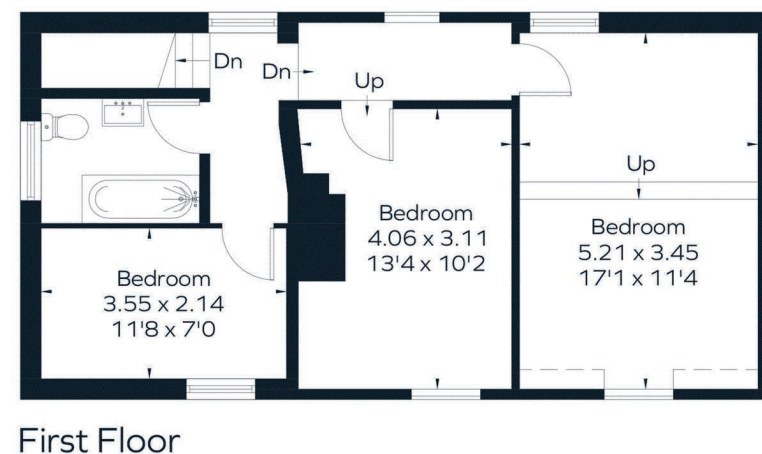
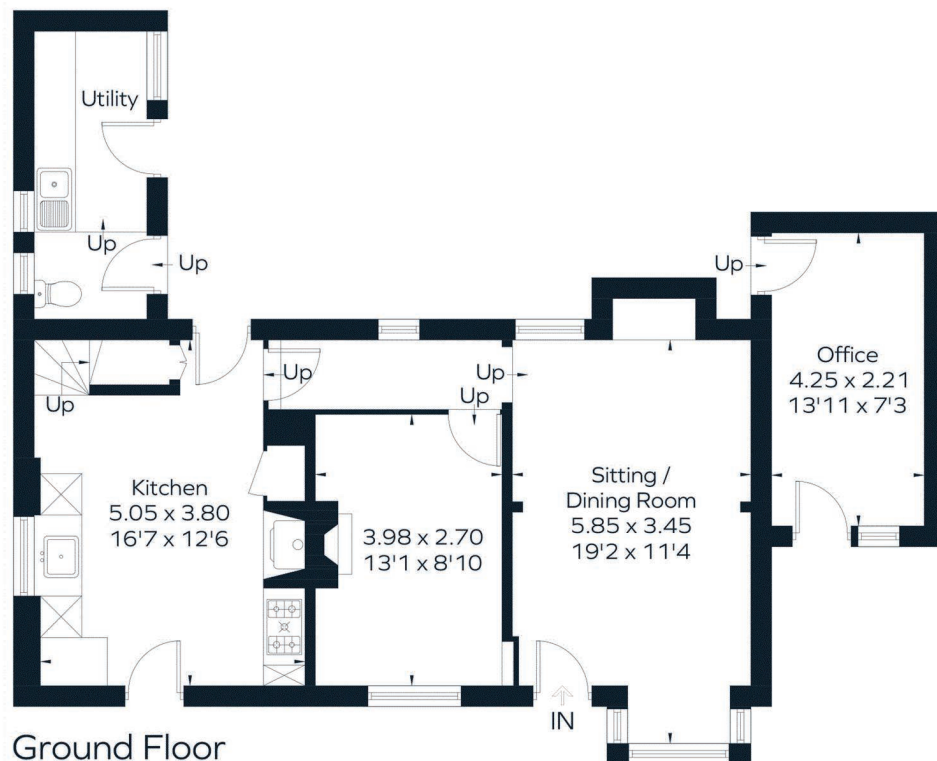
{ A PERIOD THREE BEDROOM COTTAGE SET IN THE HEART OF LIPHOOK

The Property

Nestled within the quaint and picturesque landscape of Liphook, this enchanting three bedroom period cottage exudes timeless charm and character. With its central village location and distinctive features, this property offers a cosy retreat amidst the serene beauty of village life. Upstairs, three cosy double bedrooms are thoughtfully designed and are accompanied by a family bathroom. Downstairs offers an abundance of period features with low-beam ceilings, open-fireplaces and cottage style windows. The kitchen is equipped with modern appliances and is really the heart of the home. The cottage also benefits from a separate utility room and office which is great for working at home. A private rear garden and off-street parking for 2 cars is also provided.



Approximate Floor Area = 106.9 sq m / 1151 sq ft
Office / Utility = 16.5 sq m / 178 sq ft
Total = 123.4 sq m / 1329 sq ft



This floor plan has been drawn in accordance with RICS Property Measurement 2nd edition.

All measurements, including the floor area, are approximate and for illustrative purposes only. @fourwalls-group.com #63362

For Clarification

We wish to inform prospective tenants that we have prepared these particulars as a general guide and they have been confirmed as accurate by the landlord. We have not verified permissions, nor carried out a survey, tested the services, appliances and specific fittings. Room sizes are approximate and measurement figures rounded: they are taken between internal wall surfaces and therefore include cupboards/shelves, etc. Accordingly, they should not be relied upon for

carpets and furnishings. It should also be noted that all fixtures and fittings, carpeted, curtains/blinds, kitchen equipment and garden statuary, whether fitted or not, are deemed removable by the landlord unless specifically itemised with these particulars. Please enquire in office or on our website for details on holding deposit and tenancy deposit figures.

