



WEST STREET FARNHAM GU9
£1,950 PER MONTH AVAILABLE 04/04/2025

Hamptons
THE HOME EXPERTS

{ THE PARTICULARS

West Street Farnham GU9

£1,950 Per Month
Unfurnished

 2 Bedrooms
 1 Bathroom
 1 Reception

Features

- Two Bedrooms, - Newly Converted, -
Central Location, - Character Features, -
Large Reception Room, - Council Tax
Band: TBC

Council Tax

Council tax band not specified

Hamptons
4 Castle Street
Farnham, GU9 7HS
01252 902000
farnhamlettings@hamptons.co.uk
www.hamptons.co.uk

{ A NEWLY CONVERTED TWO BEDROOM APARTMENT IN CENTRAL FARNHAM

The Property

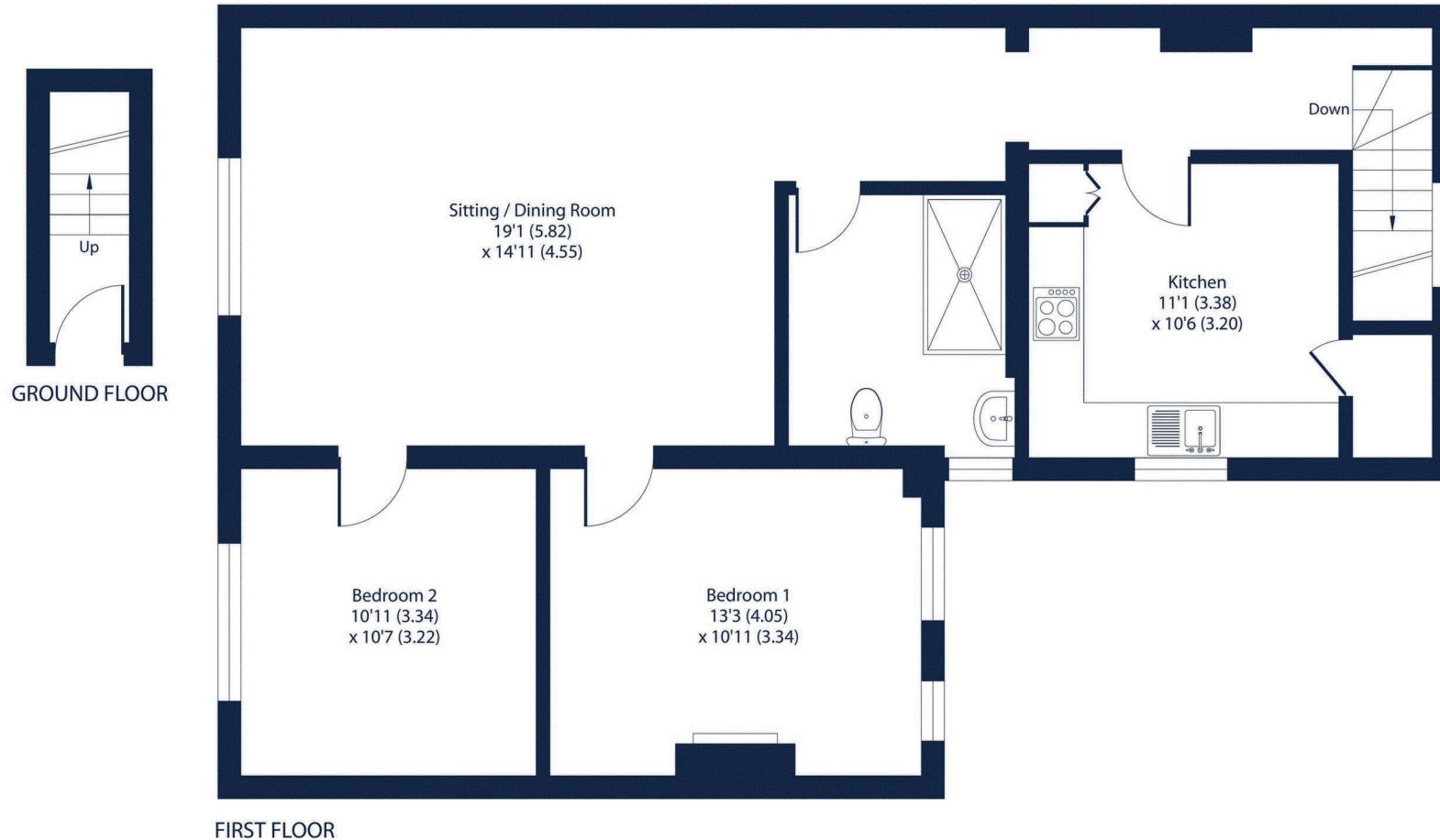
This charming two-bedroom apartment is situated in the heart of Farnham, offering a perfect blend of convenience and comfort. The property features a spacious and light-filled living area, ideal for both relaxing and entertaining. The modern kitchen is fully equipped with all the essential appliances, providing a practical space for cooking. The property benefits from two double bedrooms and a good sized bathroom comes with state of the art appliances and power shower. The whole property has recently undergone a full renovation and is brand new throughout. *Please note that the council tax banding for this newly converted apartment is currently awaiting confirmation. Once the banding is determined by the local council, we will provide you with the relevant information regarding council tax rates and payments. Thank you for your patience and understanding. If you have any further questions or concerns, please feel free to contact us.*



West Street, Farnham, GU9

Approximate Area = 956 sq ft / 88.8 sq m

For identification only - Not to scale



Floor plan produced in accordance with RICS Property Measurement 2nd Edition, Incorporating International Property Measurement Standards (IPMS2 Residential). © n°checom 2025. Produced for Hamptons. REF: 1270114

For Clarification

We wish to inform prospective tenants that we have prepared these particulars as a general guide and they have been confirmed as accurate by the landlord. We have not verified permissions, nor carried out a survey, tested the services, appliances and specific fittings. Room sizes are approximate and measurement figures rounded: they are taken between internal wall surfaces and therefore include cupboards/shelves, etc. Accordingly, they should not be relied upon for

carpets and furnishings. It should also be noted that all fixtures and fittings, carpeted, curtains/blinds, kitchen equipment and garden statuary, whether fitted or not, are deemed removable by the landlord unless specifically itemised with these particulars. Please enquire in office or on our website for details on holding deposit and tenancy deposit figures.

