



GOSPORT ROAD LOWER FARRINGDON GU34
£2,950 PER MONTH AVAILABLE 29/07/2024


Hamptons

THE HOME EXPERTS

{ THE PARTICULARS

Gosport Road Lower Farringdon
GU34

£2,950 Per Month
Unfurnished

 4 Bedrooms
 2 Bathrooms
 2 Receptions

Features

- Four Bedrooms, - Two Reception Rooms,
- Downstairs shower room, - Garden, -
Countryside Views, - Council Tax Band F, -
Parking

Council Tax

Council Tax Band F

Hamptons

4 Castle Street
Farnham, GU9 7HS
01252 902000
farnhamlettings@hamptons.co.uk
www.hamptons.co.uk

{ A FOUR BEDROOM FARMHOUSE IN A COUNTRYSIDE SETTING

The Property

Nestled in the picturesque countryside village of Lower Farringdon, Alton, this enchanting 4-bedroom farmhouse offers a perfect blend of rustic charm and modern comforts. Ideal for families seeking a serene and spacious living environment, this property promises a tranquil retreat from the hustle and bustle of city life. Offering four bedrooms split over two floors, this farmhouse is not to be missed. The ground floor has a large sitting room with open fireplace and views onto neighbouring countryside. A modern kitchen is equipped with modern appliances. Upstairs, three further bedrooms are located with family bathroom and ensuite. Offered unfurnished.

Location

Situated in the charming village of Lower Farringdon, the farmhouse is just a short drive from the amenities of Alton. Enjoy the best of both worlds with easy access to local shops, schools, and transport links, while being enveloped by the tranquil beauty of the Hampshire countryside.



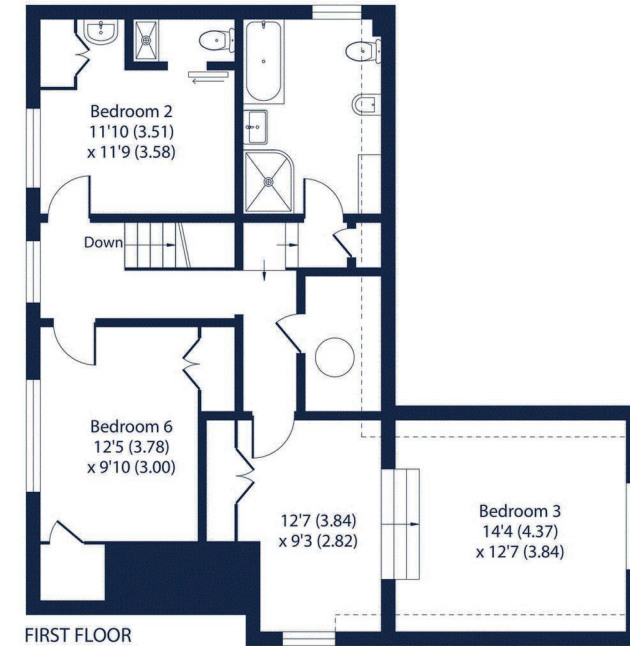
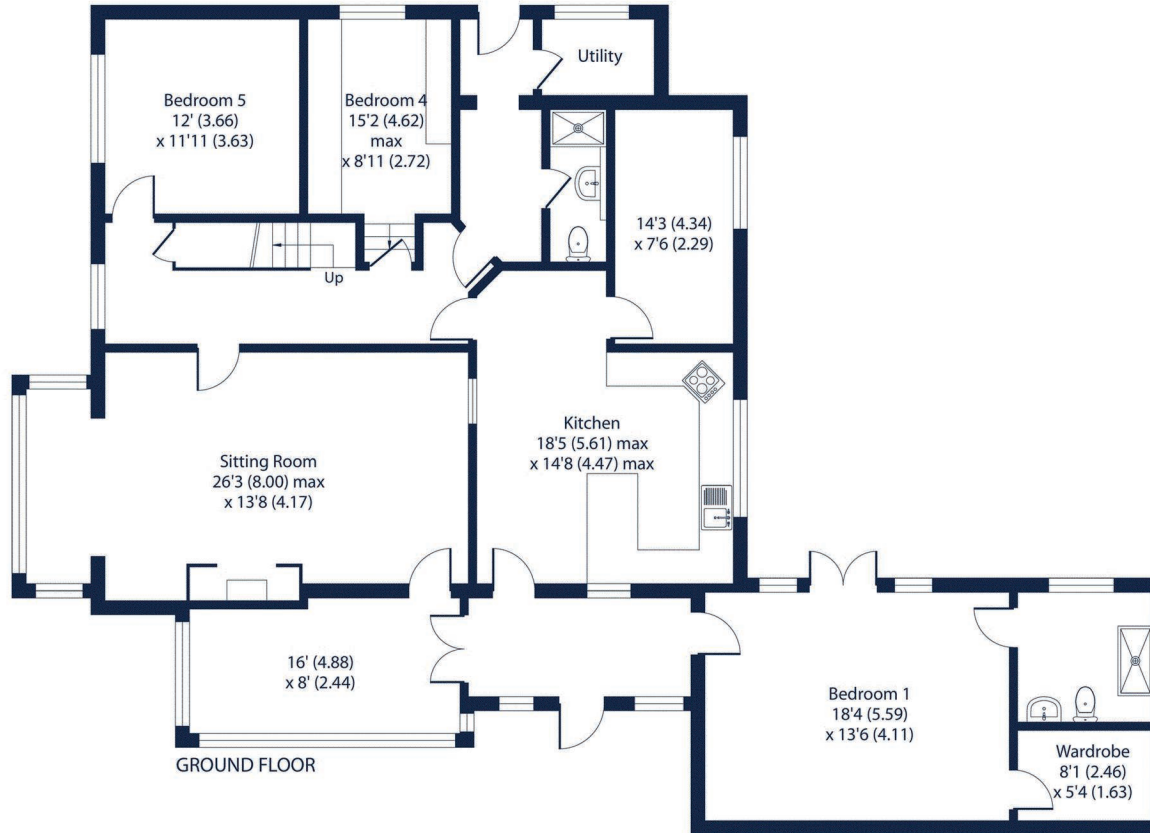
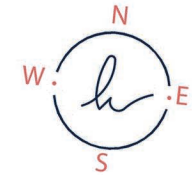
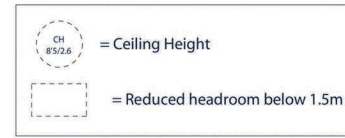
Gosport Road, Lower Farringdon, Alton, GU34

Approximate Area = 2695 sq ft / 250.3 sq m

Limited Use Area(s) = 61 sq ft / 5.6 sq m

Total = 2756 sq ft / 255.9 sq m

For identification only - Not to scale



Floor plan produced in accordance with RICS Property Measurement Standards incorporating International Property Measurement Standards (IPMS2 Residential). © n|che.com 2024. Produced for Hamptons. REF: 1150004

For Clarification

We wish to inform prospective tenants that we have prepared these particulars as a general guide and they have been confirmed as accurate by the landlord. We have not verified permissions, nor carried out a survey, tested the services, appliances and specific fittings. Room sizes are approximate and measurement figures rounded: they are taken between internal wall surfaces and therefore include cupboards/shelves, etc. Accordingly, they should not be relied upon for

carpets and furnishings. It should also be noted that all fixtures and fittings, carpeted, curtains/blinds, kitchen equipment and garden statuary, whether fitted or not, are deemed removable by the landlord unless specifically itemised with these particulars. Please enquire in office or on our website for details on holding deposit and tenancy deposit figures.

Energy Efficiency Rating		Current	Potential
Band A	92-100		
Band B	81-91		
Band C	69-80		
Band D	55-68		
Band E	39-54	41	
Band F	21-38		
Band G	1-20		61

EU Directive 2002/91/EC
 England & Wales

