



**Maria Theresa Close, KT3 5EF**

**Asking Price £795,000**



## Maria Theresa Close, KT3 5EF

An impressive four bedroom double fronted detached Georgian style family home in a quiet cul-de-sac location only minutes from New Malden town centre. Originally built in the early 1970s the house is offers excellent scope for updating and refurbishment to suit a buyer's taste and requirements.



- No Chain
- Excellent Transport Links Close By
- Cloakroom
- Quiet Cul-De-Sac
- 4 Bedrooms
- Gas Central Heating and Double Glazing
- Garage plus Drive Way Parking
- Catchment area to high performing schools

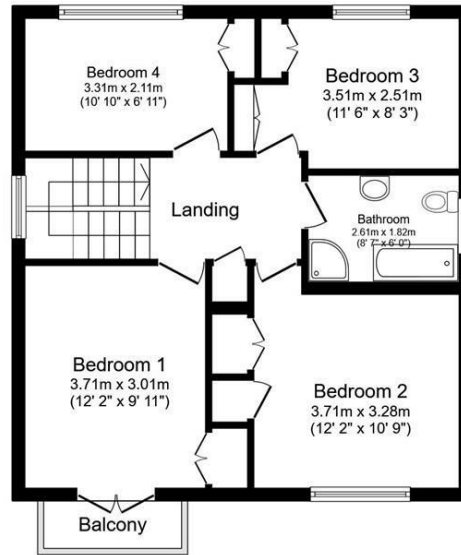
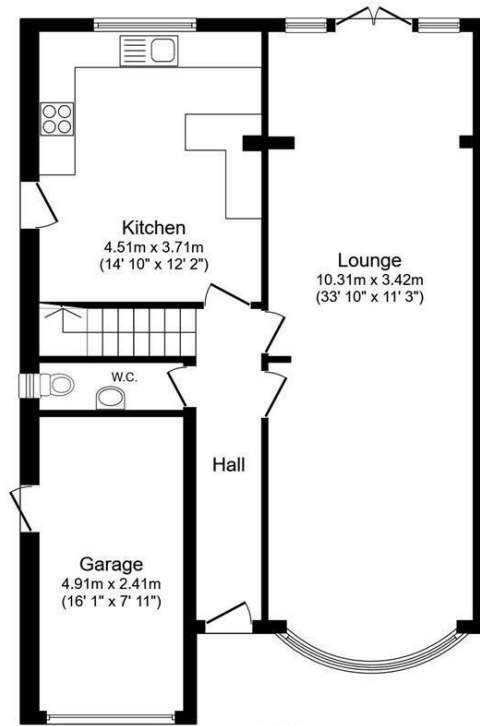
The property is in an extremely popular tree-lined residential road within easy reach of New Malden town centre and its many amenities.

EPC Rating : D

Council Tax Band : G ( Royal Borough of Kingston Upon Thames)



**Maria Theresa Close, New Malden, KT3 5EF**



**TOTAL: 134.7 sq.m. (1,449 sq.ft.)**

This floor plan is for illustrative purposes only. It is not drawn to scale. Any measurements, floor areas (including any total floor area), openings and orientations are approximate. No details are guaranteed, they cannot be relied upon for any purpose and do not form any part of any agreement. No liability is taken for any error, omission or misstatement. A party must rely upon its own inspection(s). Powered by www.Propertybox.io

**Parry & Drewett Estate Agents** 21 High Street, New Malden, Surrey, KT3 4BY

**Tel:** 02089490955

**Email:** [newmalden@parryanddrewett.com](mailto:newmalden@parryanddrewett.com)

**Web:** [www.parryanddrewett.com](http://www.parryanddrewett.com)