



2 Bedroom End Terraced House located in Tiptree.

Find us on..



JOHN ALEXANDER
ESTATE AGENTS

Heaton Way Tiptree Colchester CO5 0DZ



2



1



1



B



C



614
sq ft

FULL DESCRIPTION

OVERVIEW

John Alexander is delighted to offer for sale this exceptionally well-presented two-bedroom end-of-terrace home, finished to a high standard throughout. Tucked away in a peaceful cul-de-sac, the property enjoys a convenient location within close walking distance of a range of local shops, schools, and everyday amenities. This attractive home combines comfort and practicality, making it ideal for first-time buyers, or investors and is offered to the market with no onward chain.

ENTRANCE HALL

Under stairs cupboard, radiator, double glazed window to front, stairs to first floor, door leading to;

KITCHEN

Matching base and eye level Hi gloss style soft closing units, fitted counter tops, composite sink top and mixer tap, touch operated electric hob, canopy style extractor hood, electric oven. Built in fridge/freezer and dishwasher, space for washing machine, over counter lighting, double glazed window to front.

LOUNGE/DINER

17' 2" x 10' 7" (5.23m x 3.23m)

Two radiators, double glazed window to rear, French doors leading out to rear garden.

LANDING

Loft access, doors to;

BEDROOM ONE

17' x 8' 9" (5.18m x 2.67m)

Large built in wardrobes, radiator, two double glazed windows to rear.

BEDROOM TWO

8' 8" x 7' 1" (2.64m x 2.16m)

Radiator, double glazed window to front.

BATHROOM

Panel bath with shower mixer valve and rainfall style shower hose, low level WC, hand wash basin, heated towel rail, fully tiled walls, extractor fan, double glazed window to front.

GARDEN

The front garden is mainly stone covered with path to entrance door retained by picket style fencing. Canopy style storm porch, power supply, water tap.

Rear garden has a patio area with the rest being laid to lawn. There is a shed with power supply to remain, and a gate allowing access to allocated parking space at the back of the property.

Asking Price Of
£290,000



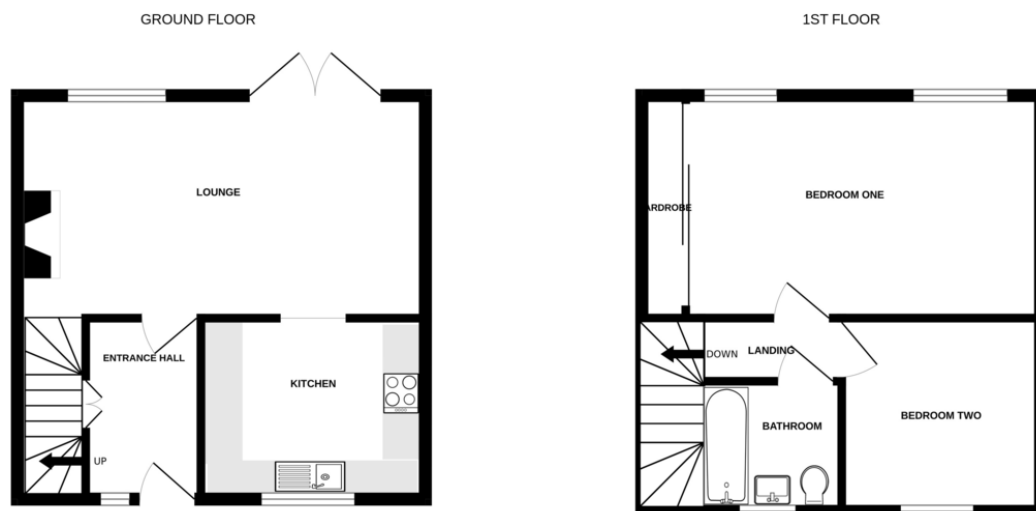




Heaton Way, Tiptree CO5 0DZ



FLOORPLAN



Whilst every attempt has been made to ensure the accuracy of the floorplan contained here, measurements of doors, windows, rooms and any other items are approximate and no responsibility is taken for any error, omission or mis-statement. This plan is for illustrative purposes only and should be used as such by any prospective purchaser. The services, systems and appliances shown have not been tested and no guarantee as to their operability or efficiency can be given.
Made with Metropix ©2025

CONTACT
1 Church Road
Tiptree
Colchester
Essex
CO5 0LG

E info@john-alexander.co.uk

T 01621 814334 www.john-alexander.co.uk

Find us on..



JOHN ALEXANDER
ESTATE AGENTS