

## 3 Bedroom Semi-Detached House located in Tiptree.

Find us on..



**JOHN ALEXANDER**  
ESTATE AGENTS

# Hutchinson Close Tiptree Colchester CO5 0HE



3



1



3

Guide Price **£300,000**  
to **£325,000**

## FULL DESCRIPTION

### OVERVIEW

John Alexander are delighted to offer this beautifully presented three-bedroom link-detached home offers the perfect blend of modern comfort and village charm. Overlooking a picturesque greensward and just moments from Tiptree's shops, cafés, and highly regarded schools, it's ideally positioned for both convenience and community.

### PROPERTY INFORMATION:

**ENTRANCE HALL:** Entrance door, laminate flooring, stairs to first floor, under stairs cupboard

**CLOAKROOM:** Obscure window to front, WC, wash hand basin, radiator.

**KITCHEN 9' x 7' 9" :** Window to front, work top with drawers and cupboards beneath, Eye level units, built in sink, Stainless steel built in oven, hob and extractor fan, space for fridge/freezer, washing machine , opening between kitchen and lounge/diner, wall mounted gas boiler.

**LOUNGE/DINER 15' 9" x 17' :** French double doors to rear, radiator, TV point.

### LANDING

**BEDROOM ONE 13' 8" x 10' 4" :** Two windows to rear, fitted double wardrobes, radiator.

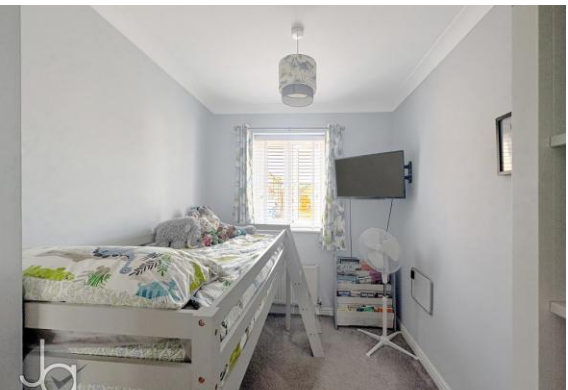
**BEDROOM TWO 10 ' 8" x 7' 1" :** Window to front, airing cupboard, loft access, radiator.

**BEDROOM THREE 8' 3" x 8' 2" :** Window to front. radiator.

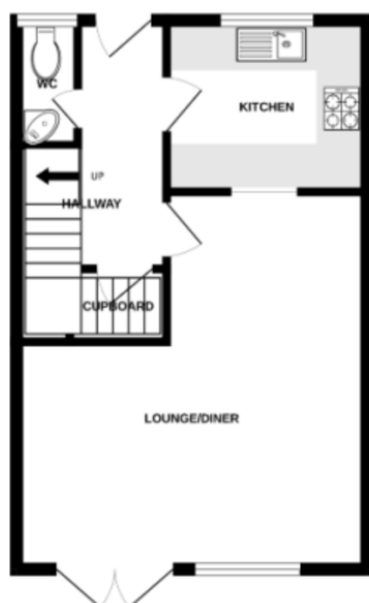
**BATHROOM:** bath with over-head shower, wash hand basin, fully tiled walls and floor, extractor fan, ceiling spot lights, heated towel rail.

**REAR GARDEN :** The rear garden enjoys a sunny southerly aspect and complete privacy. It features artificial lawn and a decked area directly accessed from the house, perfect for relaxing or entertaining. A rear gate leads conveniently to the two allocated parking spaces. There is a further parking space on in front of the property.





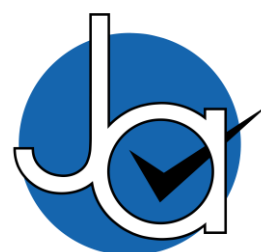
## FLOORPLAN



## DIRECTIONS

CONTACT  
**1 Church Road**  
**Tiptree**  
**Colchester**  
**Essex**  
**CO5 0LG**  
E [info@john-alexander.co.uk](mailto:info@john-alexander.co.uk)  
T 01621 814334 [www.john-alexander.co.uk](http://www.john-alexander.co.uk)

Find us on..



**JOHN ALEXANDER**  
ESTATE AGENTS