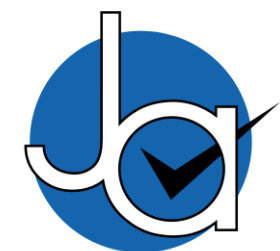
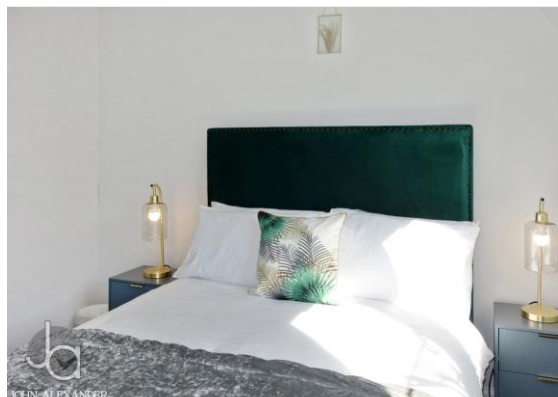




## 3 bedroom Maisonette located in Springfield.

£1450pcm

Find us on..



**JOHN ALEXANDER**  
ESTATE AGENTS

# Samuel Manor Springfield Chelmsford CM2 6PU



3



1



0



EPC



TBC

## FULL DESCRIPTION

### OVERVIEW

John Alexander are delighted to offer this spacious modern first floor maisonette, located within the Chelmer Village development. Samuel Manor forms part of the modern residential Chelmer Village development, which has its own Shopping Centre, which includes the Asda superstore, there is also a school and recreational areas within the development. Regular bus services provide public transport into Chelmsford City Centre which offers a comprehensive range of amenities together with main line station facilities to London Liverpool Street! Available now!!

### HALL

### LOUNGE/DINER

### KITCHEN

### BEDROOM ONE

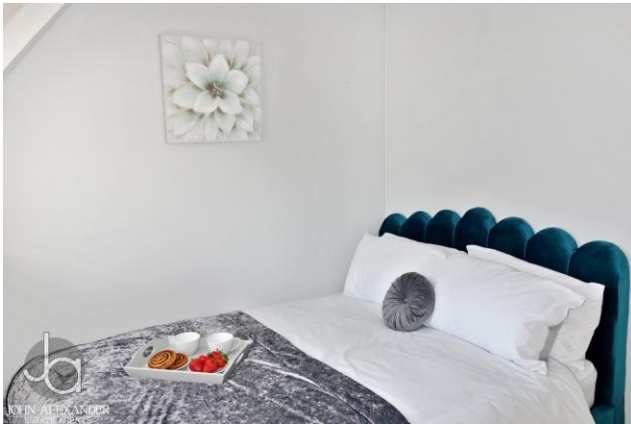
### BEDROOM TWO

### BEDROOM THREE

### FAMILY BATHROOM

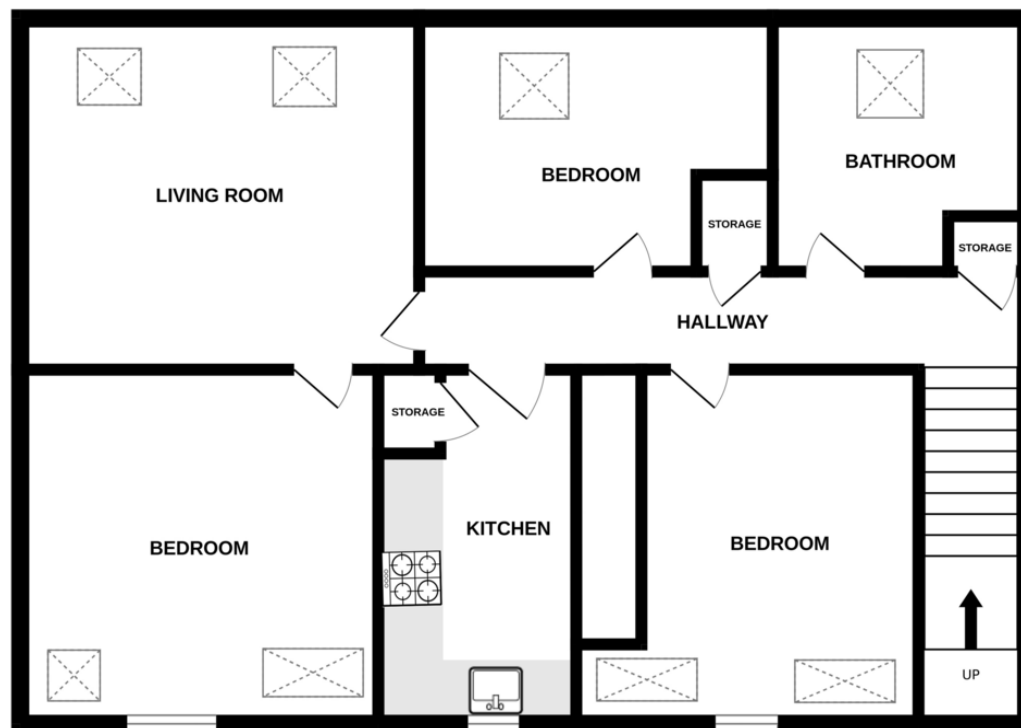
### OUTSIDE

There is allocated parking available for the property.



## FLOORPLAN

### GROUND FLOOR



Whilst every attempt has been made to ensure the accuracy of the floorplan contained here, measurements of doors, windows, rooms and any other items are approximate and no responsibility is taken for any error, omission or mis-statement. This plan is for illustrative purposes only and should be used as such by any prospective purchaser. The services, systems and appliances shown have not been tested and no guarantee as to their operability or efficiency can be given.  
Made with Metropix ©2025

## DIRECTIONS

### CONTACT

**1 Church Road  
Tiptree  
Colchester  
Essex  
CO5 0LG**

E  
T

[www.john-alexander.co.uk](http://www.john-alexander.co.uk)

Find us on..



**JOHN ALEXANDER**  
ESTATE AGENTS