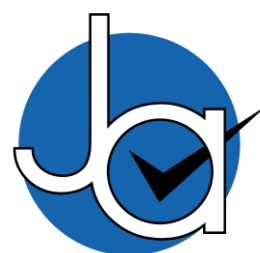




3 Bedroom Semi-Detached House located in Tiptree.

Find us on..



JOHN ALEXANDER
ESTATE AGENTS

Hutchinson Close Tiptree Colchester CO5 0HE



3



2



2

Guide Price
£325,000 to
£350,000

FULL DESCRIPTION

OVERVIEW

We are pleased to present this spacious three double bedroom semi detached house located in a cul- de -sac close to the village centre. Benefiting from a large lounge/diner, cloakroom, kitchen and conservatory, the currently owners have tastefully decorated the property and maintained to high standard.

ENTRANCE HALL

Entrance door, laminate flooring, radiator, and stairs to the first floor.

KITCHEN

12' 3" x 8' 6" (3.73m x 2.59m)

Double-glazed window to front, worktop with drawers and cupboards beneath, eye-level units, space for cooker, and extractor fan, space for washing machine and fridge freezer, radiator, and ceiling spotlights.

LOUNGE/DINER

15' 6" x 12' 9" (4.72m x 3.89m)

Double-glazed French doors to the conservatory, laminate flooring, and radiator, space under stairs

CONSERVATORY

UPVC construction and laminate flooring.

LANDING

BEDROOM ONE

13' 1" x 12' 2" (3.99m x 3.71m)

Double-glazed window to front, two built-in wardrobes, airing cupboard, and radiator.

ENSUITE

Obscure double-glazed window to front, shower cubicle, toilet, wash hand basin, part tiled walls, and radiator.

BEDROOM TWO

15' 11" x 8' 5" (4.85m x 2.57m)

Double-glazed window to front and rear, built-in wardrobe, loft access, and radiator.

BEDROOM THREE

10' 2" x 8' 6" (3.1m x 2.59m)

Double-glazed window to rear and radiator.

FAMILY BATHROOM

Obscure double-glazed window to rear, bath, toilet, wash hand basin, and radiator.

REAR GARDEN

Path to the rear of the garden, patio area, lawn, flower, and shrub beds, a gate to driveway, shed to remain.

CARPORT

Parking for 2/3 cars.



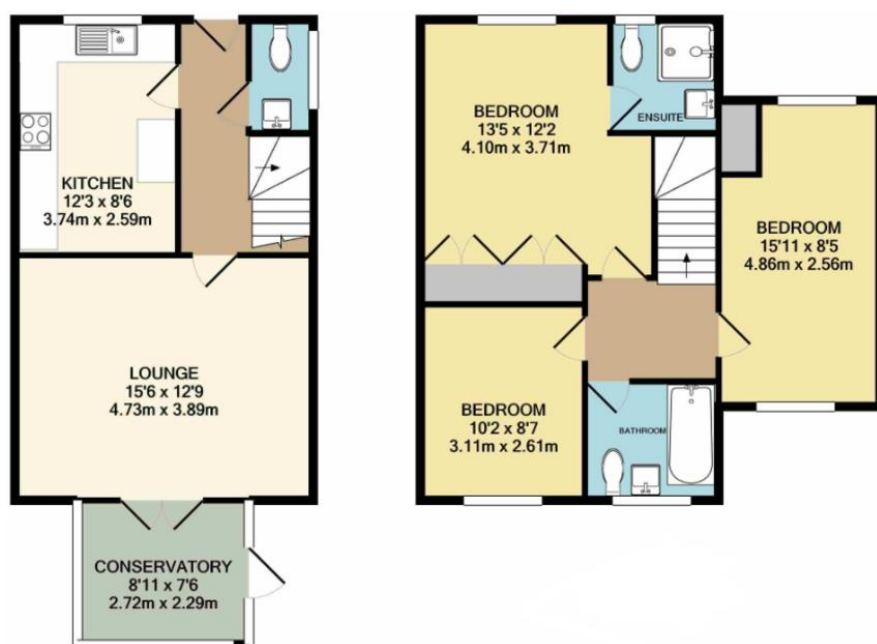




Hutchinson Close, Tiptree CO5 0HE



FLOORPLAN



CONTACT
1 Church Road
Tiptree
Colchester
Essex
CO5 0LG
E info@john-alexander.co.uk

T 01621 814334 www.john-alexander.co.uk

Find us on..



JOHN ALEXANDER
ESTATE AGENTS