

4 Bedroom Detached House located in Tiptree.

Find us on..



JOHN ALEXANDER
ESTATE AGENTS

5 Salis Close Tiptree Colchester CO5 0FP



4



4



0



TBC

Asking Price Of £850,000

We are delighted to offer this property which is situated in a secluded cul-de-sac, this spacious four-bedroom detached home is one of the largest among the ten properties in the development. Spread over two floors, it provides ideal family living space. Built by the renowned developer Vaughan & Blyth, the property features numerous additional upgrades throughout.

FULL DESCRIPTION

OVERVIEW

We are delighted to offer this property which is situated in a secluded cul-de-sac, this spacious four-bedroom detached home is one of the largest among the ten properties in the development. Spread over two floors, it provides ideal family living space. Built by the renowned developer Vaughan & Blyth, the property features numerous additional upgrades throughout.

HALLWAY

CLOAKROOM

Wash hand basin, low level W.C, radiator.

DINING ROOM

12' 9" x 11' 11" (3.89m x 3.63m)

Double glazed window to front, radiator.

LOUNGE

19' 5" x 18' 5" (5.92m x 5.61m)

Double glazed windows and French doors to the rear aspect, three velux windows on the vaulted ceiling and a Termatech wood burning stove with granite surround.

KITCHEN/BREAKFAST ROOM

19' 7" x 14' 3" (5.97m x 4.34m)

Double glazed window and door to the rear leading to the garden, one and a half bowl sink inset to a stunning (river white) granite worktop, range of wall and base units incorporating cupboards and drawers, breakfast bar with granite worktop, six ring gas hob, integrated dishwasher, built in microwave, double oven and plate warming drawer.

STUDY/PLAYROOM

13' 5" x 9' 11" (4.09m x 3.02m)

Double glazed window, radiator.

LANDING

BEDROOM ONE

14' 6" x 13' 7" (4.42m x 4.14m)

Double glazed window to front, double door wardrobes, radiator.

ENSUITE

Double glazed obscured window, heated towel rail, wash hand basin and low level w.c, shower cubical with mixer.

BEDROOM TWO

16' 6" x 10' 4" (5.03m x 3.15m)

ENSUITE

7' 11" x 6' 9" (2.41m x 2.06m)

Double glazed obscured window, heated towel rail, wash hand basin and low level w.c, shower cubical with mixer.

BEDROOM THREE

12' 9" x 11' 10" (3.89m x 3.61m)

Double glazed window, built in wardrobe, radiator.




JOHN ALEXANDER
ESTATE AGENTS




JOHN ALEXANDER
ESTATE AGENTS

BEDROOM FOUR

14' 4" x 8' 10" (4.37m x 2.69m)

Double glazed window, built in wardrobe , radiator.

FAMILY BATHROOM

9' x 7' 4" (2.74m x 2.24m)

Double glazed obscured window, low level w.c, wash hand basin, heated towel rail, bath, shower cubicle.




JOHN ALEXANDER
ESTATE AGENTS

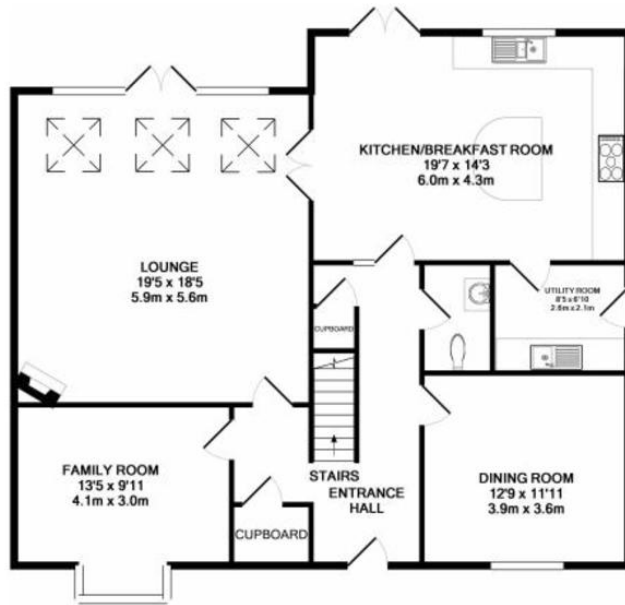




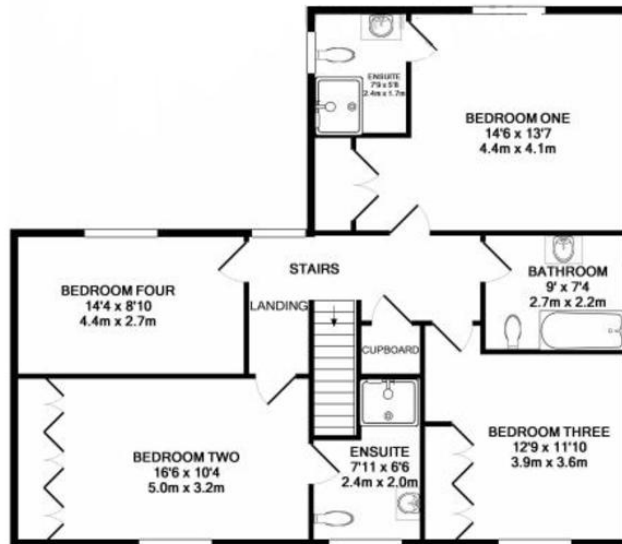
5 Salis Close, Tiptree CO5 0FP



FLOORPLAN



GROUND FLOOR



DIRECTIONS

CONTACT
1 Church Road
Tiptree
Colchester
Essex
CO5 0LG

E info@john-alexander.co.uk

T 01621 814334 www.john-alexander.co.uk

Find us on..



JOHN ALEXANDER
ESTATE AGENTS