



## 5 bedroom Semi-Detached House located in Colchester.

Guide Price  
£350,000 - £375,000

Find us on..



**JOHN ALEXANDER**  
ESTATE AGENTS



# 7 Silverthorne Close Colchester CO2 8QB



5



2



C



EPC

D

## FULL DESCRIPTION

### THE HOME

\*\*\* GUIDE PRICE OF £350,000 - £375,000 \*\*\*

John Alexander is delighted to present this spacious four to five-bedroom semi-detached property for sale, which is well presented throughout. This home provides ample space, making it ideal for a growing family, and is situated on a quiet cul-de-sac, ensuring a peaceful environment. Located just off Mersea Road, residents will enjoy convenient access to nearby schools, shops, and various amenities.

This family home offers an abundance of space with well-proportioned interiors. The ground floor features an inviting entrance hallway, a convenient cloakroom, a utility room, and a versatile study or fifth bedroom. The generous lounge and kitchen complete the ground floor layout, while the first floor boasts four spacious double bedrooms and a family bathroom.

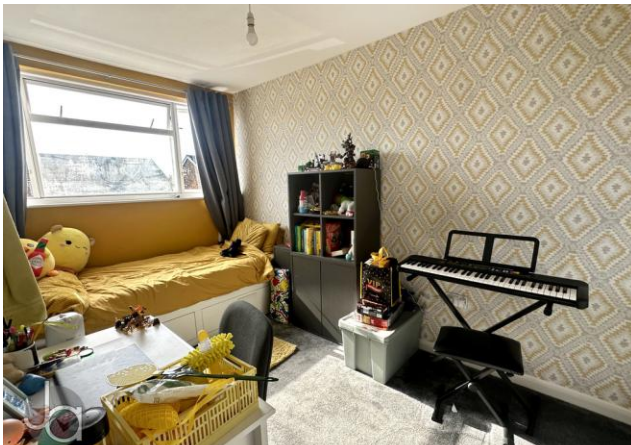
Additional benefits of this property include off-road parking at the front and a beautifully maintained private garden at the rear, perfect for enjoying outdoor activities. John Alexander, your exclusive agents, highly recommend scheduling an early internal viewing to fully appreciate all that this wonderful home has to offer and to avoid missing out.

### THE LOCATION

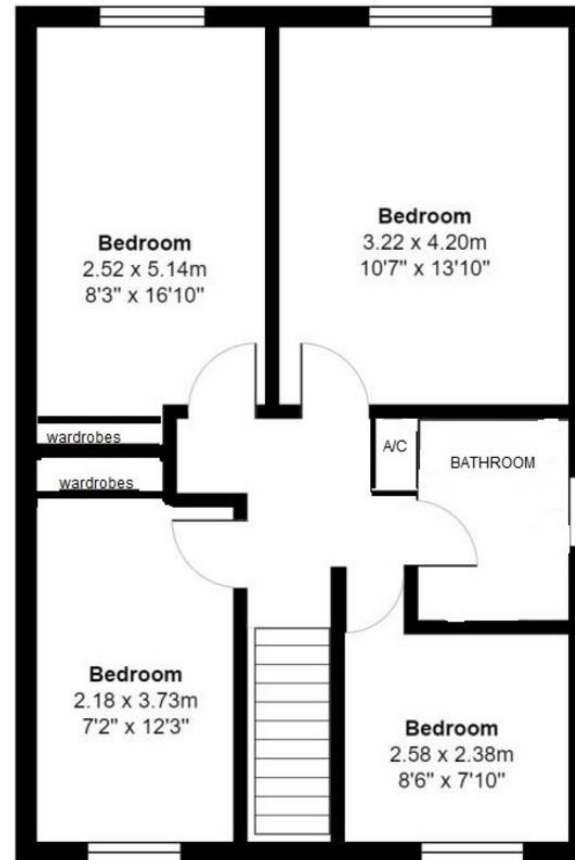
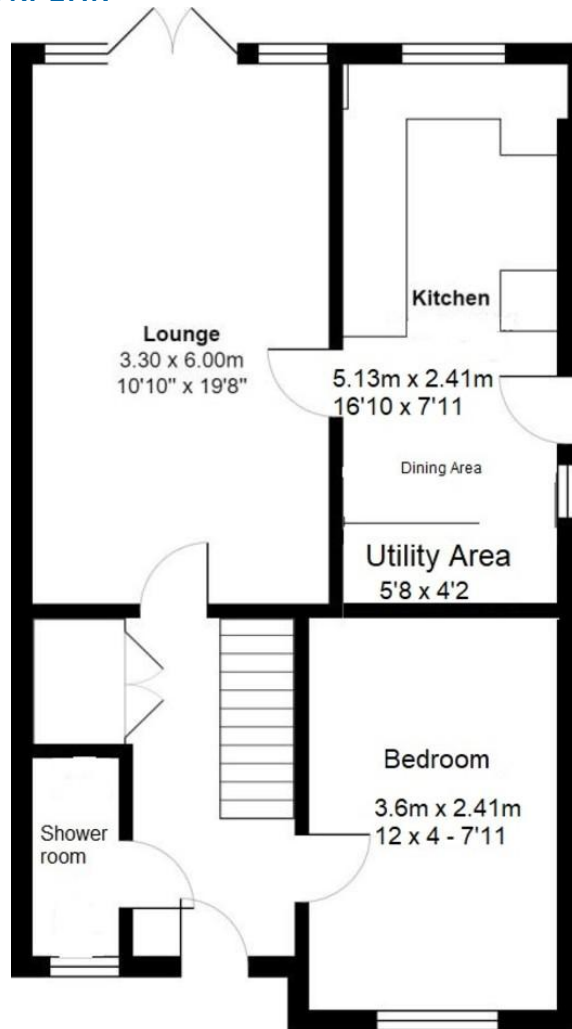
The Willows in Colchester, Essex, is a charming residential area characterised by its tree-lined streets and beautifully maintained homes. Located within a quiet and peaceful neighbourhood, The Willows offers a serene atmosphere for its residents.

With convenient access to nearby parks, schools, and various amenities, this area is perfect for families and individuals seeking a delightful place to settle down.

The community here is vibrant and welcoming, featuring friendly neighbours and a secure environment. Whether you're enjoying a leisurely walk through the picturesque streets or unwinding in your own garden, The Willows creates a lovely setting for everyday life.



## FLOORPLAN



## DIRECTIONS

### CONTACT

1 Church Road  
Tiptree  
Colchester  
Essex  
CO5 0LG

E [info@john-alexander.co.uk](mailto:info@john-alexander.co.uk)

T 01621 814334

[www.john-alexander.co.uk](http://www.john-alexander.co.uk)

Find us on..



**JOHN ALEXANDER**  
ESTATE AGENTS