



JOHN ALEXANDER  
ESTATE AGENTS



JOHN ALEXANDER  
ESTATE AGENTS



## 2 Bedroom Flat located in Tiptree.

Find us on..



JOHN ALEXANDER  
ESTATE AGENTS

# Mynott Court Church Road Tiptree CO5 0UP



2



1



1



B



TBC



Approx  
742 sq  
ft

## FULL DESCRIPTION

### OVERVIEW

We are delighted to offer this large two bedroom flat on Tiptree's main High Street with share of freehold and no onward chain! Featuring good room sizes, balcony and gated resident parking, this first floor apartment has lots to offer

### LIVING ROOM

**16' 5" x 13' 11" (5m x 4.24m)**

Large window to front aspect. Electric storage heater

### KITCHEN

**11' 5" x 9' 6" (3.48m x 2.9m)**

Window to side aspect. Fitted wall and base units, electric oven and hob plus space for fridge freezer and washing machine

### BATHROOM

**6' 8" x 9' 0" (2.03m x 2.74m)**

Window to side aspect, bath, wash basin and WC

### BEDROOM ONE

**14' 4" x 10' 1" (4.37m x 3.07m)**

Large window to front aspect, electric storage heater and set of wardrobes (to remain)

### BEDROOM TWO

**10' 9" x 8' 5" (3.28m x 2.57m)**

Pitched ceiling, window to rear aspect and electric storage heater

### BALCONY

Accesses from porch and overlooking rear courtyard

### PARKING

The block of flats benefits from private resident's parking via a security barrier

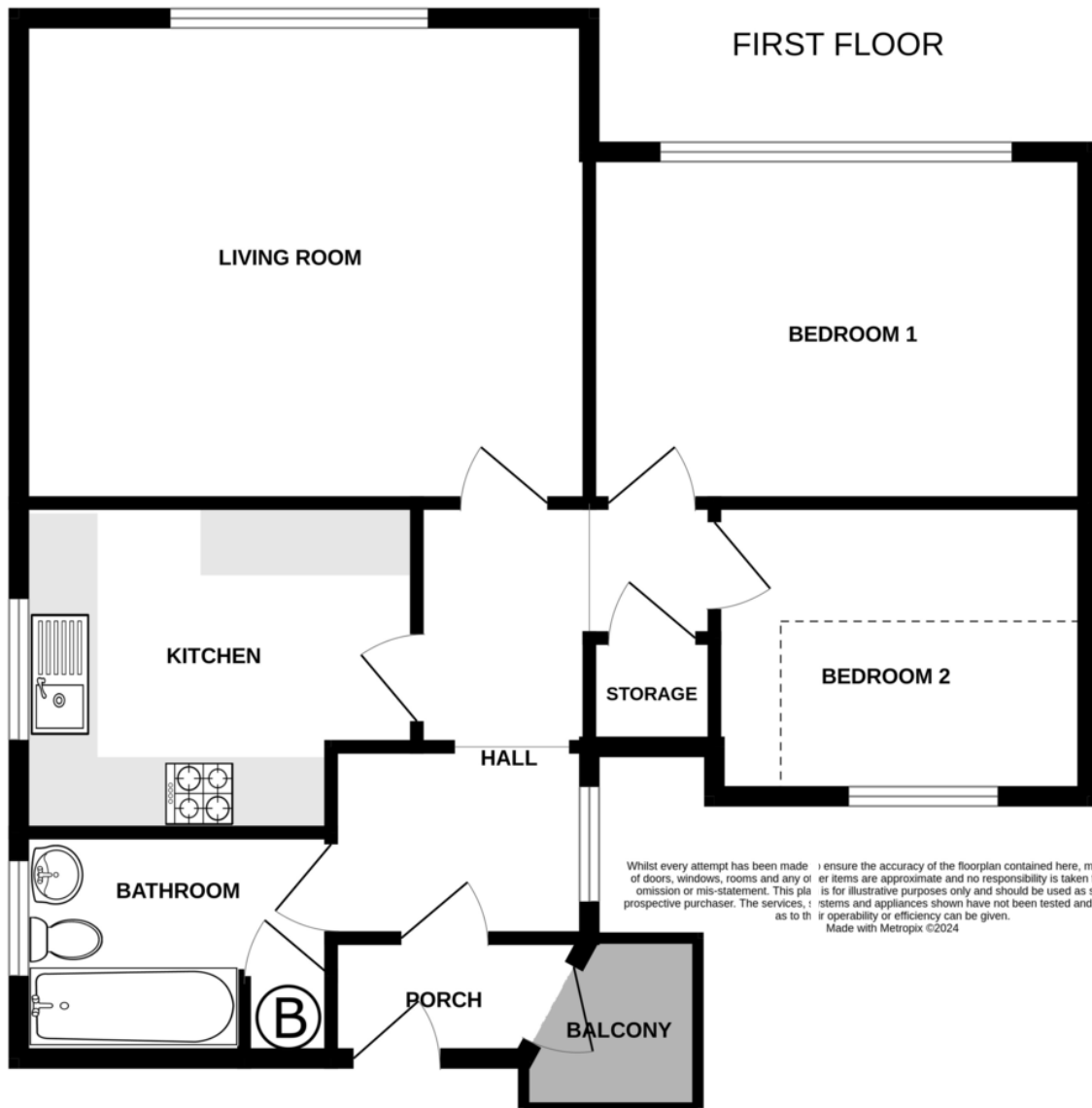
### AGENTS NOTE

The owner informs us that the property includes a share of the freehold with a lease length of approximately 988 years and a service charge of approximately £68/month

# £190,000



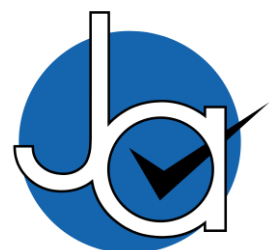
# FLOORPLAN



CONTACT  
1 Church Road  
Tiptree  
Essex  
CO5 0LG

E [info@john-alexander.co.uk](mailto:info@john-alexander.co.uk)  
T 01621 814334 [www.john-alexander.co.uk](http://www.john-alexander.co.uk)

Find us on..



**JOHN ALEXANDER**  
ESTATE AGENTS