



3 Bedroom Detached Bungalow located in Tiptree.

Find us on..



JOHN ALEXANDER
ESTATE AGENTS

New Road Tiptree Colchester CO5 0HJ



3



2



2



EPC

C

FULL DESCRIPTION

OVERVIEW

We are delighted to present this generously proportioned three-bedroom detached bungalow situated in the heart of Tiptree's village centre. The property features a 22ft kitchen breakfast room with a captivating view of a beautifully landscaped garden. Internally, the property boasts three bedrooms, including a master with an en suite, a study, a family bathroom, a lounge, and a sunroom. Ample parking space for multiple cars and a garage complete the property.

HALLWAY

LOUNGE

22' 7" x 12' 8" (6.88m x 3.86m)

KITCHEN/BREAKFAST ROOM

22' 4" x 10' 9" (6.81m x 3.28m)

Built in appliances; dishwasher, washing machine and fridge freezer, granite work tops, boiling water tap, gas hob and double oven.

SUN ROOM

8' 7" x 5' 6" (2.62m x 1.68m)

STUDY

12' 9" x 6' 2" (3.89m x 1.88m)

BEDROOM ONE

12' 6" x 10' 1" (3.81m x 3.07m)

ENSUITE

BEDROOM TWO

10' 1" x 9' 9" (3.07m x 2.97m)

BEDROOM THREE

8' 8" x 10' 2" (2.64m x 3.1m)

FAMILY BATHROOM

REAR GARDEN

Patio area, mainly laid to lawn with shrub and flowers borders, separate vegetable patch and shed to remain.

SINGLE GARAGE

Offers In
Excess Of
£525,000



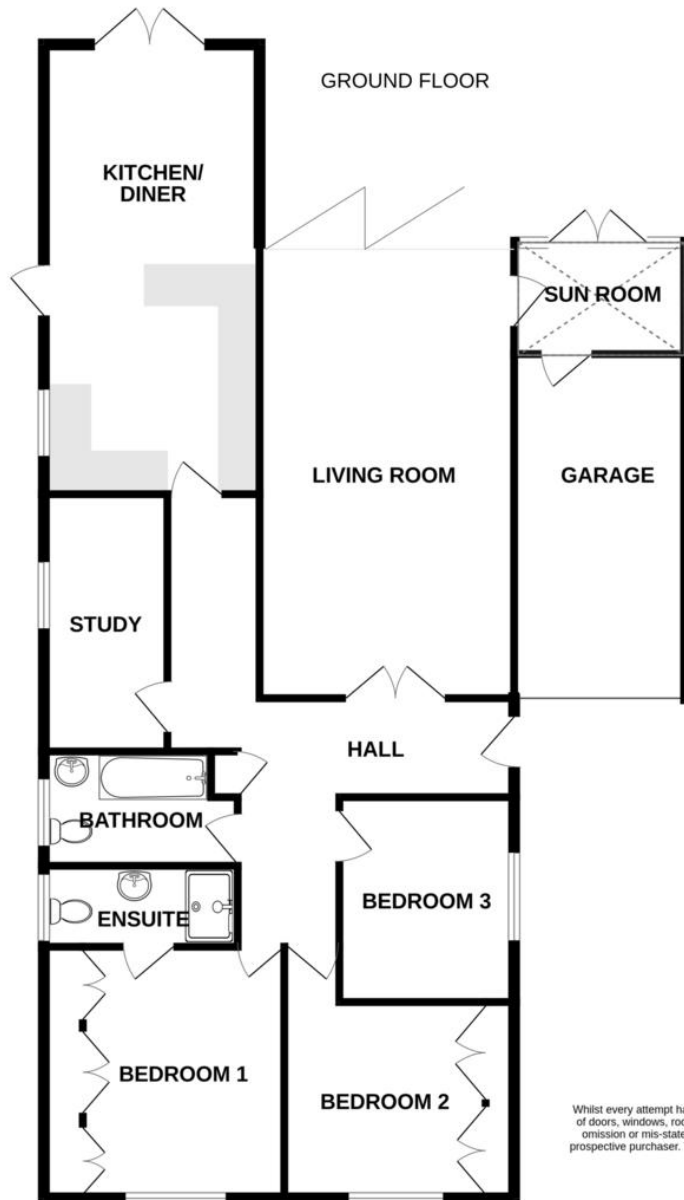




New Road, Tiptree CO5 0HJ



FLOORPLAN



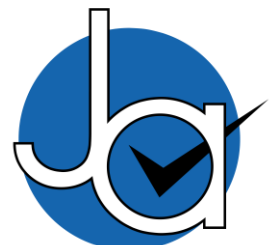
Whilst every attempt has been made to ensure the accuracy of the floorplan contained here, measurements of doors, windows, rooms and any other items are approximate and no responsibility is taken for any error, omission or mis-statement. This plan is for illustrative purposes only and should be used as such by any prospective purchaser. The services, systems and appliances shown have not been tested and no guarantee as to their operability or efficiency can be given.
Made with Metropix ©2024

DIRECTIONS

CONTACT
1 Church Road
Colchester
Tiptree
Essex
CO5 0LG
E info@john-alexander.co.uk

T 01621 814334 www.john-alexander.co.uk

Find us on..



JOHN ALEXANDER
ESTATE AGENTS