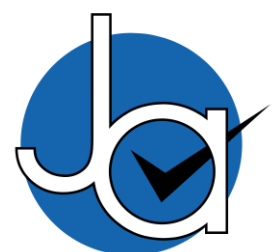




6 Bedroom Detached House located in Tiptree.

Find us on..



JOHN ALEXANDER
ESTATE AGENTS

Oak Road Tiptree Colchester CO5 0NE



6



2



0



TBC



FULL DESCRIPTION

John Alexander are delighted to bring to the market this detached six bedroom family home located in Tiptree. The property features six bedrooms, family bathroom and shower room, kitchen/diner, lounge and separate study. The garden is unoverlooked and low maintenance. Being conveniently located to Baynards primary school and Thurstable Secondary school this makes the perfect family home.

HALLWAY

Radiator, under stairs storage, stairs to first floor.

SHOWER ROOM

Window to front, low level W.C, wash hand basin, shower cubical.

KITCHEN/BREAKFAST ROOM

10' 4" x 17' 11" (3.15m x 5.46m)

Window to front, radiator, matching eye and base units, space for washing machine, range cooker with extractor over, tiled flooring, space for fridge/freezer, downlighters.

LOUNGE

18' 1" x 11' 8" (5.51m x 3.56m)

Window to rear, french doors to garden, fireplace, wall lights, radiator.

STUDY

Window to rear, door to garden, radiator, door to integral garage.

LANDING

Window to side, split landing, loft access.

BEDROOM

9' 8" x 11' 10" (2.95m x 3.61m)

Window to rear, radiator, built in wardrobes.

BEDROOM

8' 11" x 10' 2" (2.72m x 3.1m)

Window to rear, built in wardrobes, radiator.

BEDROOM

11' 5" x 8' 1" (3.48m x 2.46m)

Window to front, built in wardrobes, radiator.

BATHROOM

Window to rear, heated towel rail, two wash hand basin, with storage underneath, low level W.C, jacuzzi style bath.

BEDROOM

8' 2" x 9' 8" (2.49m x 2.95m)

Window to front, radiator.

BEDROOM

6' 11" x 13' (2.11m x 3.96m)

Window to front, radiator.

BEDROOM

Window to rear, radiator.

GARDEN

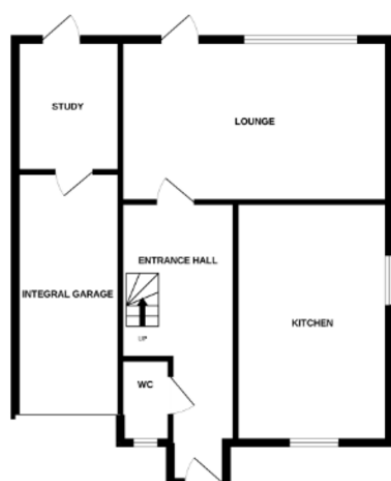
Mainly laid to lawn, small pond, flower borders, side access.

Offers over £500,000

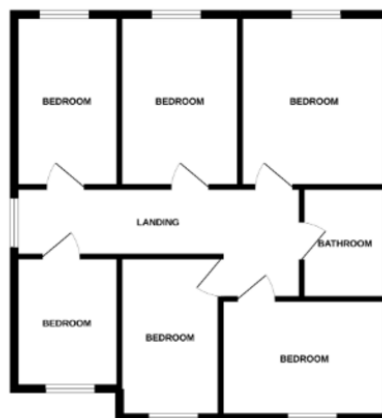


FLOORPLAN

GROUND FLOOR



1ST FLOOR

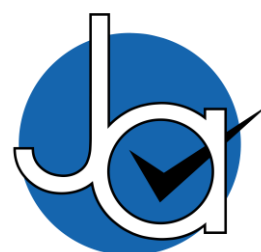


Whilst every attempt has been made to ensure the accuracy of the floorplan contained here, measurements of doors, windows, rooms and any other items are approximate and no responsibility is taken for any error, omission or mis-statement. This plan is for illustrative purposes only and should be used as such by any prospective purchaser. The services, systems and appliances shown have not been tested and no guarantee as to their capability or efficiency can be given.
Made with Metropix 13/12/22

CONTACT
1 Church Road
Colchester
Tiptree
Essex
CO5 0LG
E info@john-alexander.co.uk

T 01621 814334 www.john-alexander.co.uk

Find us on..



JOHN ALEXANDER
ESTATE AGENTS