



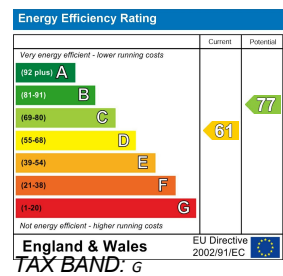
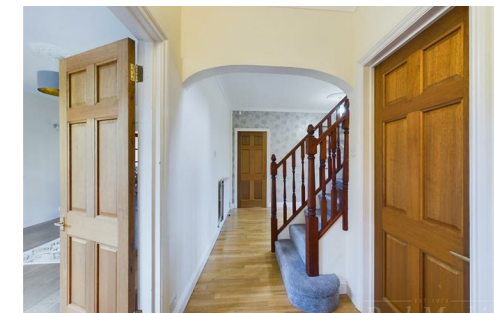
EST 1973  
**Paul Meakin** ESTATE AGENTS  
 Guide Price £775,000 Church Way, South Croydon, CR2 0JR

- Entrance Hall
- Study / Playroom  
8'11" x 7'8" (2.72m x 2.34m)
- Living room  
15'9" x 11'1"
- Downstairs Cloakroom
- Kitchen  
12'8" x 9'1" (3.86m x 2.77m)
- Dining Area  
11'7" x 9'9" (3.53m x 2.97m)
- Snug Area  
9'10" x 8'5" (3.00m x 2.57m)
- Landing
- Bedroom  
15'10" x 11'1" (4.83m x 3.38m)
- En-suite  
7'1" x 6'11" (2.16m x 2.11m)
- Bedroom  
13' x 8'9" (3.96m x 2.67m)
- Bedroom  
9'9" x 7'6" (2.97m x 2.29m)
- Bedroom  
9' x 8'5" (2.74m x 2.57m)
- Bathroom  
7'10" x 5' (2.39m x 1.52m)
- Garage  
15'11" x 9'1" (4.85m x 2.77m)
- Garden
- Driveway



- Chain Free
- Detached
- Views across London Skyline
- Refitted kitchen
- Off street parking
- Four bedroom
- Two bathroom
- Four reception areas
- Garage

A 'Chain Free' Four bedroom extended detached family home offering buyers an abundance of versatile accommodation to create their own perfect home. Situated in a popular residential road within 1/4 of a mile to Sanderstead Village, this home is a must view with families and it boasts far reaching views to the rear across South Croydon and the London skyline, a good selection of local primary and senior schools along with good transport links. Internally offering four reception areas, a downstairs cloakroom, a refitted kitchen, the first floor boasts four good sized bedrooms, en suite to large master bedroom and a refitted family bathroom. A garage is provided along with ample off street parking via the driveway with landscaped front and rear gardens. Your earliest viewing is advised to appreciate the location and size.



Agents Note: Whilst every care has been taken to prepare these sales particulars, they are for guidance purposes only. All measurements are approximate and for general guidance purposes only and whilst every care has been taken to ensure their accuracy, they should not be relied upon and potential buyers are advised to recheck the measurements

