

**New Property, 6a The Holt,
Hemel Hempstead,
Hertfordshire, HP2 4LF**

David
Doyle
Sales and Lettings

Guide price £400,000 Freehold



A BRAND NEW 3-BED FAMILY HOME DESIGNED WITH MODERN LIVING IN MIND. OPEN LOUNGE AND DINING AREA WITH VELUX WINDOWS, BIFOLD DOORS OPENING TO PRIVATE GARDEN. CONTEMPORARY KITCHEN FEATURES INTEGRATED DISHWASHER AND COORDINATED TILED FLOORING. GROUND FLOOR INCLUDES ENTRANCE HALL AND GUEST CLOAKROOM. UPSTAIRS, 3 BEDROOMS AND LUXURY FAMILY BATHROOM. LANDSCAPED REAR GARDEN OFFERS PATIO AND LAWN. ADDITIONAL FEATURES: DOUBLE GLAZING, GAS HEATING, WIDE PLANK WOOD EFFECT FLOORING. PLEASE SEE PHOTOS WHICH SHOW EXTENSIVE PARKING AREA NEARBY - PLEASE NOTE THIS IS NOT OWNED OR ALLOCATED

Hemel Hempstead with its Malls of Riverside and The Marlowes offers a full range of shopping facilities and other amenities. For the commuter the M1 and M25 are close at hand, whilst the mainline railway station offers a fast and frequent service to London Euston.

Brand new 3 bedroom family home

Modern design and stylish living

Spacious open plan lounge and dining room with bi-fold doors

Contemporary high gloss handleless kitchen with integrated dishwasher

Convenient guest cloakroom

Luxuriously fitted family bathroom

Thoughtfully landscaped rear garden with patio seating area and lawn

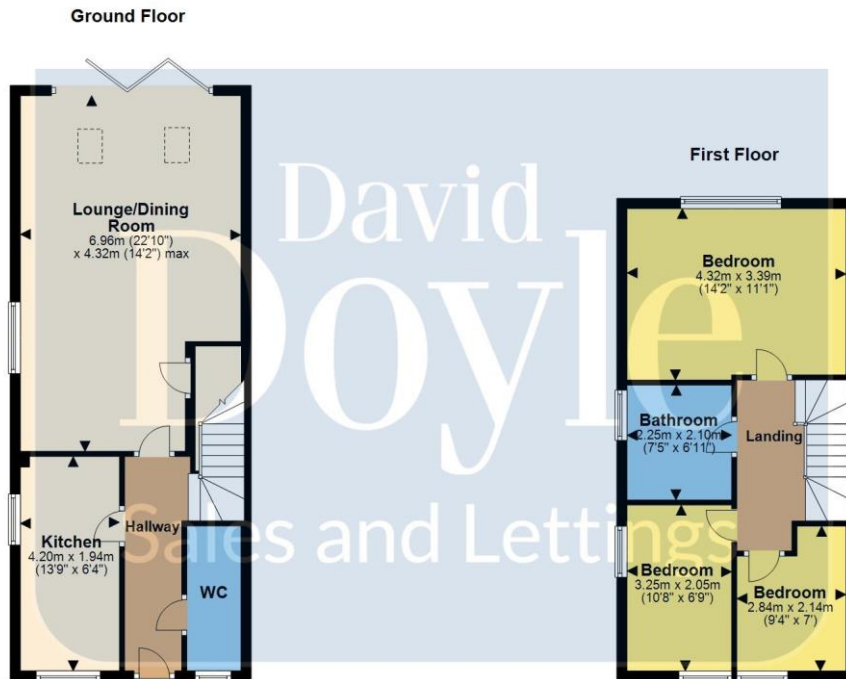
Wide plank wood effect flooring on the ground floor

Carpeting on the first floor

Register your interest NOW

Council Tax To Be Confirmed

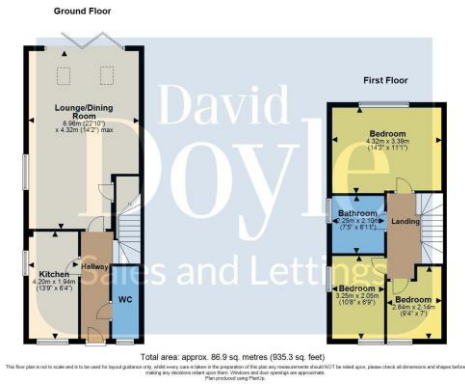
Tenure -Freehold



Total area: approx. 86.9 sq. metres (935.3 sq. feet)

This floor plan is not to scale and is to be used for layout guidance only, whilst every care is taken in the preparation of this plan any measurements should NOT be relied upon, please check all dimensions and shapes before making any decisions reliant upon them. Windows and door openings are approximate.
Plan produced using FloorUp.





CALL 01442 248671 OR EMAIL BOXMOOR@DAVIDDOYLE.CO.UK TO BOOK A VIEWING

David Doyle Estate Agents (DD), for themselves and for the vendors of this property whose agents they are, give notice that: (1) These particulars and floorplans are set out as a general outline only for the guidance of the intending purchasers and do not constitute the whole, nor any part, of an offer or contract. (2) All descriptions, dimensions, floorplan dimensions, references to condition, necessary permissions for use and occupation, and any other details, are given in good faith and are believed to be correct at the date of compilation, but any intending purchasers should not rely on them as statements or representation of fact and must satisfy themselves as to their accuracy. (3) All plant, machinery, equipment, services, fixtures and fittings referred to were present at the date of first inspection, but have not been tested and we give no warranty or representation as to their condition, operation, or fitness for the intended purpose. (4) Any comment on council tax/rateable value, rates payable, and permitted planning use, is given in good faith from information informally supplied to us. Intending purchasers must seek confirmation direct from the relevant Local Authority. (5) No person employed by (DD) has any authority to enter into any contract, nor make or give any warranty or representation whatsoever in relation to this property. (6) (DD) do not hold themselves responsible, in negligence or otherwise, for any loss arising from the use of these particulars, nor for any expense incurred in viewing the premises or for abortive journeys. (7) All prices are exclusive of VAT (unless otherwise stated). Terms quoted are subject to contract. NB. PLEASE NOTE that some developments are subject to management company conditions and charges. Solicitors are to advise of any liability/ies.