

A photograph of a modern bedroom. A double bed with a grey quilted duvet and a grey headboard is the central feature. The bed is flanked by two white bedside tables, each with a lamp. The wall behind the bed is covered in yellow patterned wallpaper. To the left, two framed abstract paintings hang on a white wall. To the right, a window with white shutters is visible above a white radiator. A blue circular graphic in the top right corner contains the text 'The Portland' and '2 bedroom home'.

The Portland

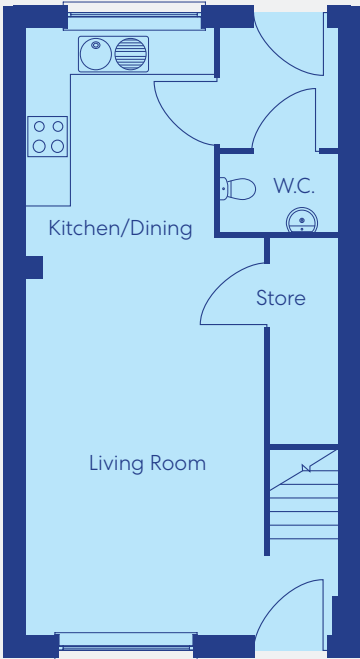
2 bedroom home

karbon
homes

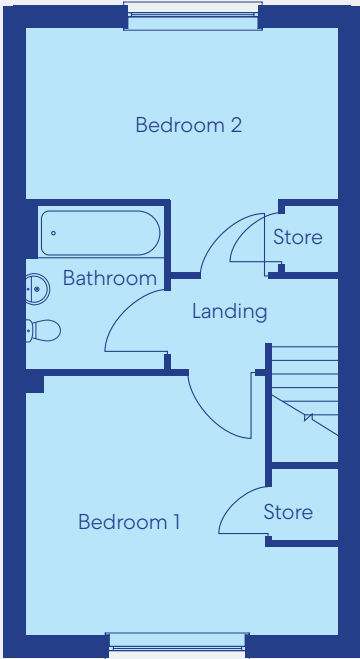
For more information please contact us on:
salesandmarketing@karbonhomes.co.uk / 0191 223 8749

The Portland is a two-bedroom home which benefits from an open plan living space which includes a modern kitchen and spacious living room. There is also a handy storage cupboard and downstairs W.C.

To the first floor, there is a spacious master bedroom, as well as a second bedroom and family bathroom. Externally there is private parking and a rear garden.



Ground floor
Living Room 15'8' x 13'9'
Kitchen/Dining 10'10' x 8'4'
W.C. 5'1' x 3'5'



First floor
Bedroom 1 13'9' x 11'3'
Bedroom 2 13'9' x 10'5'
Bathroom 7'4' x 5'10'