

The Denmark

3 bedroom semi/detached home

karbon
homes

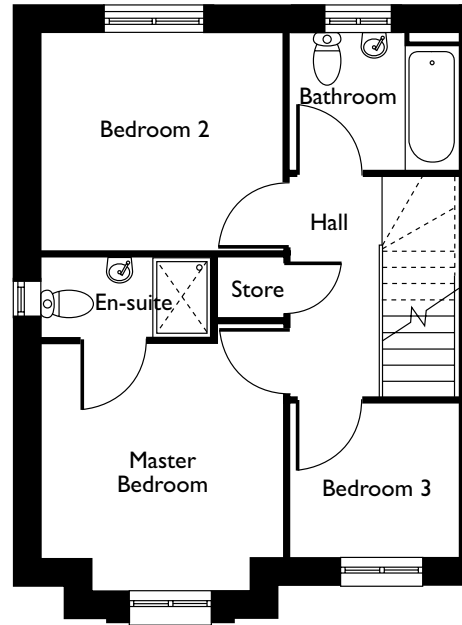
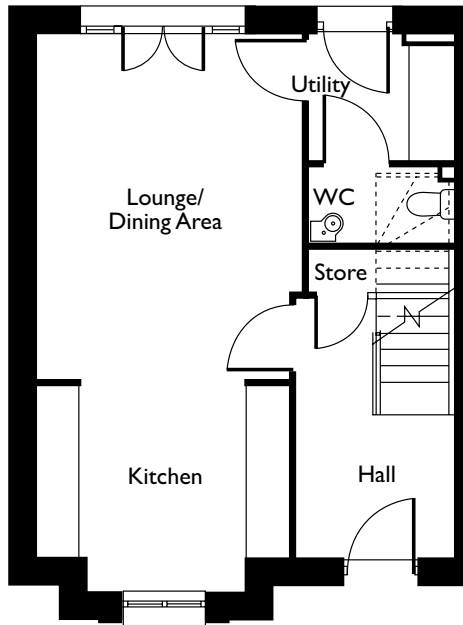


The Denmark

3 bedroom semi/detached home

This spacious three bedroom home is perfect for couples and young families alike. It features an open plan kitchen with lounge/dining area leading through French doors to the rear garden as well as a handy utility room downstairs.

Upstairs features two double bedrooms, one with an en-suite shower room, a further bedroom and a family bathroom.



Ground Floor

Kitchen	2.3m x 3.5m	7'9" x 11'5"
Lounge/Dining Area	4.7m x 3.6m	15'7" x 12'0"
WC	1.0m x 1.9m	3'3" x 6'5"

First Floor

Master Bedroom	3.3m x 3.3m	10'1" x 11'1"
En-suite	2.3m x 1.1m	7'8" x 3'7"
Bedroom 2	3.3m x 3.0m	10'11" x 9'10"
Bedroom 3	2.1m x 2.3m	6'11" x 7'9"
Bathroom	2.3m x 1.8m	7'9" x 6'2"