



1

Sunningdale Place, Helensburgh, Argyll And Bute. G84 7JB





1

Sunningdale Place, Helensburgh, Argyll And Bute. G84 7JB



Built in the early 2000's by renowned builder Turnberry Homes, 1 Sunningdale Place is an outstanding two-bedroom ground floor apartment that has the advantage of its own private entrance and allocated parking space.

Rarely available within the development and one of only four having its own private entrance the apartment itself offers around 1,000 square feet of living space all of which is beautifully presented.

On entering there is a vast entrance hallway which has a useful store cupboard. The lounge is a fabulous size at over twenty feet in length and has a wonderful view over Colgrain Bowling Club from the Juliette balcony. The apartment has a superb kitchen/diner which is fitted with modern units and worktops. There is a range of integral appliances and ample space for a dining table and chairs.

The apartment has two excellent proportioned double bedrooms. The main bedroom has the luxury of an En-suite shower room and walk-in wardrobe with the second bedroom also having a built-in wardrobe. Completing the internal accommodation is a lovely shower room with large enclosure. The apartment is double glazed throughout and has gas central heating with the boiler having been replaced in June 2024.

Externally Sunningdale Place sits within well maintained grounds with a factor in place for general maintenance including the buildings insurance. Apartment 1 enjoys an allocated parking space with additional visitor parking available.

EPC Band C
Council Tax Band E



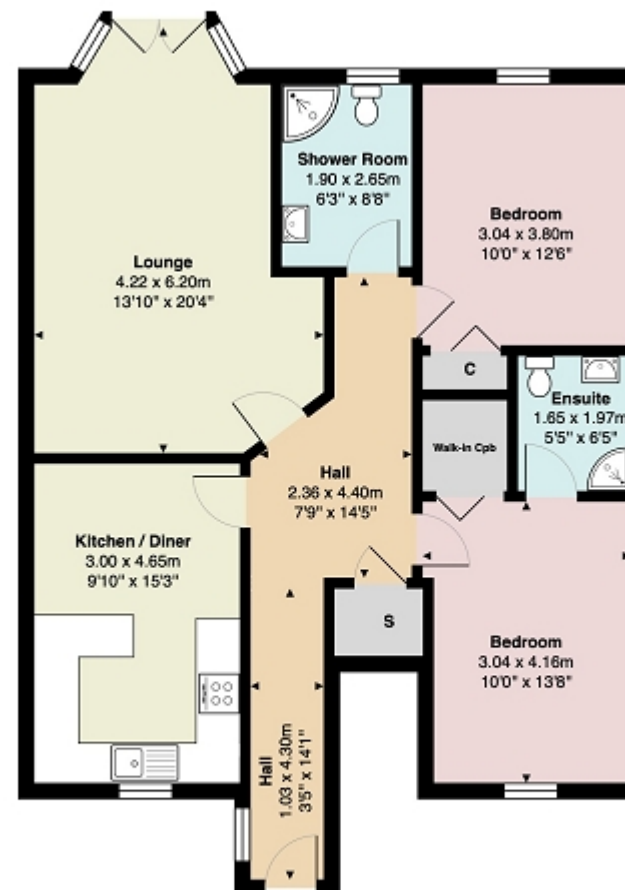
1
Sunningdale Place, Helensburgh, Argyll And Bute. G84 7JB





Measurements

Entrance Hall	14' 01" x 3' 05" or 4.29m x 1.04m
Hallway	14' 05" Max x 7' 09" Max or 4.39m Max x 2.36m Max
Lounge	20' 04" Max x 13' 10" Max or 6.20m Max x 4.22m Max
Kitchen/Diner	15' 03" x 9' 10" or 4.65m x 3.00m
Bedroom 1	13' 08" x 10' 0" or 4.17m x 3.05m
En Suite	6' 05" x 5' 05" or 1.96m x 1.65m
Bedroom 2	12' 06" x 10' 0" or 3.81m x 3.05m
Shower Room	8' 08" x 6' 03" or 2.64m x 1.91m



Contact our office for further details



rightmove
find your happy

NOTE: These details have been prepared for guidance. If there is any point which you find misleading please contact McArthur Stanton where further information is available. Measurements have been taken from wall to wall, unless otherwise stated, and have been recorded by use of a sonic beam. Services and appliances not tested. Details have been prepared by January 2026. If required, we can arrange for a property market appraisal to be carried out on your existing property.

1

Sunningdale Place, Helensburgh, Argyll And Bute. G84 7JB

