



7

Honeysuckle Court , 68a East King Street, Helensburgh, Argyll And Bute. G84 7QY





7

Honeysuckle Court , 68a East King Street, Helensburgh, Argyll And Bute. G84 7QY



Located on East King Street, Honeysuckle Court is a beautiful modern development of luxury apartments with number 7 having the advantage of a private allocated parking space.

Positioned on the top floor of the building apartment 7 has been beautifully maintained and enjoys views towards the Clyde Estuary from the rear of the apartment. Access to the building itself is via a secure door entry system, the communal staircase is bright and airy and is well decorated. On entering the apartment there is a welcoming hallway which has a useful store cupboard. The main living space is on an open plan basis and has ample room for a lovely sitting area and a dining space which can accommodate a good-sized table and chairs. The kitchen is modern in design which includes a range of good quality integral appliances, excellent storage and a Juliet balcony. There is also a breakfast bar ideal for informal dining. The apartment has two well-proportioned double bedrooms. The main bedroom has the luxury of an en-suite shower room and both have built in mirrored wardrobes. In addition, there is a modern bathroom. The apartment has high performance double-glazed windows and gas central heating.

Externally the development has resident's grounds and picnic area, ideal for using in the summer months. As mentioned, apartment 7 has the advantage of a private allocated parking space. Honeysuckle Court is ideally positioned on the lower East side of Helensburgh with the town centre being accessible by foot or a short car journey.

EPC Band C
Council Tax Band D



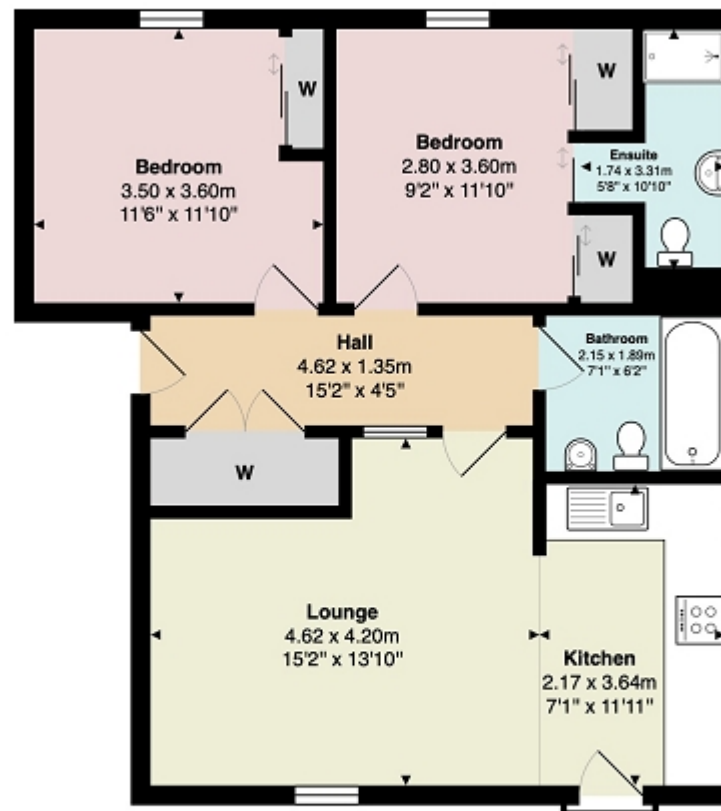
7
Honeysuckle Court , 68a East King Street, Helensburgh, Argyll And Bute. G84 7QY





Measurements

Hallway	15' 02" x 4' 05" or 4.62m x 1.35m
Lounge	15' 02" Max x 13' 10" Max or 4.62m Max x 4.22m Max
Kitchen	11' 11" x 7' 01" or 3.63m x 2.16m
Bedroom 1	11' 10" x 9' 02" or 3.61m x 2.79m
En Suite	10' 10" x 5' 08" Max Max or 3.30m x 1.73m Max
Bedroom 2	11' 10" Max x 11' 06" Max or 3.61m Max x 3.51m Max
Bathroom	7' 01" x 6' 02" or 2.16m x 1.88m



Contact our office for further details



rightmove
find your happy

All measurements are approximate and for display purposes only
NOTE: These details have been prepared for guidance. If there is any point which you find misleading please contact McArthur Stanton where further information is available. Measurements have been taken from wall to wall, unless otherwise stated, and have been recorded by use of a sonic beam. Services and appliances not tested. Details have been prepared by August 2025. If required, we can arrange for a property market appraisal to be carried out on your existing property.

7

Honeysuckle Court , 68a East King Street, Helensburgh, Argyll And Bute. G84 7QY

