



26

Kings Court , 89 West King Street, Helensburgh, Argyll And Bute. G84 8EF





26

Kings Court , 89 West King Street, Helensburgh, Argyll And Bute. G84 8EF



Built by McCarthy Stone in the mid 1990's, Kings Court remains one of Helensburgh's most sought-after retirement developments with Flat 26 being one of only a handful of two-bedroom apartments available.

The development itself is meticulously maintained and offers lovely communal gardens to enjoy in the summer months. Flat 26 is positioned on the second floor of the building which has lift access to all floors. Internally the flat is one of the largest available at around 750 square feet. On entering there is a welcoming hallway which has a useful store cupboard. The Lounge is a superb size and has ample space for a dining table and chairs if required. The kitchen is accessed from the Lounge and has been replaced in recent times with modern gloss units and worktops. There is a range of integral appliances and space for a free-standing fridge/freezer. There are two large double bedrooms, the main bedroom has the luxury of En-suite facilities and built in wardrobes and there is an additional shower room accessed from the hallway. Both the En-suite and shower room have been replaced recently. The flat has double glazed windows and electric heating.

Kings Court has the advantage of a Resident's Lounge on the ground floor, laundry facilities and a guest suite that can be booked for visiting guests. There is a lift servicing all floors and a secure door entry system for access to the building. Externally as mentioned there are beautifully maintained gardens and parking is available upon request.

EPC Band C
Council Tax Band E



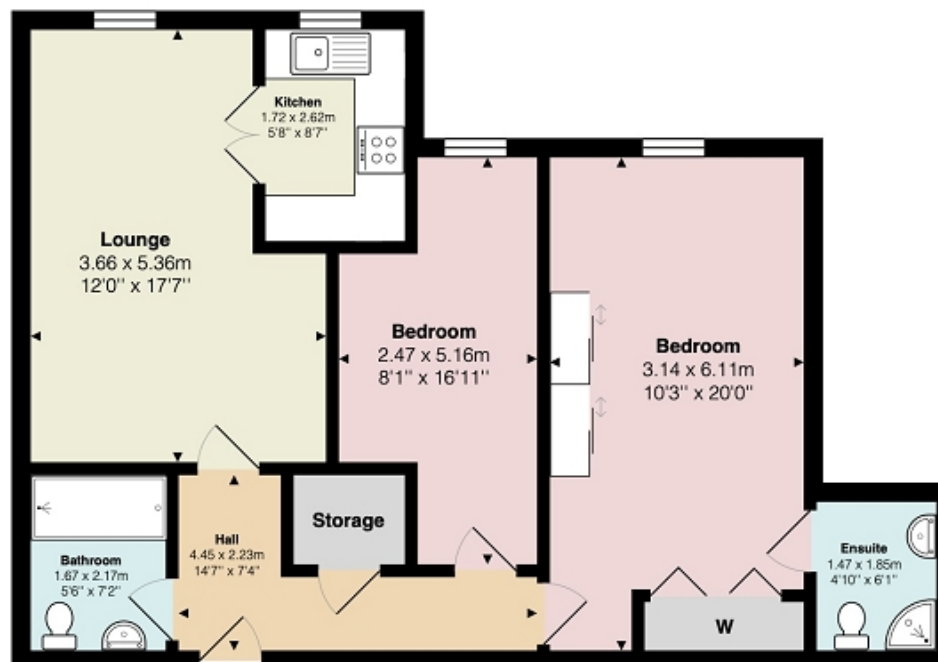
26
Kings Court , 89 West King Street, Helensburgh, Argyll And Bute. G84 8EF





Measurements

Hallway	14' 07" Max x 7' 04" Max or 4.45m Max x 2.24m Max
Lounge	17' 07" Max x 12' 0" Max or 5.36m Max x 3.66m Max
Kitchen	8' 07" x 5' 08" or 2.62m x 1.73m
Bedroom 1	20' 0" Max x 10' 03" Max or 6.10m Max x 3.12m Max
En Suite	6' 01" x 4' 10" or 1.85m x 1.47m
Bedroom 2	16' 11" Max x 8' 01" Max or 5.16m Max x 2.46m Max
Bathroom	7' 02" x 5' 06" or 2.18m x 1.68m



All measurements are approximate and for display purposes only

Contact our office for further details



rightmove
find your happy

NOTE: These details have been prepared for guidance. If there is any point which you find misleading please contact McArthur Stanton where further information is available. Measurements have been taken from wall to wall, unless otherwise stated, and have been recorded by use of a sonic beam. Services and appliances not tested. Details have been prepared by August 2024. If required, we can arrange for a property market appraisal to be carried out on your existing property.

26

Kings Court , 89 West King Street, Helensburgh, Argyll And Bute. G84 8EF

