



3

Honeysuckle Court , 68A East King Street, Helensburgh, Argyll And Bute. G84 7QY





3

Honeysuckle Court , 68A East King Street, Helensburgh, Argyll And Bute. G84 7QY



Located on East King Street, Honeysuckle Court is a beautiful modern development of luxury apartments with number 3 having the advantage of a covered allocated parking space.

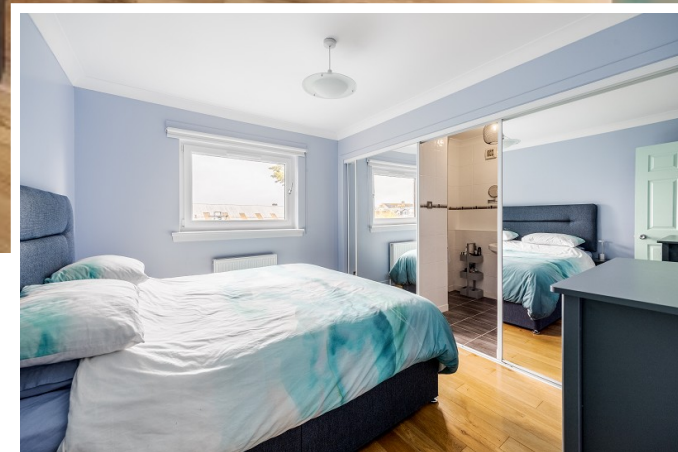
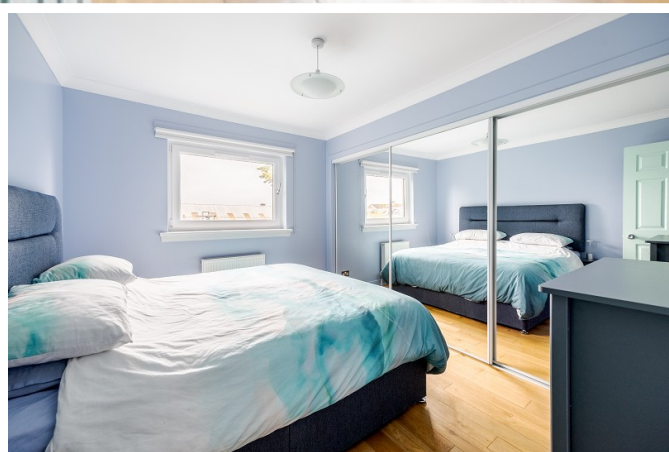
Positioned on the preferred first floor of the building apartment 3 has been beautifully maintained and upgraded by the current owners. Access to the building itself is via a secure door entry system, the communal staircase is bright and airy and is well decorated. On entering the apartment there is a welcoming hallway which has a useful store cupboard. The main living space is on an open plan basis and has ample room for a lovely sitting area and a dining space which can accommodate a good-sized table and chairs. The kitchen is modern in design with white gloss units which include a range of good quality integral appliances, excellent storage and a Juliet balcony. The apartment has two well-proportioned double bedrooms. The main bedroom has the luxury of an en-suite shower room and both have built in mirrored wardrobes. In addition, there is a modern bathroom. The apartment has high performance double-glazed windows and gas central heating.

Externally the development is beautifully maintained with an active resident's association in place for general maintenance including buildings insurance. As mentioned apartment 3 has the advantage of a covered private allocated parking space. Ideally positioned in the lower East side of Helensburgh the town centre can be reached easily by foot or a short car journey.

EPC Band C
Council Tax Band D



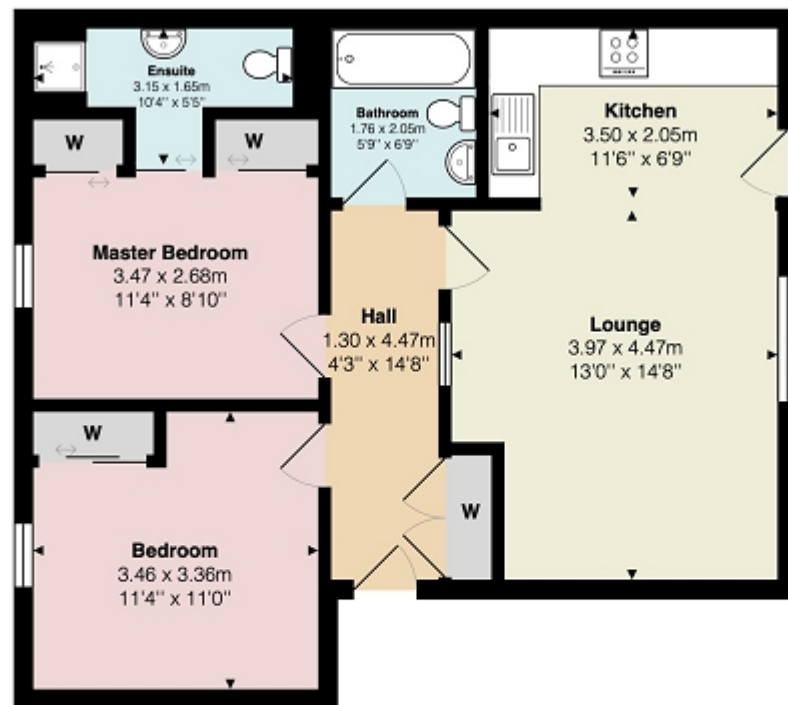
3
Honeysuckle Court , 68A East King Street, Helensburgh, Argyll And Bute. G84 7QY





Measurements

Hallway	14' 08" x 4' 03" or 4.47m x 1.30m
Lounge	14' 08" Max x 13' 0" Max or 4.47m Max x 3.96m Max
Kitchen	11' 06" x 6' 09" or 3.51m x 2.06m
Bedroom 1	11' 04" x 8' 10" or 3.45m x 2.69m
En Suite	10' 04" Max x 5' 05" Max or 3.15m Max x 1.65m Max
Bedroom 2	11' 04" Max x 11' 0" Max or 3.45m Max x 3.35m Max
Bathroom	6' 09" x 5' 09" or 2.06m x 1.75m



Contact our office for further details



rightmove
find your happy

All measurements are approximate and for display purposes only

NOTE: These details have been prepared for guidance. If there is any point which you find misleading please contact McArthur Stanton where further information is available. Measurements have been taken from wall to wall, unless otherwise stated, and have been recorded by use of a sonic beam. Services and appliances not tested. Details have been prepared by July 2024. If required, we can arrange for a property market appraisal to be carried out on your existing property.

3

Honeysuckle Court , 68A East King Street, Helensburgh, Argyll And Bute. G84 7QY

